

*tavistockbow*

**For Rent**



**People Make Places**



**St. Martin's Lane, Covent Garden WC2**

2 bedrooms | 1,270 sq ft

£1,475 pw





With double height apex ceiling and exposed beams creating a lofty feel, this two bedroom penthouse has a contemporary interior and a private roof terrace. Dark grey shutters and feature lighting add to the overall design, along with a stylish kitchen and bathrooms. Available unfurnished April.

#### What you need to know

- Two double bedrooms
- Two bathrooms
- Underfloor heating
- Wood floors throughout
- Modern kitchen
- Unfurnished
- Available April
- Private roof terrace
- 4th floor with lift access
- Seconds from Leicester square tube (Northern line)



**St. Martin's Lane, Covent Garden WC2**





### Overview

Laterally designed with the two double bedrooms at the opposite end providing ideal privacy, this penthouse is designed around its vast living space. Featuring double height ceilings framed by an apex roof and exposed beams, the space has plenty of space to entertain and to create a division between dining and living.

A smart galley-style kitchen with double oven is positioned off the living area with a small utility cupboard. Both bedrooms have ensuite facilities with marble effect tiling, one with a double shower and the other with a bath, while a set of stairs lead up to a private roof terrace with stunning rooftop views across the West End.

Underfloor heating and efficient double glazing are fitted for tenant comfort.





St Martin's Lane is in the heart of Theatreland and conveniently located for easy travel within London. Underground services can be accessed via Leicester Square (Northern and Piccadilly Lines) less than a minute's walk away, while Charing Cross (Bakerloo and Northern lines as well as mainline services) and Tottenham Court Road (Central, Northern and Elizabeth lines) are within a short walk. The restaurants and boutiques of Soho, Covent Garden and Seven Dials are also easily reached on foot.

The apartment is available from April on an unfurnished basis. Subject to contract and satisfactory references, the landlord offers a one to three-year lease with a mutual rolling six-month break clause. Westminster Council tax band: H.



**St. Martin's Lane, Covent Garden WC2**





# People Make Places

London is a collection of inspiring urban villages and one of the most exciting places in the world to live, work & play.

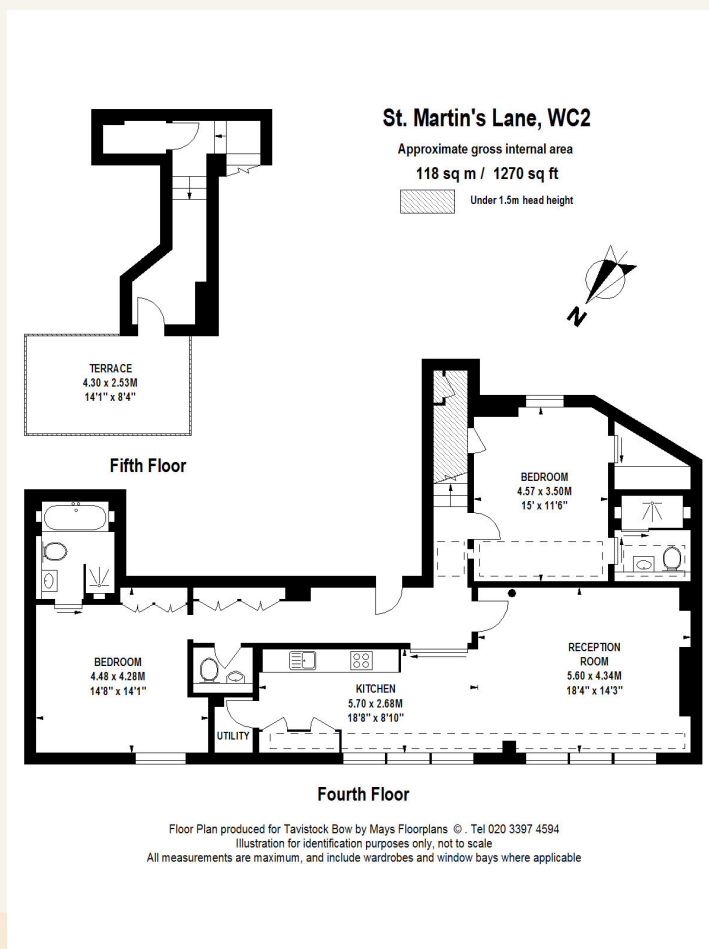
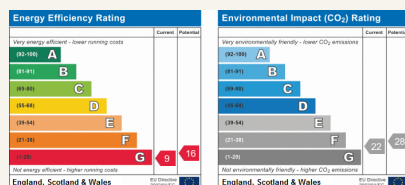
We work with both property owners and their occupiers, sharing the story of these vibrant neighbourhoods, conveying the unique soul & energy to future custodians, the people who'll keep them buzzing.

And unlike many real estate businesses we're not just about buildings, because streets & buildings don't make a neighbourhood.

We're about building relationships, because **people make places**.

MISINTERPRETATION ACT (COPYRIGHT) DISCLAIMER: Tavistock Bow Ltd for themselves and for the vendor(s) of this property whose agents they are, given notice that: 1. These particulars do not constitute, nor constitute any part of, an offer or contract. 2. None of the statements contained in these particulars as to the property are to be relied on as statements or representations of fact. 3. Any intending purchaser or lessee must satisfy themselves by inspection or otherwise as to the correctness of each of the statements contained in these particulars. 4. The vendor(s) or lessor(s) do not make or give and neither Tavistock Bow Ltd nor any person in their employment has any authority to make or give any representation or warranty whatever in relation to this property. Finance Act 1989, Unless otherwise stated all prices and rents are quote exclusive of VAT. Property Misrepresentation Act 1991; These details are believed to be correct at the time of compilation but may be subject to subsequent amendment.

Follow us: [x](#) [f](#) [@](#) [in](#) @tavistockbow



**tavistockbow**

21 New Row, Covent Garden,  
London, WC2N 4LE

t: 020 7477 2177  
e: hello@tavistockbow.com  
w: tavistockbow.com

**St. Martin's Lane, Covent Garden WC2**

