

For Rent

People Make Places



Rupert Street, Chinatown W1

2 bedrooms | 581 sq ft

£710 pw

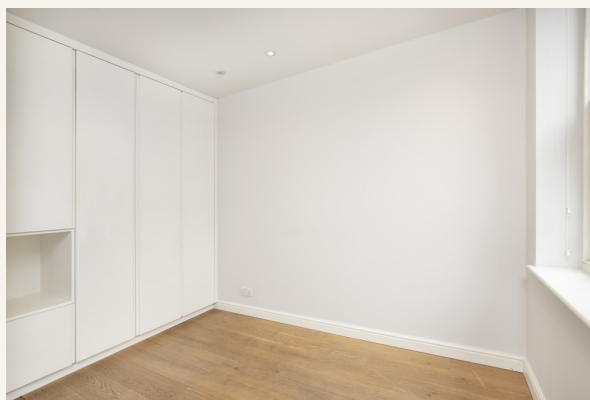




Finished to a modern aesthetic with a stylish bathroom and light grey units in the galley kitchen, this two double bedroom apartment also has a pitched ceiling in the living space adding to its charm. On the second floor, walk-up, of a period building in Chinatown. Available June unfurnished.

What you need to know

- Two bedrooms
- One bathroom
- Second floor (walk-up)
- Separate kitchen
- Triple glazing
- Unfurnished
- Fitted wardrobes
- Dishwasher
- Available June
- Close to Leicester Square tube station



Rupert Street, Chinatown W1



Overview

Suited to two sharers due to the bedrooms of an equal size that also benefit from not being next to one another for privacy purposes, this two bedroom apartment is located on the second floor, walk-up, of a period building in Chinatown. There is a smart galley kitchen with light grey units, a separate living space and stylish bathroom with white square tiles set off with dark grey grout. Both bedrooms have useful fitted storage and wooden floors feature throughout.

From dim sum delights and hidden tea houses to the lively bars and clubs of Lisle Street, Chinatown offers a genuine taste of the Far East in the centre of our cosmopolitan city, where heritage and culture combine to create a sensory escape that has long been woven into London's rich and diverse tapestry. Transport links are accessible at Piccadilly Circus (Bakerloo and Piccadilly Lines) and Charing Cross mainline which offers train services out of London. Bus routes operate from Shaftesbury Avenue and Regents Street, while Covent Garden, Mayfair, St James's and Soho are all within walking distance.

The apartment is available in June on an unfurnished basis. Subject to contract and satisfactory references, the landlord offers a three-year lease with a mutual rolling six-month break clause. Westminster Council tax band: E.

Rupert Street, Chinatown W1



People Make Places



London is a collection of inspiring urban villages and one of the most exciting places in the world to live, work & play.

We work with both property owners and their occupiers, sharing the story of these vibrant neighbourhoods, conveying the unique soul & energy to future custodians, the people who'll keep them buzzing.

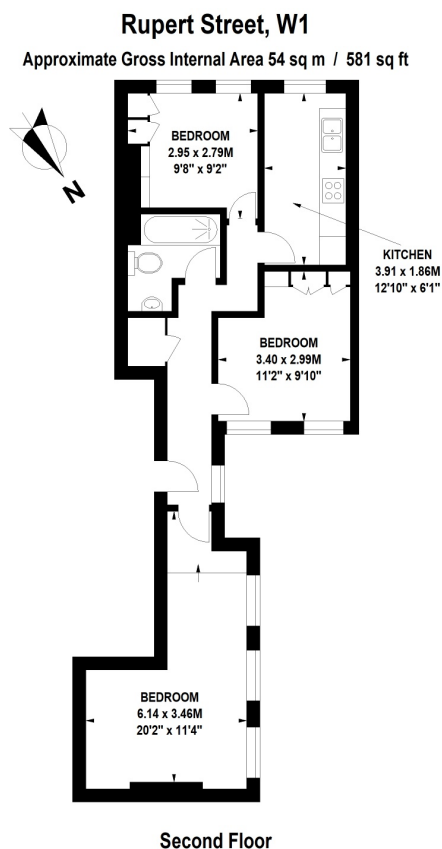
And unlike many real estate businesses we're not just about buildings, because streets & buildings don't make a neighbourhood.

We're about building relationships, because **people make places**.

MISINTERPRETATION ACT (COPYRIGHT) DISCLAIMER: Tavistock Bow Ltd for themselves and for the vendor(s) of this property whose agents they are, given notice that: 1. These particulars do not constitute, nor constitute any part of, an offer or contract. 2. None of the statements contained in these particulars as to the property are to be relied on as statements or representations of fact. 3. Any intending purchaser or lessee must satisfy themselves by inspection or otherwise as to the correctness of each of the statements contained in these particulars. 4. The vendor(s) or lessor(s) do not make or give and neither Tavistock Bow Ltd nor any person in their employment has any authority to make or give any representation or warranty whatever in relation to this property. Finance Act 1989, Unless otherwise stated all prices and rents are quote exclusive of VAT. Property Misrepresentation Act 1991; These details are believed to be correct at the time of compilation but may be subject to subsequent amendment.

Follow us:     @tavistockbow

Score	Energy rating	Current	Potential
92+	A		
81-91	B		
69-80	C		75 C
55-68	D		
39-54	E	51 E	
21-38	F		
1-20	G		



Floor Plan produced for Tavistock Bow by Mays Floorplans © . Tel 020 3397 4594
Illustration for identification purposes only, not to scale
All measurements are maximum, and include wardrobes and window bays where applicable

tavistockbow

21 New Row, Covent Garden,
London, WC2N 4LE

t: 020 7477 2177
e: hello@tavistockbow.com
w: tavistockbow.com



Rupert Street, Chinatown W1