

*tavistockbow*

**For Rent**



**People Make Places**



**Lexington Street, Soho W1**

Studio | 355 sq ft

£500 pw





A stylish studio on the borders of Carnaby and Soho within easy reach of Oxford Circus tube and the foodies' paradise of Kingly Court. Positioned on the second floor and with a modern open plan kitchen and contemporary shower room. Available late July on an unfurnished basis.

#### What you need to know

- Studio apartment
- Shower room
- First Floor
- Wood floors throughout
- Recently refurbished
- Unfurnished
- Modern open plan kitchen
- Professionally managed with 24-hour security close by
- Available July
- Close to Oxford Circus & Piccadilly tube



**Lexington Street, Soho W1**



## Overview

This studio apartment is on the first floor, walk-up, of a popular building on the borders of vibrant Soho and Carnaby, both renowned for their mix of independent and global brands across their retail and restaurant offerings. Finished with a modern aesthetic with wooden floors, a smart grey kitchen and neutrally decorated shower room, the studio has an open plan living space that is flooded in natural light. There is useful fitted storage.

Lexington Street lies on the border of Soho and Carnaby, which plays host to international and independent brands across its retail and restaurant outlets. Green space can be found at nearby Golden Square while there are several transport links within a short walk away including underground services at Oxford Circus (Central, Bakerloo and Victoria Lines) and Tottenham Court Road (Central, Elizabeth and Northern Lines) Underground Stations. Bus routes operate from nearby Oxford and Regents Streets while many central London neighbourhoods are easily on foot.

The apartment is available in July on an unfurnished basis. Subject to contract and satisfactory references, the landlord offers a three-year lease with a mutual rolling six-month break clause.



**Lexington Street, Soho W1**

# People Make Places



London is a collection of inspiring urban villages and one of the most exciting places in the world to live, work & play.

We work with both property owners and their occupiers, sharing the story of these vibrant neighbourhoods, conveying the unique soul & energy to future custodians, the people who'll keep them buzzing.

And unlike many real estate businesses we're not just about buildings, because streets & buildings don't make a neighbourhood.

We're about building relationships, because **people make places**.

MISINTERPRETATION ACT (COPYRIGHT) DISCLAIMER: Tavistock Bow Ltd for themselves and for the vendor(s) of this property whose agents they are, given notice that: 1. These particulars do not constitute, not constitute any part of, an offer or contract. 2. None of the statements contained in these particulars as to the property are to be relied on as statements or representations of fact. 3. Any intending purchaser or lessee must satisfy themselves by inspection or otherwise as to the correctness of each of the statements contained in these particulars. 4. The vendor(s) or lessor(s) do not make or give and neither Tavistock Bow Ltd nor any person in their employment has any authority to make or give any representation or warranty whatever in relation to this property. Finance Act 1989, Unless otherwise stated all prices and rents are quote exclusive of VAT. Property Misrepresentation Act 1991; These details are believed to be correct at the time of compilation but may be subject to subsequent amendment.

Follow us:     @tavistockbow

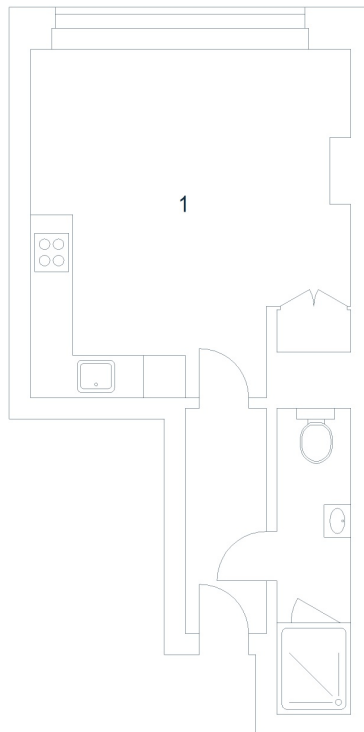
Score	Energy rating	Current	Potential
92+	A		
81-91	B		
69-80	C		80 C
55-68	D	64 D	
39-54	E		
21-38	F		
1-20	G		

Lexington Street, W1

Approximate Gross Internal Area 33 sq m / 355 sq ft

First Floor

1 Studio  
4.97 x 4.57M  
16'3" x 15'



Floor Plan produced for Tavistock Bow by Mays Floorplans © . Tel 020 3397 4594  
Illustration for identification purposes only, not to scale.

**tavistockbow**

21 New Row, Covent Garden,  
London, WC2N 4LE

t: 020 7477 2177  
e: [hello@tavistockbow.com](mailto:hello@tavistockbow.com)  
w: [tavistockbow.com](http://tavistockbow.com)



**Lexington Street, Soho W1**