

tavistockbow

For Rent



People Make Places



King Street, Covent Garden WC2

1 bedroom | 538 sq ft

£850 pw





With tasteful and modern decor throughout, this one-bedroom apartment has beautiful characteristics including a feature fireplace. There is an open-plan kitchen and the bedroom positioned at the rear with pretty views over the tranquillity of St Paul's Church Gardens. Available furnished June.

What you need to know

- One bedroom
- One shower room
- 1st floor
- Open plan kitchen reception room
- Beautiful feature fireplace
- Furnished
- Photos indicative of another in the building
- Comfort cooling
- Available June
- Close to Covent Garden tube



King Street, Covent Garden WC2



Overview

Positioned just off the Piazza, this stunning apartment is situated on the first floor of a period building on King Street (walk-up), which is renowned for its choice of boutiques and restaurants. Contemporary and comfort are paramount in the apartment's overall aesthetic with luxury furnishings and comfort cooling. The double bedroom also boasts a quiet sleeping environment due to its location at the back of the apartment.

Residential occupiers on the Estate benefit from a complimentary membership of Covent Garden Lifestyle Services, helping take the stress out of everyday life. A weekly digital magazine features all the latest news and updates on the estate as lockdown measures begin to ease and a dedicated lifestyle manager is on hand to advise on anything from regular cleaning and fresh flowers, to the best online fitness instructors, personal chefs and nutritionists as well as booking tables at London's top restaurants.

The apartment is available in June on a furnished basis. Subject to contract and satisfactory references, the landlord offers a one to three-year lease with a mutual six-month break clause. Westminster City Council tax band: F.



King Street, Covent Garden WC2

People Make Places

London is a collection of inspiring urban villages and one of the most exciting places in the world to live, work & play.

We work with both property owners and their occupiers, sharing the story of these vibrant neighbourhoods, conveying the unique soul & energy to future custodians, the people who'll keep them buzzing.

And unlike many real estate businesses we're not just about buildings, because streets & buildings don't make a neighbourhood.

We're about building relationships, because **people make places**.

MISINTERPRETATION ACT (COPYRIGHT) DISCLAIMER: Tavistock Bow Ltd for themselves and for the vendor(s) of this property whose agents they are, given notice that: 1. These particulars do not constitute, not constitute any part of, an offer or contract. 2. None of the statements contained in these particulars as to the property are to be relied on as statements or representations of fact. 3. Any intending purchaser or lessee must satisfy themselves by inspection or otherwise as to the correctness of each of the statements contained in these particulars. 4. The vendor(s) or lessor(s) do not make or give and neither Tavistock Bow Ltd nor any person in their employment has any authority to make or give any representation or warranty whatever in relation to this property. Finance Act 1989, Unless otherwise stated all prices and rents are quote exclusive of VAT. Property Misrepresentation Act 1991; These details are believed to be correct at the time of compilation but may be subject to subsequent amendment.

Follow us:     @tavistockbow

Score	Energy rating	Current	Potential
92+	A		
81-91	B		84 B
69-80	C	78 C	
55-68	D		
39-54	E		
21-38	F		
1-20	G		

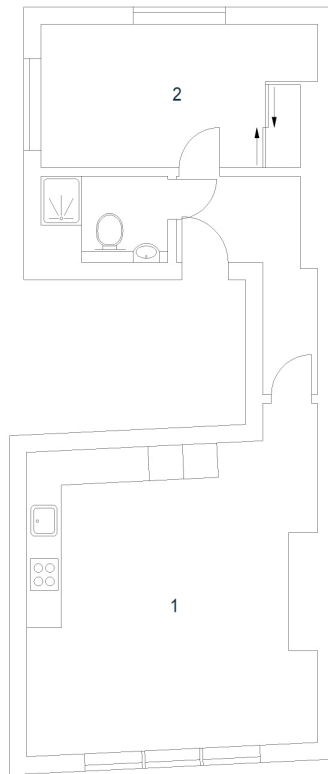
King Street, WC2

Approximate Gross Internal Area 50 sq m / 538 sq ft

Second Floor

1 Kitchen /
Reception
Room
5.27 x 5.06M
17'3" x 16'7"

2 Bedroom
4.86 x 2.48M
15'11" x 8'2"



Floor Plan produced for Tavistock Bow by Mays Floorplans ©. Tel 020 3397 4594
Illustration for identification purposes only, not to scale.

tavistockbow

21 New Row, Covent Garden,
London, WC2N 4LE

t: 020 7477 2177
e: hello@tavistockbow.com
w: tavistockbow.com



King Street, Covent Garden WC2