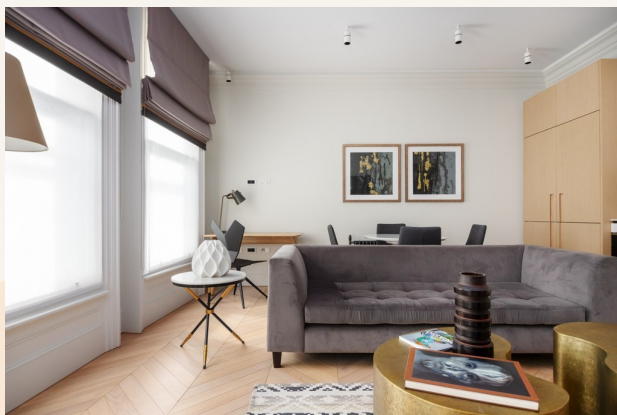


tavistockbow

For Rent



People Make Places



King Street, Covent Garden WC2

1 bedroom | 635 sq ft

£1,050 pw

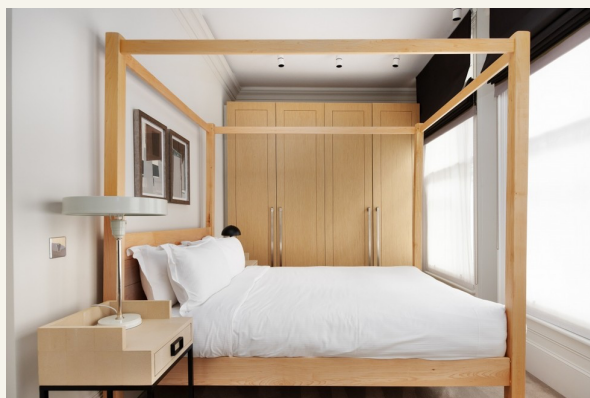




Part of the Floral Collection development located between Floral and King Streets, this immaculately presented one bedroom apartment has a luxurious finish with a marble splashback in the kitchen. High ceilings and a feature fireplace are a nod to the building's heritage. Available furnished May.

What you need to know

- One bedroom
- One bathroom
- First floor (with lift)
- Open plan living space
- Comfort cooling
- Furnished
- Private concierge service available
- Wifi included
- Moments from Covent Garden Station
- Available mid-May



King Street, Covent Garden WC2



Overview

Stylishly finished to the highest of standards, this one bedroom apartment is positioned on one of Covent Garden's most sought after addresses moments from the Piazza and forms part of the Covent Garden Estate, a globally recognised destination. High ceilings and beautiful parquet flooring in the living space give the apartment a luxurious feel, while a feature fireplace creates a focal point. The smart white kitchen is open plan to the living space, while the bathroom is fitted with grey slate tiles with plenty of fitted storage. Carpets are found in the bedroom and comfort cooling is fitted for tenant comfort.

King Street benefits from being fully pedestrianised 20 hours a day with multiple transport options within easy reach. Covent Garden (Piccadilly Line and 49 minutes to Heathrow), Leicester Square (Piccadilly and Northern Lines) and Charing Cross (National Rail, Northern and Bakerloo Lines) stations are easily reached on foot as are central London neighbourhoods like Mayfair, St James's, Soho, Fitzrovia and Bloomsbury.

The apartment is available in May on a furnished basis. Subject to contract and satisfactory references, the landlord offers a one-year lease with a mutual rolling six-month break clause. Westminster Council tax band: F.



King Street, Covent Garden WC2

People Make Places

London is a collection of inspiring urban villages and one of the most exciting places in the world to live, work & play.

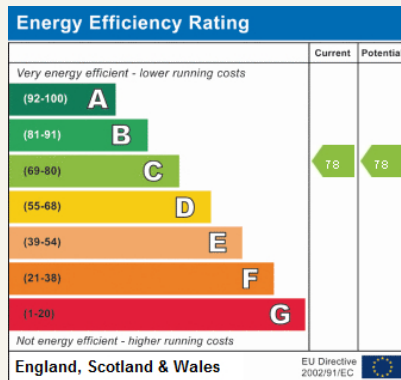
We work with both property owners and their occupiers, sharing the story of these vibrant neighbourhoods, conveying the unique soul & energy to future custodians, the people who'll keep them buzzing.

And unlike many real estate businesses we're not just about buildings, because streets & buildings don't make a neighbourhood.

We're about building relationships, because **people make places**.

MISINTERPRETATION ACT (COPYRIGHT) DISCLAIMER: Tavistock Bow Ltd for themselves and for the vendor(s) of this property whose agents they are, given notice that: 1. These particulars do not constitute, not constitute any part of, an offer or contract. 2. None of the statements contained in these particulars as to the property are to be relied on as statements or representations of fact. 3. Any intending purchaser or lessee must satisfy themselves by inspection or otherwise as to the correctness of each of the statements contained in these particulars. 4. The vendor(s) or lessor(s) do not make or give and neither Tavistock Bow Ltd nor any person in their employment has any authority to make or give any representation or warranty whatever in relation to this property. Finance Act 1989, Unless otherwise stated all prices and rents are quote exclusive of VAT. Property Misrepresentation Act 1991; These details are believed to be correct at the time of compilation but may be subject to subsequent amendment.

Follow us:     @tavistockbow



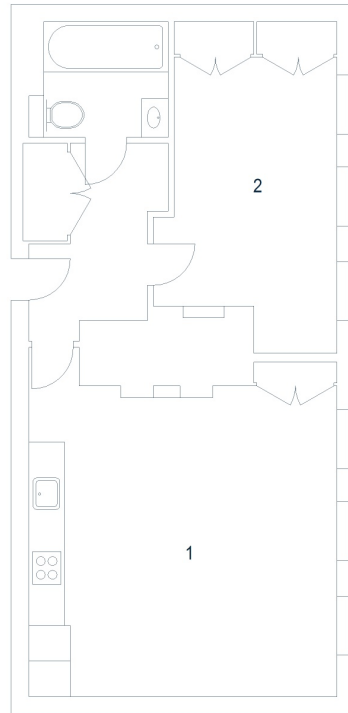
King Street, WC2

Approximate Gross Internal Area 59 sq m / 635 sq ft

First Floor

1 Kitchen/
Reception /
Dining Room
5.23 x 5.18M
17'2" x 17'

2 Bedroom
4.98 x 2.74M
16'4" x 9'



Floor Plan produced for Tavistock Bow by Mays Floorplans ©. Tel 020 3397 4594
Illustration for identification purposes only, not to scale.

tavistockbow

21 New Row, Covent Garden,
London, WC2N 4LE

t: 020 7477 2177
e: hello@tavistockbow.com
w: tavistockbow.com



King Street, Covent Garden WC2