



People Make Places



Floral Street, Covent Garden WC2

1 bedroom | 493 sq ft

£775 pw





Moments from Covent Garden's Piazza, this stunning one bedroom apartment is positioned on the corner of Floral & James Streets. Fitted with a high specification throughout, the kitchen is open-plan to the reception room & comfort cooling is fitted for tenant comfort. Available furnished immediately.

What you need to know

- One double bedroom
- One bathroom
- Open plan kitchen reception room
- Air cooling
- Wood floors
- Furnished
- Available immediately
- 1st floor
- Modern finished
- Moments from Covent Garden tube and Piazza.

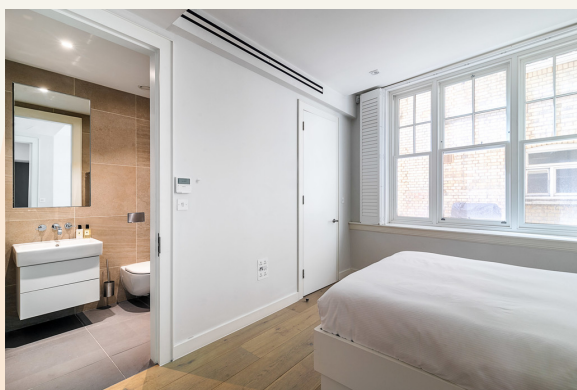


Floral Street, Covent Garden WC2



Overview

Immaculately presented, this one bedroom apartment occupies a prime location on the corner of Floral and James Streets, a stone's throw from Covent Garden Underground Station. On the first floor, walk-up, the apartment retains the original features of the period building that includes large windows, a stunning original fireplace and high ceilings. The kitchen is open plan to the reception room while the shower room has a luxurious walk in shower. Efficient double glazing and comfort cooling is fitted for tenant comfort.



In the heart of London's Covent Garden, the buzzing and stylish district of the West End, this property lies on the cobbled and shop-lined Floral Street, a bustling enclave away from the Covent Garden Piazza lively with street performers and visitors. It forms part of the Covent Garden Estate, where residents benefit from a complimentary membership of Covent Garden Lifestyle Services, which helps them take the stress out of everyday life. The dedicated Covent Garden Lifestyle team is on hand to assist with a vast array of personal and work-related services.

The apartment is available immediately on a furnished basis. Subject to contract and satisfactory references, the landlord offers a one to three-year lease with a mutual rolling six-month break clause. Westminster Council tax band: F.



Floral Street, Covent Garden WC2

People Make Places

London is a collection of inspiring urban villages and one of the most exciting places in the world to live, work & play.

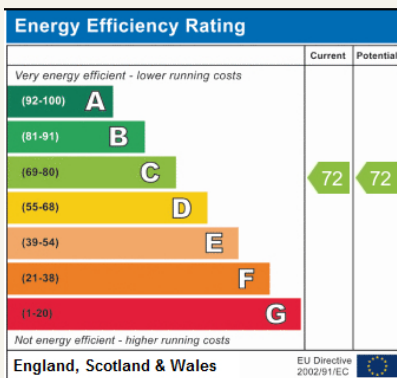
We work with both property owners and their occupiers, sharing the story of these vibrant neighbourhoods, conveying the unique soul & energy to future custodians, the people who'll keep them buzzing.

And unlike many real estate businesses we're not just about buildings, because streets & buildings don't make a neighbourhood.

We're about building relationships, because **people make places**.

MISINTERPRETATION ACT (COPYRIGHT) DISCLAIMER: Tavistock Bow Ltd for themselves and for the vendor(s) of this property whose agents they are, given notice that: 1. These particulars do not constitute, not constitute any part of, an offer or contract. 2. None of the statements contained in these particulars as to the property are to be relied on as statements or representations of fact. 3. Any intending purchaser or lessee must satisfy themselves by inspection or otherwise as to the correctness of each of the statements contained in these particulars. 4. The vendor(s) or lessor(s) do not make or give and neither Tavistock Bow Ltd nor any person in their employment has any authority to make or give any representation or warranty whatever in relation to this property. Finance Act 1989, Unless otherwise stated all prices and rents are quote exclusive of VAT. Property Misrepresentation Act 1991; These details are believed to be correct at the time of compilation but may be subject to subsequent amendment.

Follow us:     @tavistockbow



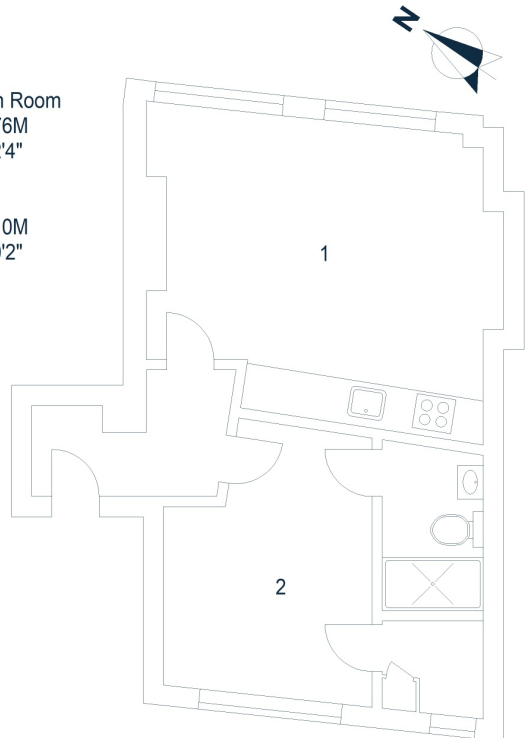
Floral Street,
Covent Garden, WC2

Approximate Gross Internal Area 46 sq m / 495 sq ft

First Floor

1 Kitchen /
Reception Room
4.97 x 3.76M
16'4" x 12'4"

2 Bedroom
3.95 x 3.10M
13'0" x 10'2"



Floor Plan produced for Tavistock Bow by Mays Floorplans © . Tel 020 3397 4594
Illustration for identification purposes only, not to scale.

tavistockbow

21 New Row, Covent Garden,
London, WC2N 4LE

t: 020 7477 2177
e: hello@tavistockbow.com
w: tavistockbow.com



Floral Street, Covent Garden WC2