



People Make Places



Bennet Street, St James's SW1

1 bedroom | 710 sq ft

£1,100 pw



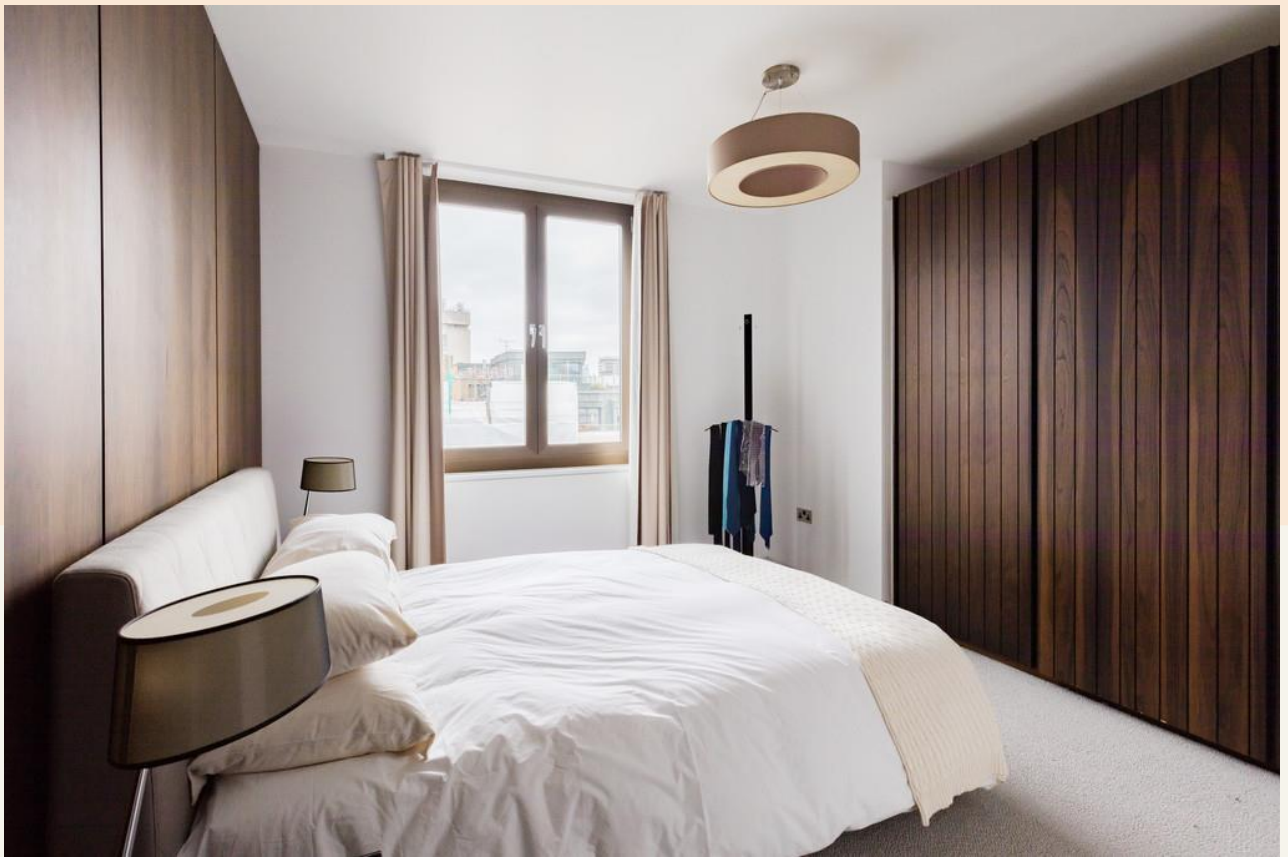


This bright and spacious one-bedroom apartment has a large open plan kitchen which is fully fitted, including a wine fridge and built in coffee machine, as well as elegant wooden floors throughout. The private balcony offers views over Mayfair. Available from late-October on a fully furnished basis.

What you need to know

- One bedroom
- One bathroom
- Open plan kitchen reception room
- Modern finishes
- Air conditioning throughout
- Furnished
- Available in mid/late October
- Moments from The Ritz
- Access via lift
- Closest tube is Green Park





Overview

This beautifully presented one-bedroom apartment offers an abundance of natural light and a generous living space. The open-plan kitchen is fully equipped, featuring high-end appliances such as a wine fridge and built-in coffee machine, all complemented by elegant wooden flooring throughout. Thoughtfully furnished with a dining table and sofa, the apartment provides a seamless integration of living and dining areas. The bathroom is finished to an impeccable standard, boasting chic marble accents and a luxurious waterfall shower. From the private balcony, residents can enjoy a stunning view of Mayfair, although it is worth noting that building works are visible to the south.

Situated within a prestigious and well-maintained building, the apartment benefits from a grand residential entrance and the convenience of a daily reception located in the office building below. Available from October on a furnished basis, the property offers flexible leasing terms, with the landlord open to a 1-3 year contract, including a mutual rolling break clause after the initial six months, subject to contract and satisfactory references.



Bennet Street, St James's SW1

People Make Places

London is collection of inspiring urban villages and one of the most exciting places in the world to live, work & play.

We work with both property owners and their occupiers, sharing the story of these vibrant neighbourhoods, conveying the unique soul & energy to future custodians, the people who'll keep them buzzing.

And unlike many real estate businesses we're not just about buildings, because streets & buildings don't make a neighbourhood.

We're about building relationships, because **people make places**.

MISINTERPRITATION ACT (COPYRIGHT) DISCLAIMER: Tavistock Bow Ltd for themselves and for the vendor(s) of this property whose agents they are, given notice that: 1. These particulars do not constitute, not constitute any part of, an offer or contract. 2. None of the statements contained in these particulars as to the property are to be relied on as statements or representations of fact. 3. Any intending purchaser or lessee must satisfy themselves by inspection or otherwise as to the correctness of each of the statements contained in these particulars. 4. The vendor(s) or lessor(s) do not make or give and neither Tavistock Bow Ltd nor any person in their employment has any authority to make or give any representation or warranty whatever in relation to this property. Finance Act 1989, Unless otherwise stated all prices and rents are quote exclusive of VAT. Property Misrepresentation Act 1991. These details are believed to be correct at the time of compilation but may be subject to subsequent amendment.

Follow us:     @tavistockbow

Score	Energy rating	Current	Potential
92+	A		
81-91	B	82 B	82 B
69-80	C		
55-68	D		
39-54	E		
21-38	F		
1-20			

Energy efficiency chart

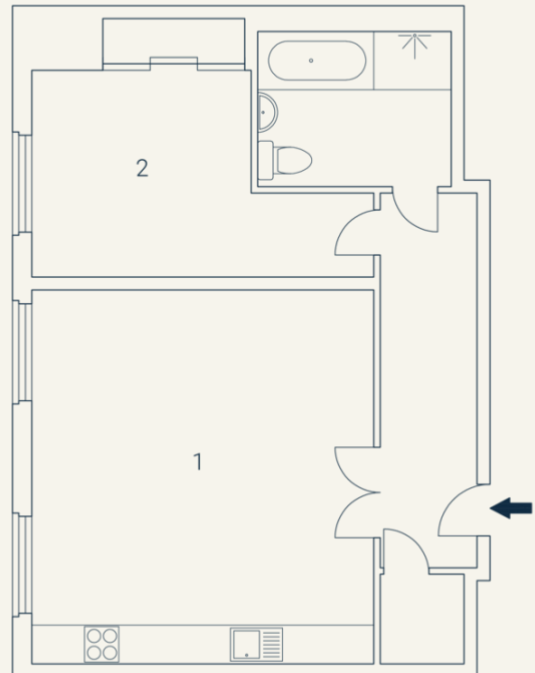
Bennet Street, SW1

Approximate Gross Internal Area 66 sqm/ 710 sq ft

Sixth Floor

1 Living/
Dining/
Kitchen
5.71 x 5.29M
18'9" x 17'4"

2 Bedroom
6.73 x 3.84M
22'1" x 12'7"



Floorplan produced for Tavistock Bow. Illustration for identification purposes only and not to scale. All measurements are approximate and not to be relied upon.

tavistockbow

21 New Row, Covent Garden,
London, WC2N 4LE

t: 020 7477 2177
e: hello@tavistockbow.com
w: tavistockbow.com



Bennet Street, St James's SW1