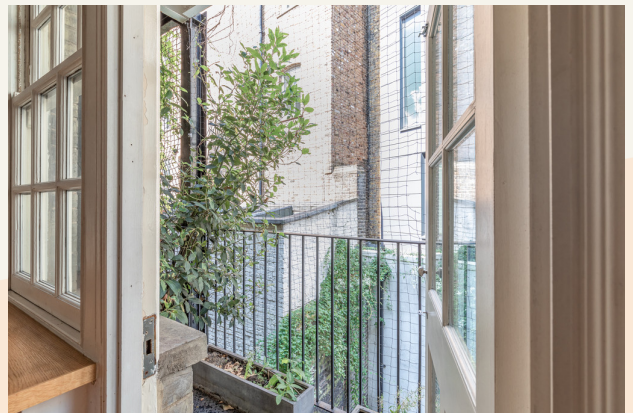


**For Rent**



## People Make Places



**Broad Court, Covent Garden**

2 bedrooms | 818 sq ft

£995 pw





This well-placed, two-bedroom flat is on the first floor of a handsome period building in Covent Garden. Fully furnished, this stylish fuss-free flat has wood burning effect gas stoves, and an eclectic mix of furnishing features. The quiet balcony is a great addition to the open-plan kitchen/diner.

#### What you need to know

- Two bedrooms
- One Bathroom
- First floor (walk up)
- Separate kitchen/dining area
- Recently redecorated
- Fully furnished
- In the heart of the West End
- Balcony
- Short walk to Covent Garden station
- Available immediately





### Overview

This wonderful two-bedroom flat occupies the preferred first floor position within a handsome period building in the ever popular Covent Garden. The property is situated on a quiet pedestrian street between the Royal Opera House and Drury Lane and enjoys open aspects over neighbouring gardens.

Broad Court is remarkably peaceful yet is exceptionally well placed to take advantage of the Covent Garden district with an enviable selection of superb restaurants and bars. Covent Garden, Holborn and Leicester Square tube stations are close by. The building is initially entered via a secure entry system leading to a recently decorated and well-maintained communal hall. The property is one and a half flights up. You enter the property to a welcoming hallway leading off to two bedrooms, bathroom, large eat in kitchen with balcony and living room.

The living room has two large windows facing onto Broad Court and gardens. There is a wood burning effect gas stove, and an eclectic mix of antiques plus stylish and comfortable designer.



# People Make Places

London is collection of inspiring urban villages and one of the most exciting places in the world to live, work & play.

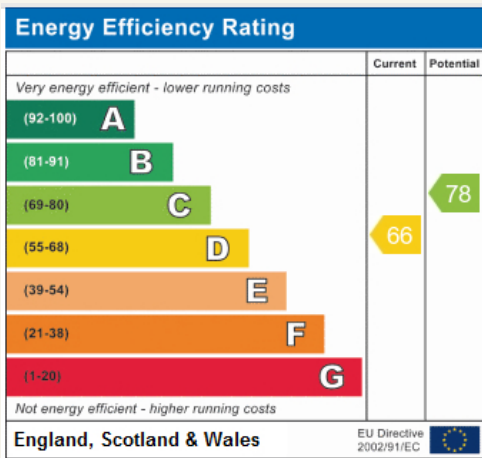
We work with both property owners and their occupiers, sharing the story of these vibrant neighbourhoods, conveying the unique soul & energy to future custodians, the people who'll keep them buzzing.

And unlike many real estate businesses we're not just about buildings, because streets & buildings don't make a neighbourhood.

We're about building relationships, because **people make places**.

MISINTERPRETATION ACT [COPYRIGHT] DISCLAIMER: Tavistock Bow Ltd for themselves and for the vendor(s) of this property whose agents they are, given notice that: 1. These particulars do not constitute, not constitute any part of, an offer or contract. 2. None of the statements contained in these particulars as to the property are to be relied on as statements or representations of fact. 3. Any intending purchaser or lessee must satisfy themselves by inspection or otherwise as to the correctness of each of the statements contained in these particulars. 4. The vendor(s) or lessor(s) do not make or give and neither Tavistock Bow Ltd nor any person in their employment has any authority to make or give any representation or warranty whatever in relation to this property. Finance Act 1989, Unless otherwise stated all prices and rents are quote exclusive of VAT. Property Misrepresentation Act 1991; These details are believed to be correct at the time of compilation but may be subject to subsequent amendment.

Follow us:     @tavistockbow

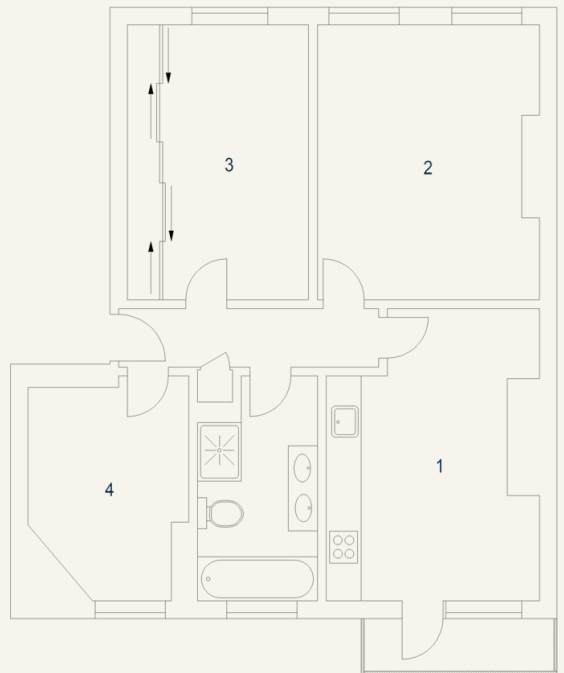


Broad Court, WC2

Approximate Gross Internal Area 76 sq m / 818 sq ft

First Floor

- 1 Kitchen  
4.98 x 3.11M  
16'4" x 10'2"
- 2 Living Room  
4.69 x 3.80M  
15'5" x 12'6"
- 3 Bedroom  
4.71 x 3.08M  
15'5" x 10'1"
- 4 Bedroom  
3.84 x 2.69M  
12'7" x 8'10"



Floor Plan produced for Tavistock Bow by Mays Floorplans © . Tel 020 3397 4594  
Illustration for identification purposes only, not to scale.

**tavistockbow**

21 New Row, Covent Garden,  
London, WC2N 4LE

t: 020 7477 2177  
e: hello@tavistockbow.com  
w: tavistockbow.com



**Broad Court, Covent Garden**