

For Rent



People Make Places



Henrietta Street, Covent Garden WC2

1 bedroom | 604 sq ft

£960 pw





A stunning one bedroom flat on the 1st floor of this fantastic development on Henrietta Street. Refurbished to an exceptional standard, the apartment offers light and airy accommodation with high ceilings, in a period building just off Covent Garden piazza and moments from many world class restaurants.

What you need to know

- One double bedroom
- Modern shower room
- Very high specification
- Good storage
- 1st floor
- Furnished
- Available immediately
- 24 hour Covent Garden security (not porter)
- Bedroom situated at rear of building
- Amazing Covent Garden location



Henrietta Street, Covent Garden WC2



Overview

The flat is on the 1st floor and has an open plan kitchen reception room, large double bedroom with excellent built in storage and a modern shower room with Hans Grohe fittings. Henrietta Street is fast becoming one of the most desirable addresses in Covent Garden with Flat Iron and the Parisian restaurant, Frenchie, one of our firm favourites. There are also a number of fantastic boutique shops.

The apartment has been beautifully furnished and is available immediately. The landlord offers a 3 year lease (subject to contract) with either a mutual break clause, as negotiated. Westminster council tax band: E.

Henrietta Street is one of Covent Garden's most sought after addresses, being one of the streets that serve the Piazza. The ongoing transformation in recent years sees the street lined with a number of fashion boutiques, luxury retailers, top eateries, favourites include Oystermen, The Henrietta and Flat Iron.

There are a number of transport options – Covent Garden (Piccadilly Line), Leicester Square (Piccadilly & Northern lines), Charing Cross (main line train, Northern & Bakerloo lines).



People Make Places

London is collection of inspiring urban villages and one of the most exciting places in the world to live, work & play.

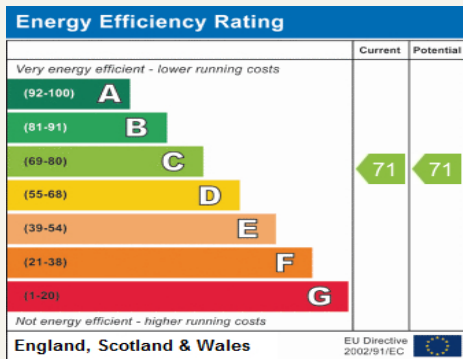
We work with both property owners and their occupiers, sharing the story of these vibrant neighbourhoods, conveying the unique soul & energy to future custodians, the people who'll keep them buzzing.

And unlike many real estate businesses we're not just about buildings, because streets & buildings don't make a neighbourhood.

We're about building relationships, because **people make places**.

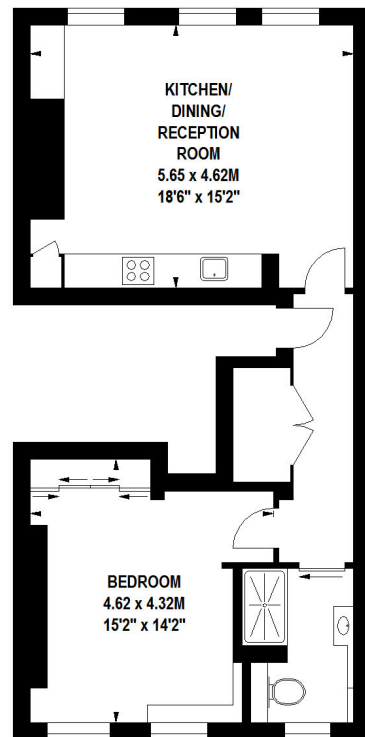
MISINTERPRETATION ACT [COPYRIGHT] DISCLAIMER: Tavistock Bow Ltd for themselves and for the vendor(s) of this property whose agents they are, given notice that: 1. These particulars do not constitute, nor constitute any part of, an offer or contract. 2. None of the statements contained in these particulars as to the property are to be relied on as statements or representations of fact. 3. Any intending purchaser or lessee must satisfy themselves by inspection or otherwise as to the correctness of each of the statements contained in these particulars. 4. The vendor(s) or lessor(s) do not make or give and neither Tavistock Bow Ltd nor any person in their employment has any authority to make or give any representation or warranty whatever in relation to this property. Finance Act 1989, Unless otherwise stated all prices and rents are quote exclusive of VAT. Property Misrepresentation Act 1991; These details are believed to be correct at the time of compilation but may be subject to subsequent amendment.

Follow us:     @tavistockbow



Henrietta Street, WC2

Approximate gross internal area
56 sq m / 603 sq ft



First Floor

Floor Plan produced for Tavistock Bow by Mays Floorplans © . Tel 020 3397 4594
Illustration for identification purposes only, not to scale
All measurements are maximum, and include wardrobes and window bays where applicable

tavistockbow

21 New Row, Covent Garden,
London, WC2N 4LE

t: 020 7477 2177
e: hello@tavistockbow.com
w: tavistockbow.com

Henrietta Street, Covent Garden WC2

