

*tavistockbow*

**For Rent**



## People Make Places



**Pied Bull Court, Bloomsbury WC1**

2 bedrooms | 926 sq ft

£925 pw

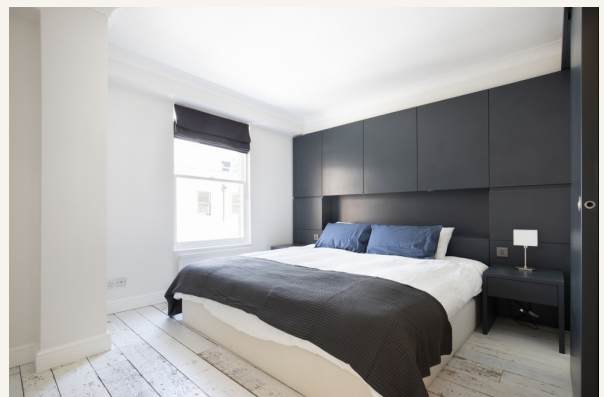




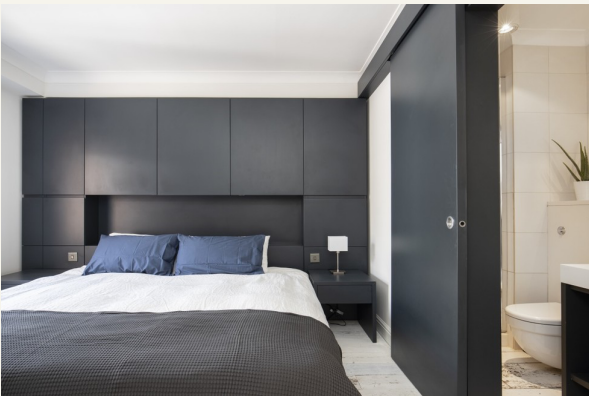
A beautifully presented, recently redecorated two double bedroom apartment to rent in Holborn. This immaculately presented property offers a bright and spacious living space with a separate kitchen. There are two generously sized bedrooms (one with en-suite) that overlook Pied Bull Court.

#### What you need to know

- Two bedrooms
- Two bathrooms (one en-suite)
- Third floor
- Wooden floors throughout
- Modern kitchen and bathrooms
- Part-Furnished
- Contemporary finish throughout
- Tranquil setting
- Short walk to Holborn and Tottenham Court Road stations
- Available mid April







### Overview

A beautifully presented, recently redecorated two double bedroom apartment to rent in Holborn. This immaculately presented property offers a bright and spacious living space with a separate kitchen. There are two generously sized bedrooms (one with en-suite) that overlook Pied Bull Court. Located only a short walk from Holborn and Tottenham Court Road stations, Pied Bull Court is a tranquil square with a number of amazing cafes and restaurants. It is moments from Cordon Bleu cookery school.

Situated on the 3rd floor, with a passenger lift.

The property is available mid-April on a part-furnished basis (no sofa), 1 to 3 year contract, straight or with a minimum 6 months mutual break clause as negotiated and subject to contract and satisfactory references.

Camden Council tax band G.





Pied Bull Court, Bloomsbury WC1



# People Make Places

London is collection of inspiring urban villages and one of the most exciting places in the world to live, work & play.

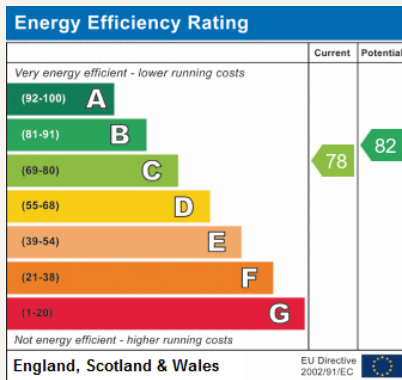
We work with both property owners and their occupiers, sharing the story of these vibrant neighbourhoods, conveying the unique soul & energy to future custodians, the people who'll keep them buzzing.

And unlike many real estate businesses we're not just about buildings, because streets & buildings don't make a neighbourhood.

We're about building relationships, because **people make places**.

MISINTERPRETATION ACT (COPYRIGHT) DISCLAIMER: Tavistock Bow Ltd for themselves and for the vendor(s) of this property whose agents they are, given notice that: 1. These particulars do not constitute, nor constitute any part of, an offer or contract. 2. None of the statements contained in these particulars as to the property are to be relied on as statements or representations of fact. 3. Any intending purchaser or lessee must satisfy themselves by inspection or otherwise as to the correctness of each of the statements contained in these particulars. 4. The vendor(s) or lessor(s) do not make or give and neither Tavistock Bow Ltd nor any person in their employment has any authority to make or give any representation or warranty whatever in relation to this property. Finance Act 1989, Unless otherwise stated all prices and rents are quote exclusive of VAT. Property Misrepresentation Act 1991; These details are believed to be correct at the time of compilation but may be subject to subsequent amendment.

Follow us:     @tavistockbow



## Pied Bull Court, WC1

Approximate Gross Internal Area 86 sq m / 926 sq ft

Third Floor

- 1 Reception Room  
5.93 x 4.84M  
19'5" x 15'11"
- 2 Kitchen  
3.90 x 3.06M  
12'10" x 10'
- 3 Bedroom  
4.25 x 3.35M  
13'11" x 11'
- 4 Bedroom  
3.48 x 2.66M  
11'5" x 8'9"



Floor Plan produced for Tavistock Bow by Mays Floorplans © . Tel 020 3397 4564  
Illustration for identification purposes only, not to scale.

**tavistockbow**

21 New Row, Covent Garden,  
London, WC2N 4LE

t: 020 7477 2177  
e: hello@tavistockbow.com  
w: tavistockbow.com



**Pied Bull Court, Bloomsbury WC1**