



Low Road | Carleton Forehoe | NR9 4AP  
Guide Price £600,000

twgaze



# Low Road | Carleton Forehoe | NR9 4AP Guide Price £600,000

Guide Price - £600,000 - £625,000. A five bedroom semi detached family home with potential for an annex located in a semi rural location close to Wymondham.

- Guide Price - £600,000 - £625,000
- Semi detached family home
- Semi rural location
- Main lounge with wood burner
- Some updating required
- Five bedroom
- Potential annex for multi generational living
- Modern open plan kitchen/ lounge
- Off road parking for several vehicles
- Good size enclosed garden

## The Location

Carlton Forehoe and Kimberley a small hamlet with its semi rural charm is located less than 2 miles from the historic market town of Wymondham. Wymondham itself is a historic market town just 10 miles south of Norwich city centre. The town benefits from a variety of good schooling, both primary and secondary, with Wymondham college in particular, boasting an 'outstanding' Ofsted rating. There are good supermarkets including Waitrose and numerous small businesses in the town. Transport buses link the surrounding towns and villages and the town's railway station also provides a direct line into Norwich, Ely and Cambridge, with London commutable in around 2 hours.







## The Property

This Spacious Five-Bedroom Semi-Detached Home with Annex Potential – Ideal for Growing or Multi-Generational Families. With versatile and generously proportioned five-bedroom semi-detached home offers a unique blend of character and modern living, making it perfect for large families or multi-generational living. Upon entering the property, you are welcomed by a spacious entrance hall that flows into multiple reception areas, including a cosy snug, a formal dining room, and a well-appointed kitchen. A ground floor shower room adds convenience for family and guests alike. The formal lounge, featuring a charming wood burner, leads into the beautifully designed modern extension – formerly an annex – that significantly enhances the home's flexibility. This area includes an additional lounge/kitchen with sleek bi-folding doors opening onto the garden, a separate dining area, a reception room, and an impressive main bedroom boasting exposed beams, a vaulted ceiling, and its own wood burner – a perfect private retreat or independent living space. Upstairs, a spacious landing provides access to four well-sized bedrooms and an executive family bathroom. The bathroom suite is a true luxury, featuring a freestanding roll-top bath and an oversized double shower with an overhead rainwater effect showerhead.

## The Outside

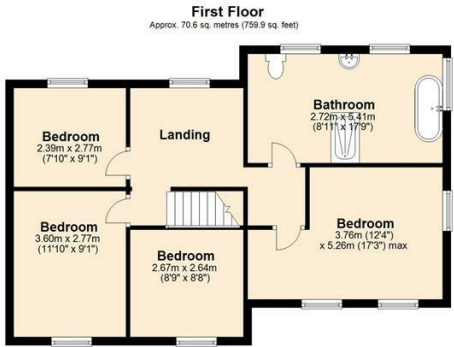
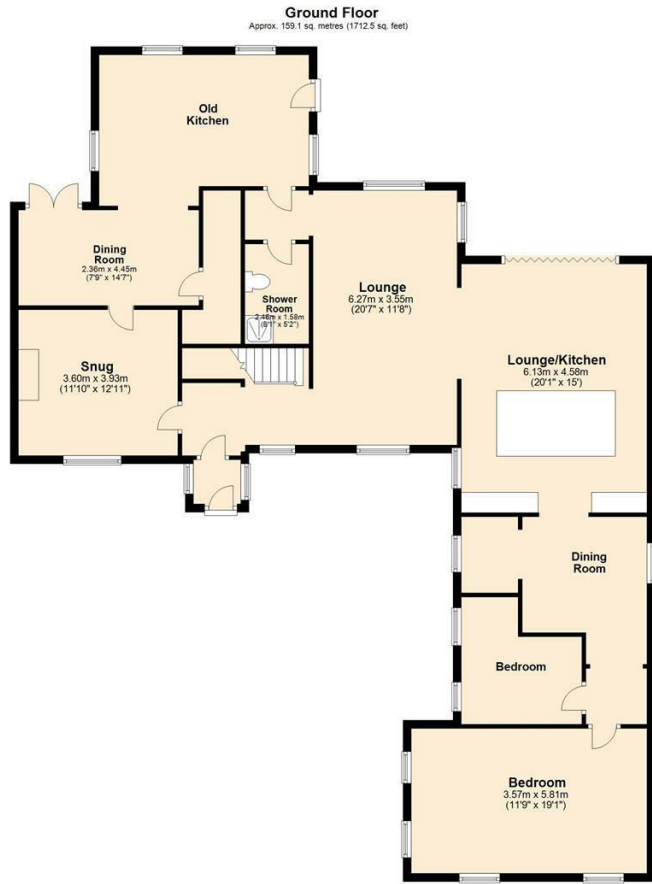
Set in a peaceful countryside location, this charming property is nestled along a quiet country lane and enjoys open field views to the front, side, and rear. The generous shingle driveway provides ample parking for several vehicles. To the rear, a private and enclosed garden offers a tranquil retreat, featuring a large lawn with a scattering of mature trees, a decked area, a covered gazebo area perfect for outdoor dining or relaxing, and a timber summer house ideal for hobbies, storage, or as a garden retreat.

## Freehold

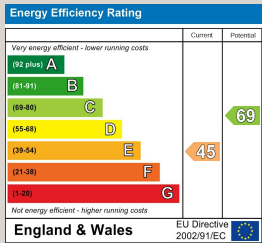
Services Mains water , mains electricity, private sewage treatment plant, LPG Gas

## Council tax D

Viewing strictly by appointment only via Twgaze



Total area: approx. 229.7 sq. metres (2472.4 sq. feet)



33 Market Street  
Wymondham  
Norfolk  
NR18 0AJ  
01953 423 188  
info@twgaze.co.uk