



| Flordon | NR15 1LX  
Offers Over £650,000

twgaze



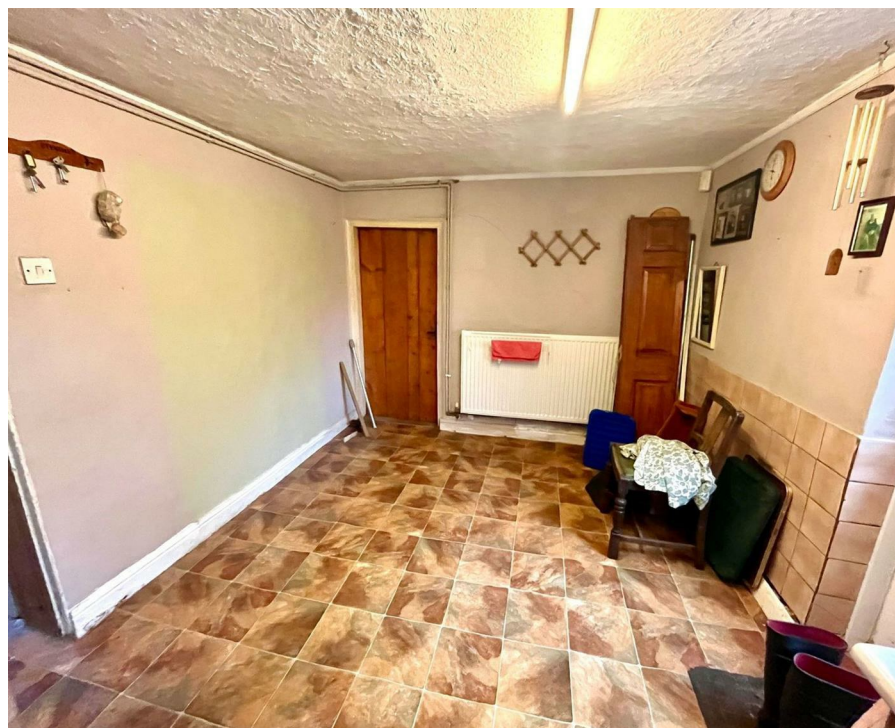
# | Flordon | NR15 1LX Offers Over £650,000

Set in a choice of 7ac or 17ac or thereabouts of grassland with attractive views. Period house for updating. No onward chain.

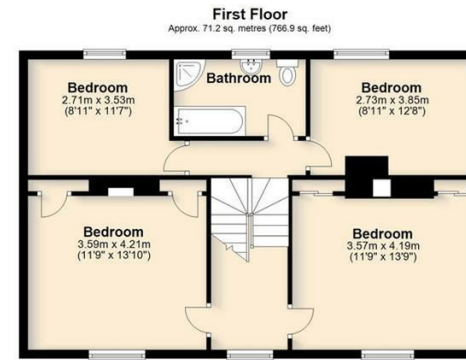
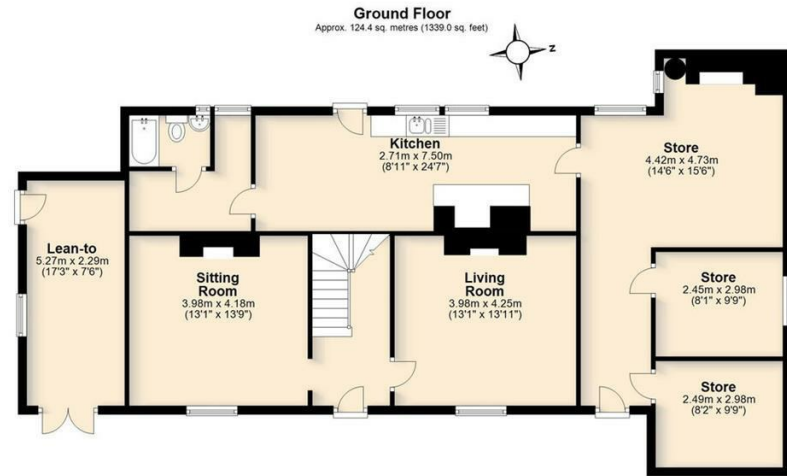
- Set in either 7ac or 17ac (Approx) of grassland
- Good looking house needs updating
- Scope to extend
- No Onward chain











Total area: approx. 195.6 sq. metres (2105.9 sq. feet)

Energy Efficiency Rating		
	Current	Potential
Very energy efficient - lower running costs		
(12 plus) <b>A</b>		
(81-91) <b>B</b>		
(69-80) <b>C</b>		
(55-68) <b>D</b>		
(39-54) <b>E</b>		
(21-38) <b>F</b>		
(1-20) <b>G</b>		
Not energy efficient - higher running costs		
England & Wales		
EU Directive 2002/91/EC		

33 Market Street  
Wymondham  
Norfolk  
NR18 0AJ  
01953 423 188  
info@twgaze.co.uk