



14 Nelson Close  
Hethersett  
Norwich  
NR9 3JZ

Guide price: £260,000





- Semi-detached house
- Offered with no onwads chain
- Three bedrooms
- Off road parking
- Double glazing and gas central heating
- Open plan lounge/diner
- Conservatory
- Ground floor bedroom/study with en suite
- Private garden

### Location

Nelson close can be found on the ever-popular Steeple Tower development in Hethersett, 6 miles southwest of Norwich and close to the Science Park and N&N hospital. Hethersett is well serviced with a selection of schools from primary to High School. There are good access routes to the A11 and A47 and a bus stop can be found within walking distance with regular service to the larger market town of Wymondham and Norwich. Wymondham is a vibrant market town offering a range of shopping facilities including Waitrose and Morrisons supermarkets, range of local retailers, pubs and restaurants and highly regarded schooling at Wymondham College and Wymondham High Academy. The train station lies on the Norwich to Cambridge main line with regular commuter connections into London Kings Cross Norwich is home to a thriving business community leading shopping centres, cinemas, theatres, restaurants and other leisure facilities.





### Property

This well-presented three-bedroom semi-detached home, offers versatile living space ideal for modern family living. The ground floor features a converted garage, now a spacious bedroom or study with an en-suite shower room, perfect for guests or home office use. There is a large lounge/diner, leading to a conservatory, and a kitchen which would benefit from some updating. Upstairs, there are three good-sized bedrooms and a family bathroom. This home benefits from double glazing and gas central heating throughout. Viewing is highly recommended to fully appreciate the space and potential this property offers.

### Outside

Externally, the property boasts a driveway providing off-road parking and a front lawn with potential to create further parking if required. To the rear, an enclosed low-maintenance garden offers a private retreat, with a side gate for easy access to the front.

### Services

The property is on mains electricity, water, drainage and mains gas.

### How to get there:

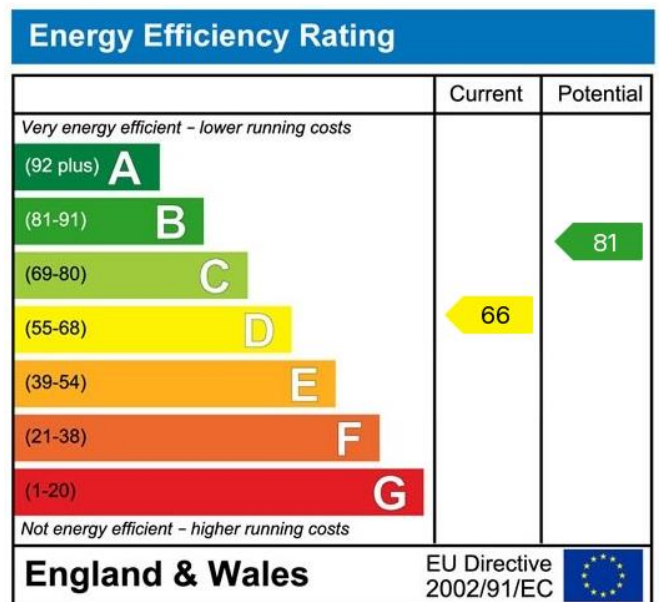
[what3words/// novel.maps.resolves](http://what3words///novel.maps.resolves)

### Viewings

**Strictly by appointment only**

Ref: 2/19681

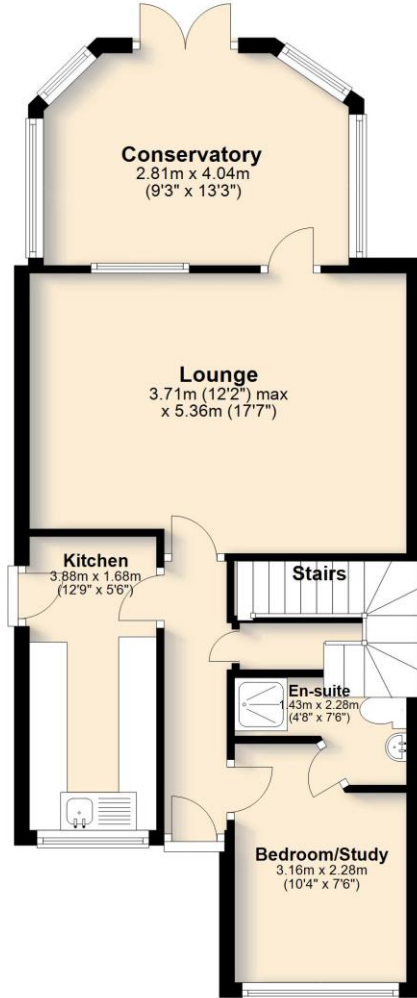
**Tenure:** Freehold





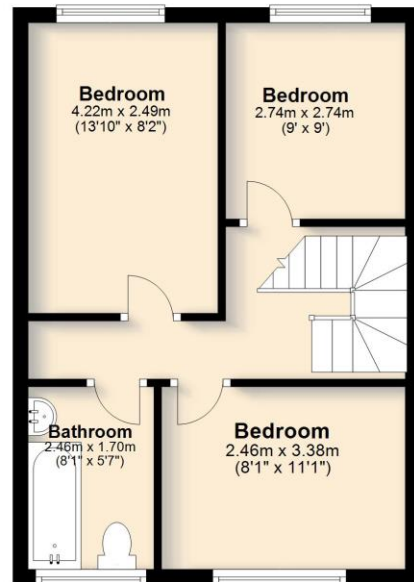
### Ground Floor

Approx. 63.2 sq. metres (680.0 sq. feet)



### First Floor

Approx. 38.9 sq. metres (419.2 sq. feet)



Total area: approx. 102.1 sq. metres (1099.3 sq. feet)

#### For illustrative purposes only. NOT TO SCALE.

This plan is the copyright of TW Gaze and may not be altered, photographed, copied or reproduced without written consent.

#### Important Notice

TW Gaze for themselves and for their Client give notice that:-

1. The particulars have been prepared to give a fair description for the guidance of intending purchasers and do not constitute part of an offer or contract. Prospective purchasers and lessees ought to seek their own professional advice.
2. All descriptions, dimensions, areas, distances, reference to condition and necessary permissions for use and occupation and other details are given in good faith but should not be relied upon as statements or representations of fact. The text, photographs and plans are for guidance only and are not necessarily comprehensive.
3. No person in the employment of TW Gaze has any authority to make or give any representations or warranty whatever in relation to this property on behalf of TW Gaze, nor enter into any contract on behalf of the Vendor.
4. No responsibility can be accepted for any expenses incurred by intending purchasers in inspecting properties which have been sold, let or withdrawn.
5. It should not be assumed that the property has all necessary planning, building regulation or other consents.
6. TW Gaze have not tested any service, equipment or facilities.

While we endeavour to make our sales particulars accurate and reliable, if there is any point which is of particular importance to you, please contact this office and we will be pleased to check the information for you, particularly if contemplating travelling some distance to view the property.

10 Market Hill  
Diss  
Norfolk IP22 4WJ  
t: 01379 651 931

33 Market Street  
Wymondham  
Norfolk NR18 0AJ  
t: 01953 423 188

rural@twgaze.co.uk  
www.twgaze.co.uk

