



Corner Farm The Street  
Hardwick  
NR15 2SR

twgaze





Price Guide £1,100,000





- Wonderful 6 bedroom Grade II listed character home, with parts dating back to 16th century
- Set in around 6 acres of mature garden, grounds and plantation
- Accommodation across three floors in main house
- Self contained 2 bedroom annex, with permission for use as holiday let
- Large barn, open cart lodge and various clay lump outbuilding
- Abundance of stand out features throughout
- Non-estate, village location
- Around 14 miles from Norwich

#### Location

Hardwick is a small, quiet village nestled just a few miles to the east of Long Stratton, a well served town which plays host to a good selection of local shops, businesses and daily amenities, including a Co-op supermarket and fuel stations/garage. Hardwick is just a couple of miles from the A140, a route which runs north towards the historic and cultural city of Norwich (15 miles) and south, towards Diss (13 miles).

#### The Property

Attractive Grade II listed 6 bedroom family residence with parts of the building dating back to 16th century, with later additions/extensions in more recent times. The house carefully underwent extensive refurbishment a couple of decades ago under the stewardship of the current owners, with the sellers placing huge emphasis on retaining the charm and abundance of original character the property possesses. There are great social spaces to enjoy, such as the 'country style' fitted kitchen/diner, juxtaposing a cosy snug and formal reception room with prominent features, such as the living/dining Room with exposed timbers and imposing Inglenook fireplace which neighbours a 'sub level' Library/study, with inset timbers and remnant Mullion windows; both rooms are shining examples of where the heritage of this wonderful property are distinctly on show. As can be seen from the floor plan, the bedrooms are spread across two upper floors, from 'halfway' landings, via an intriguing curving stairwell. The main bedroom suite is generous in size, with dressing room leading to an en-suite bathroom, boasting a roll top bath. A spacious 'split level' guest bedroom suite is discretely found from a separate staircase accessed from the kitchen/diner.

#### Garden & grounds





A main driveway leads off the highway, passing an established willow and opening to the parking area, adjacent two similar sized brick Nissan huts/garaging. Picket fencing opens onto the private, mature lawns which sweep around the main house to where a patio area can be found. Beyond the formal gardens a personnel gate and large open ended storage outbuilding, both giving access onto a section of wild garden which edges the plantation.

The established plantation covers over 4 acres of the entire grounds and comprises an area of uniformly planted pine trees, tall Leylandii and more - which is an absolute haven for wildlife.

A natural pathway works its way around the edge and provides a unique and tranquil place to walk enjoy nature on your very doorstep!

The barn and cart-lodge

A large, 30' timber clad barn is an ideal storage facility and sides onto the adjoining open ended, Cart-lodge with storage attic above.

The annexe, office and other outbuildings.

Gates open to a secondary driveway offering plenty of space for vehicles to park. A secure double garage joins to a useful home office, providing a great place to work.

Three further clay lump stores are handy for additional storage needs. The annex sits independently from the main house and has successfully been used as a holiday let for several years, however, could equally provide a perfect solution for older or younger family members, independent or multi-generational living. The main annex living room is light and holds a 'wow' factor due to its vaulted height and open staircase leading to the twin bedroom. A functional kitchen/diner is well fitted and holds charming features of its own. A ground floor main bedroom and bathroom complete the accommodation.

Agent note: Council Tax band was issued prior to annex accommodation.

A section of garden is being 'held back' from sale, whilst there is currently no planning residential permission granted on this parcel of land, this could alter in due course.

#### Services

Both house and annex have independent Oil fired central heating systems. Both have mains water and electricity. Separate private drainage systems.

#### Viewing

By appointment via TW Gaze.

#### How to get there

What3words:///perch.subjects.artist

Tenure: Freehold

Council Tax: D

Ref: 2/19876/RM







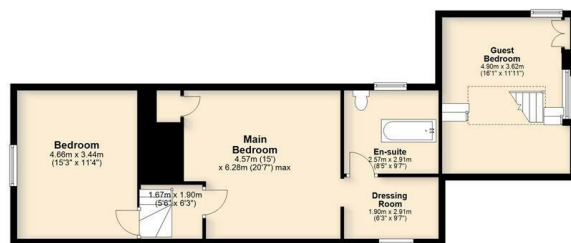








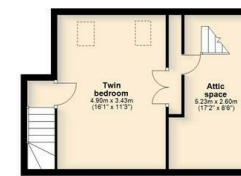




**First Floor**  
Approx. 79.0 sq. metres (850.6 sq. feet)

**Second Floor**  
Approx. 55.2 sq. metres (595.4 sq. feet)

Total area: approx. 246.0 sq. metres (2646.3 sq. feet)



Total area: approx. 222.5 sq. metres (2395.3 sq. feet)

## Important Notice

TW Gaze for themselves and for their Client give notice that:-

1. The particulars have been prepared to give a fair description for the guidance of intending purchasers and do not constitute part of an offer or contract. Prospective purchasers and lessees ought to seek their own professional advice. 2. All descriptions, dimensions, areas, distances, reference to condition and necessary permissions for use and occupation and other details are given in good faith but should not be relied upon as statements or representations of fact. The text, photographs and plans are for guidance only and are not necessarily comprehensive. 3. No person in the employment of TW Gaze has any authority to make or give any representations or warranty whatever in relation to this property on behalf of TW Gaze, nor enter into any contract on behalf of the Vendor. 4. No responsibility can be accepted for any expenses incurred by intending purchasers in inspecting properties which have been sold, let or withdrawn. 5. It should not be assumed that the property has all necessary planning, building regulation or other consents. 6. TW Gaze have not tested any service, equipment or facilities.

While we endeavour to make our sales particulars accurate and reliable, if there is any point which is of particular importance to you, please contact this office and we will be pleased to check the information for you, particularly if contemplating travelling some distance to view the property.

10 Market Hill  
Diss  
Norfolk IP22 4WJ  
t: 01379 651 931

33 Market Street  
Wymondham  
Norfolk NR18 0AJ  
t: 01953 423 188

prop@twgaze.co.uk

www.twgaze.co.uk

