



Site at Hilltop  
Hall Road  
Brockdish  
Norfolk  
IP21 4JT

twgaze





**Development of just five properties in the popular Norfolpk  
village of Brockdish**

**1 – Guide Price £545,000**

**Plot 2 – Guide Price £520,000**

**Plot 3 – Guide Price £825,000**

**Plot 4 Guide - £650,000**

**Plot 5 Guide - TBC**





Plot 1

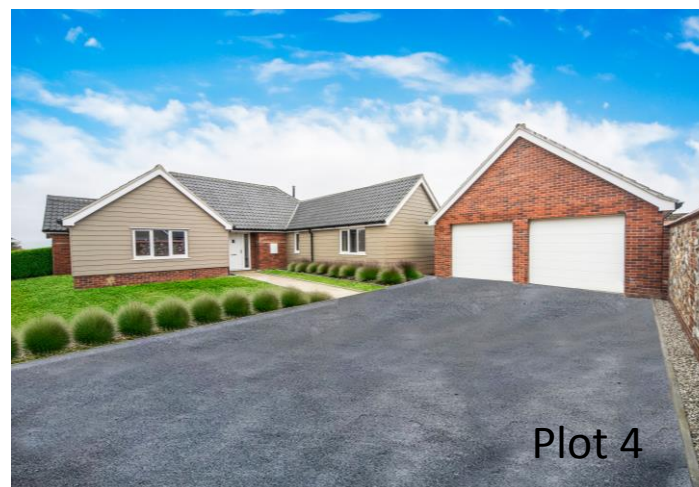
- Select development of just five properties
- Solar panels and air source heat pumps
- Generous plot sizes
- Double/single garages with all properties
- Hi - spec kitchens and bathrooms

#### Location

One of the delightful aspects of this select development is its position which is outside the village in an elevated spot overlooking the village and the Waveney Valley. The village is attractive, with a good pub and lots of walks down to the River Waveney. It is also ideally placed between the market towns of Diss and Harleston with easy access via the A143 and for those needing trips to London, there is the mainline rail service at Diss with a journey to London Liverpool Street in around 90 minutes. The Heritage Coast around Southwold and Aldeburgh is just 40 minutes away and the Broads are a similar time to the north. Overall, this is a very attractive area, nestled on the borders of Norfolk and Suffolk with easy access to the wider world.



Plot 2



Plot 4



## Properties

Danny Ward has been building houses in Norfolk and Suffolk for many years with an excellent reputation for quality and after care. His styles of houses and bungalows complement the traditional architecture of the region and each has high quality fittings with features such as the granite windowsills and underfloor heating as well as the stylish kitchen and bathrooms which are a blend of traditional and modern. The internal layouts have been designed to maximise the living space with a bright and airy rooms. Of particular note are the open plan Kitchens making them the hub of the home. Each has been designed to give a good flow and the houses have been future proofed with ground floor bedrooms as well as those upstairs. Externally, each property be it a bungalow or house, has a generous garden with brick rubble walling being distinctive to Danny's properties. Each has a single or double garage and a spacious sandstone patio. Gardens will be either seeded or turfed depending on time of year.

## Directions

Travelling from Diss along the A143 towards Harleston. Turn right and head down the hill into Brockdish. At the bottom of the hill turn left into Grove Road. Continue past the houses and just before the flyover bridge, turn right onto Hall Road. The houses will be seen in 400m on the right.

**What3words**///health.chambers.metro

## Viewings

strictly by appointment with TWG

Freehold

**Ref**

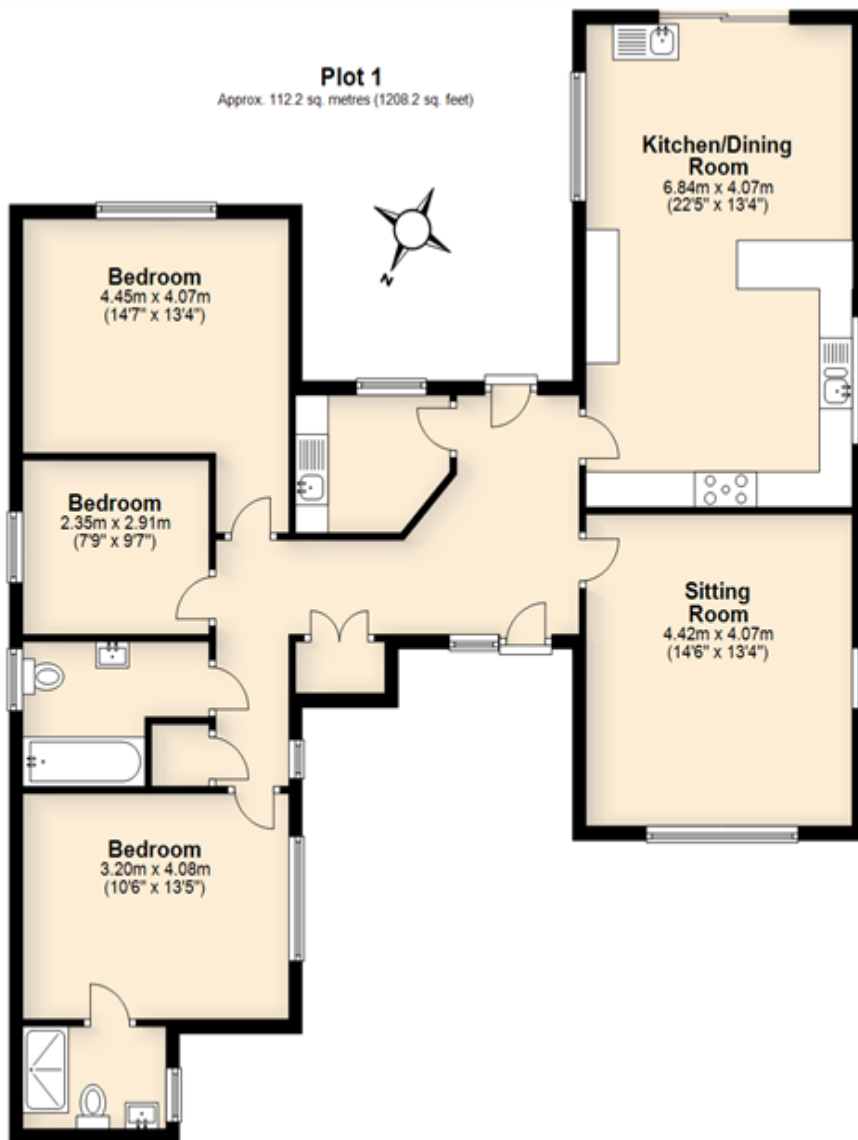




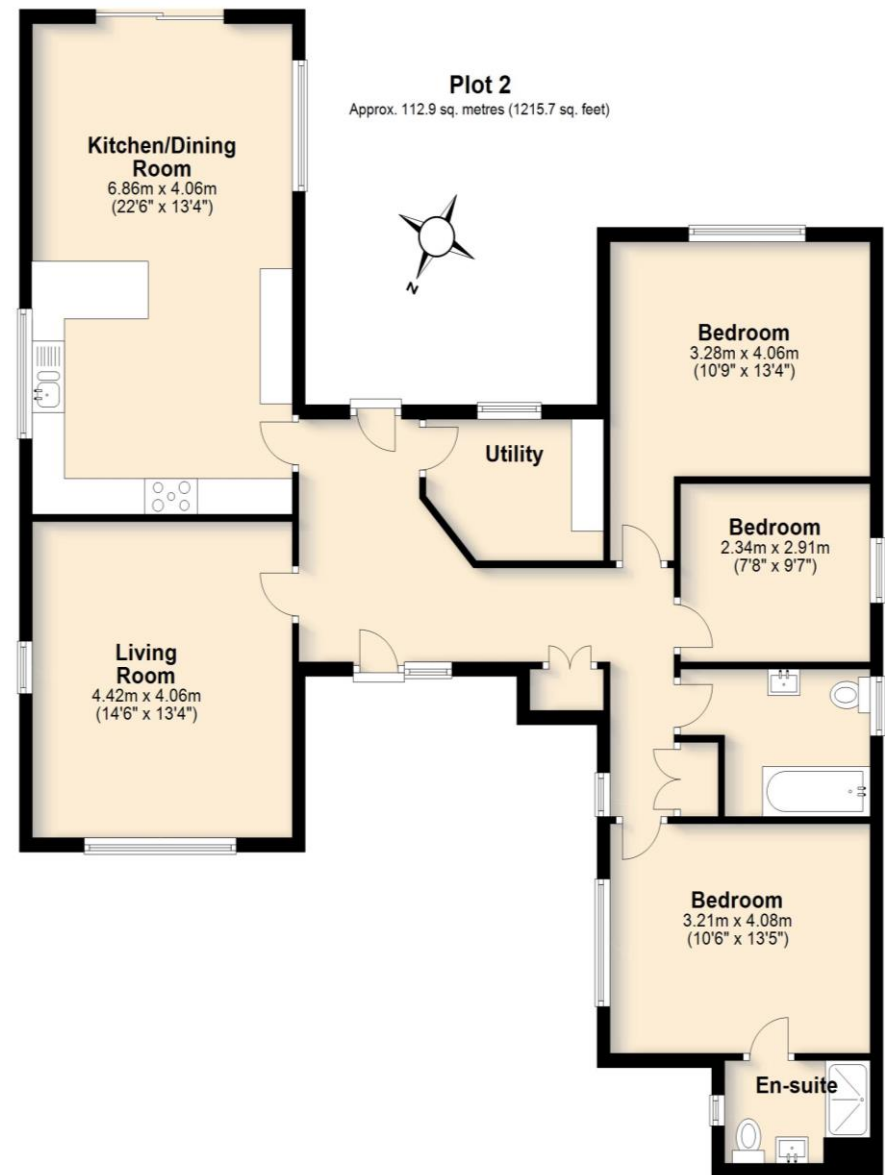
Plot 3



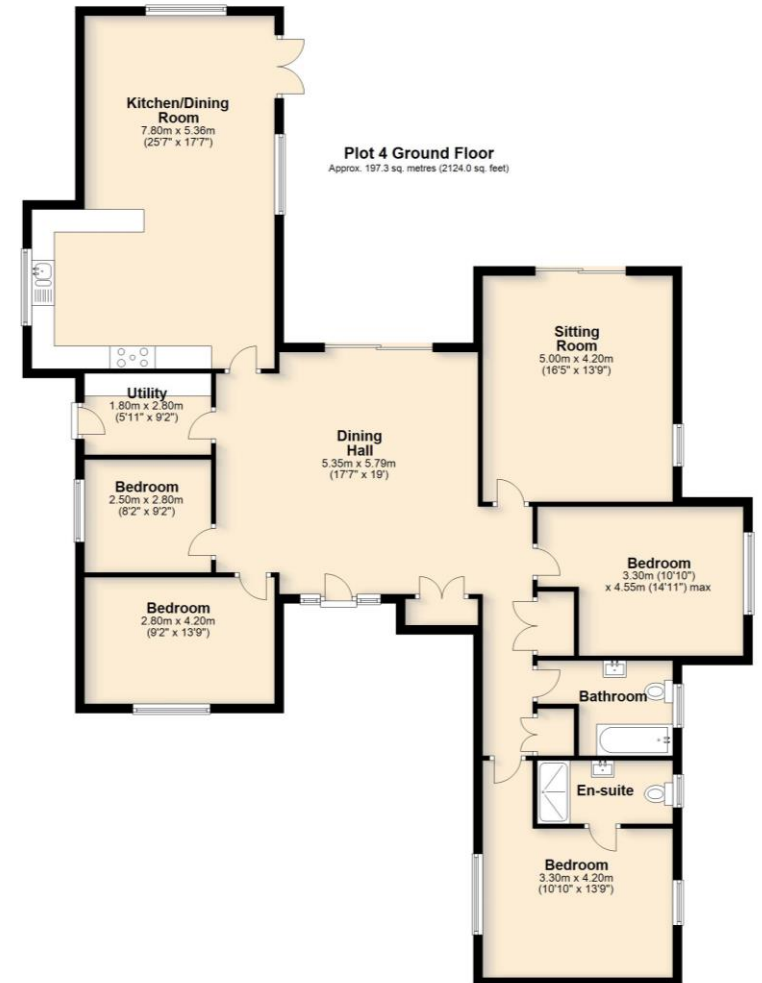




Total area: approx. 112.2 sq. metres (1208.2 sq. feet)



Total area: approx. 112.9 sq. metres (1215.7 sq. feet)



Total area: approx. 197.3 sq. metres (2124.0 sq. feet)



10 Market Hill  
Diss  
Norfolk IP22 4WJ  
t: 01379 651 931

33 Market Street  
Wymondham  
Norfolk NR18 0AJ  
t: 01953 423 188

rural@twgaze.co.uk  
www.twgaze.co.uk

