



Chesterfield House
133 Victora Road
Diss
IP22 4JN

Guide Price: £350,000
NO ONWARD CHAIN





- Elegant Georgian townhouse in Diss
- Walking distance to shops, restaurants, schools, and easy access to main roads and railway services
- Set over four floors with an extensive basement

Location

Diss is a market town on the Norfolk/Suffolk border with a surprising number of independent specialist shops and businesses providing a wide variety of goods and services including three national brand supermarkets. The town has well regarded schools, good sporting and leisure facilities and a wide range of social activities. Diss rail station lies on the Norwich to London Liverpool Street mainline, a journey to London scheduled to take around 90 minutes. The regional, cultural and business centre of Norwich lies approximately 25 miles to the north.





Property

This Georgian townhouse in the historic town of Diss combines classic architectural elegance with modern comforts. The home showcases period features such as original cornices, and mouldings, all of which enhance its character. Spanning four floors and featuring an extensive basement, it's perfect for families or professionals seeking a stylish residence in the heart of the town. The property boasts three spacious bedrooms, each adorned with original features such as high ceilings and large sash windows. There is the convenience of two bathrooms and two additional WC facilities. At the heart of the home is a large kitchen with good counter space, and an island that serves as a breakfast bar. The elegant formal sitting room is highlighted by period fireplaces and large windows with original shutters that fill the space with natural light. The extensive basement offers a versatile space that can be utilized as a gym, home office, or additional ancillary living space. While the property has been maintained and remodelled over the years it now offers the chance for someone to remodel and update it to their taste and requirements

Outside

The private rear garden mainly laid to shingle and entered via double gates

Services

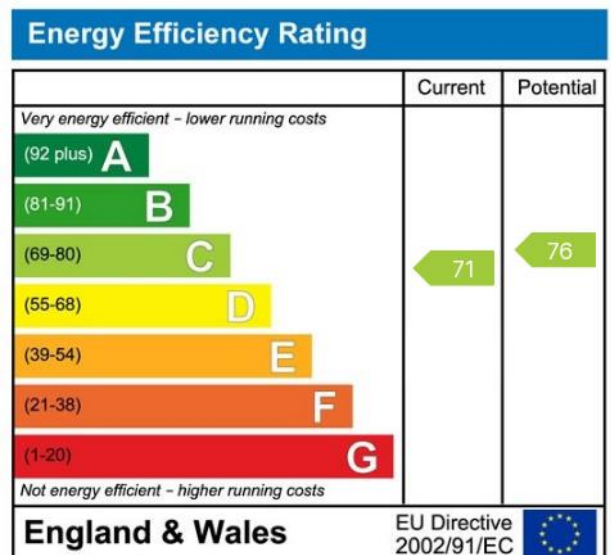
Mains water, drainage, gas and electricity are connected to the property. Gas fired central heating.

How to get there - what3words

///directive.helpful.oddy

Viewing Strictly by appointment with TW Gaze

Freehold.



Important Notice

TW Gaze for themselves and for their Client give notice that:-

1. The particulars have been prepared to give a fair description for the guidance of intending purchasers and do not constitute part of an offer or contract. Prospective purchasers and lessees ought to seek their own professional advice. 2. All descriptions, dimensions, areas, distances, reference to condition and necessary permissions for use and occupation and other details are given in good faith but should not be relied upon as statements or representations of fact. The text, photographs and plans are for guidance only and are not necessarily comprehensive. 3. No person in the employment of TW Gaze has any authority to make or give any representations or warranty whatever in relation to this property on behalf of TW Gaze, nor enter into any contract on behalf of the Vendor. 4. No responsibility can be accepted for any expenses incurred by intending purchasers in inspecting properties which have been sold, let or withdrawn. 5. It should not be assumed that the property has all necessary planning, building regulation or other consents. 6. TW Gaze have not tested any service, equipment or facilities.

While we endeavour to make our sales particulars accurate and reliable, if there is any point which is of particular importance to you, please contact this office and we will be pleased to check the information for you, particularly if contemplating travelling some distance to view the property.

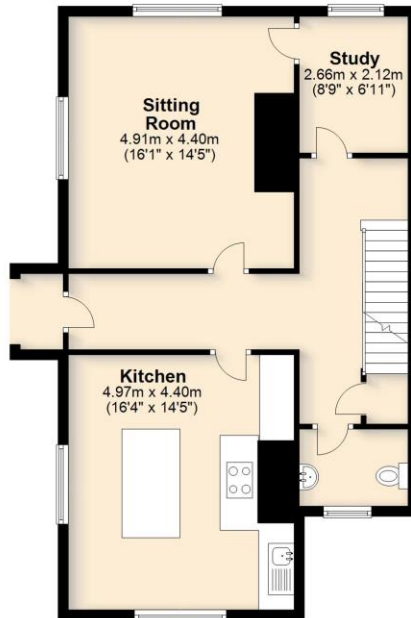
Basement

Approx. 78.2 sq. metres (841.3 sq. feet)



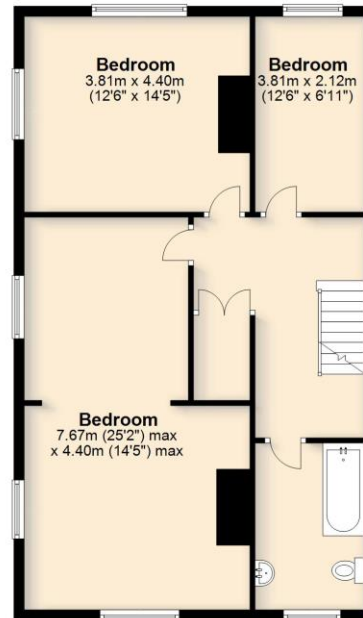
Ground Floor

Approx. 73.4 sq. metres (790.4 sq. feet)



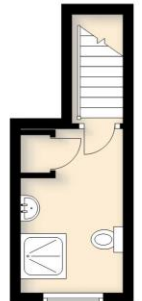
First Floor

Approx. 76.5 sq. metres (823.7 sq. feet)



Second Floor

Approx. 8.6 sq. metres (92.9 sq. feet)



Total area: approx. 236.7 sq. metres (2548.2 sq. feet)

For illustrative purposes only. NOT TO SCALE.

This plan is the copyright of TW Gaze and may not be altered, photographed, copied or reproduced without written consent.