

HUNTERS®

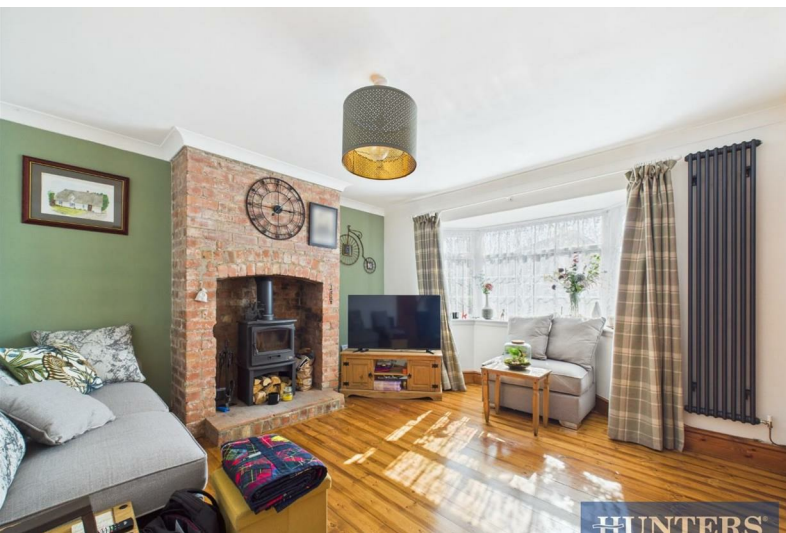
HERE TO GET *you* THERE



The Leases

Beverley, HU17 8LD

Offers In The Region Of £255,000



13 The Leases

Beverley, HU17 8LD

Offers In The Region Of £255,000



Entrance Hall

Wooden front door, tiled flooring, stairs to first floor landing, radiator and power points.

Lounge

UPVC double glazed bay window to the front aspect, coving, wooden flooring, log burner, radiator and power points.

Kitchen/ Diner

French doors onto garden, laminate tile style flooring, understairs W/C, range of wall and base units with roll top work surfaces, splash back, sink and drainer unit, integrated washing machine, integrated dishwasher, rangemaster range, space for fridge/freezer, vertical radiator, extractor hood and power points.

Downstairs W/C

Low flush WC and wash hand basin.

First Floor Landing

Loft access and power points.

Bedroom One

UPVC double glazed windows to the front aspect, radiator and power points.

Bedroom Two

UPVC double glazed window to the rear aspect, radiator and power points.

Bathroom

UPVC double glazed window to the rear aspect, tiled walls, laminate style flooring, double shower with mixer taps, low flush WC, wash hand basin with vanity unit, heated towel rail and extractor fan.

Garden

Mainly laid to lawn with plant and shrub borders, rear access, patio area and shed.

Parking

Driveway fits two vehicles.

Nestled in the charming area of The Leases, Beverley, this delightful mid-terrace house offers a perfect blend of comfort and convenience. With two well-proportioned bedrooms, this property is ideal for families or those seeking extra space. The inviting reception room provides a warm and welcoming atmosphere, perfect for relaxation or entertaining guests.

The house features a modern bathroom, ensuring that your daily routines are both comfortable and efficient. One of the standout features of this property is the off-street parking, a rare find in such a central location, allowing for easy access and peace of mind.

Situated in the heart of Beverley, residents will enjoy the vibrant community and the array of local amenities, including shops, cafes, and parks, all within easy reach. The area is well-connected, making it convenient for commuting to nearby towns and cities.

This property presents an excellent opportunity for those looking to settle in a desirable location, combining modern living with the charm of a historic town. Whether you are a first-time buyer or seeking a family home, this house is sure to impress. Don't miss the chance to make this lovely property your new home.



Road Map



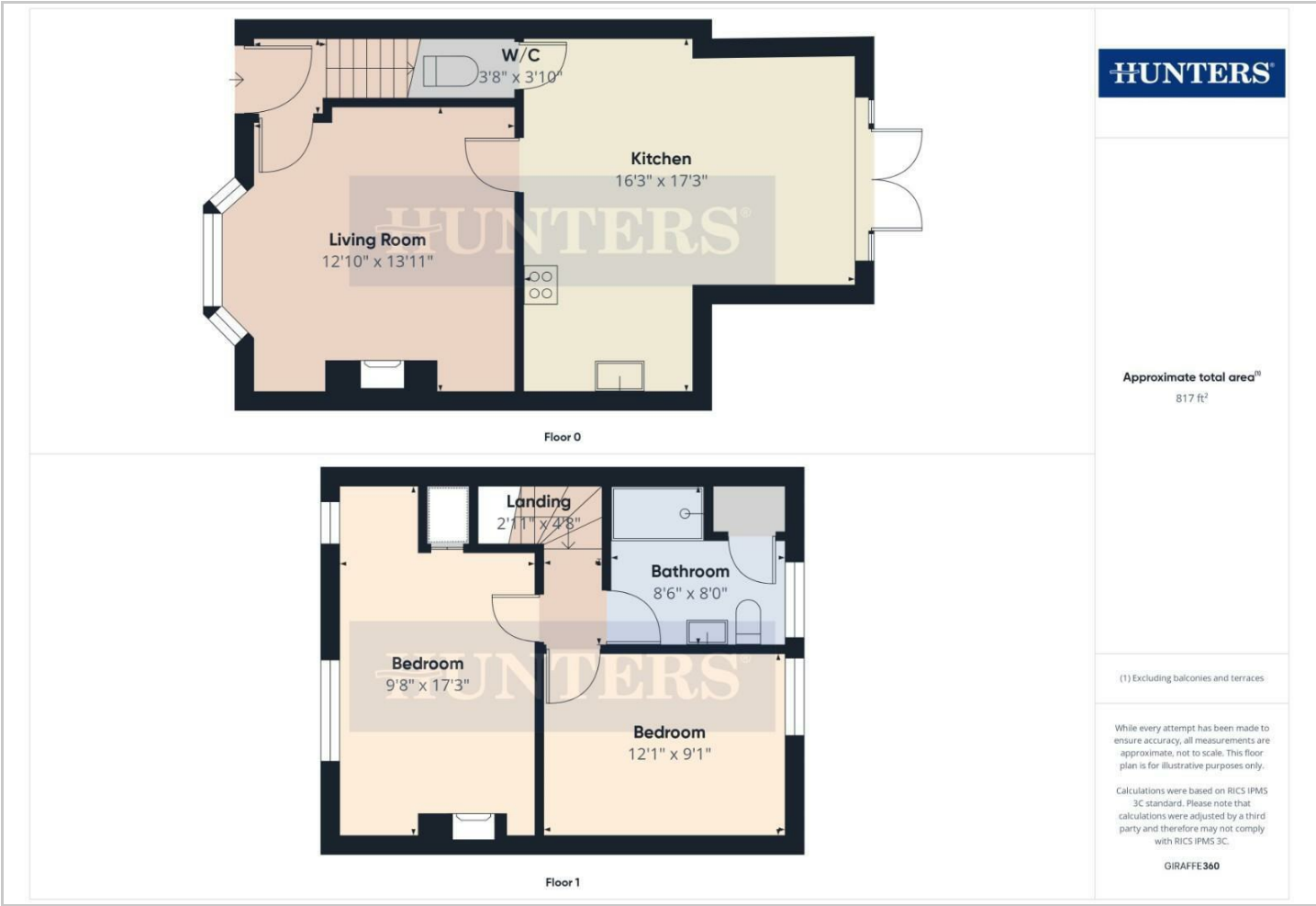
Hybrid Map



Terrain Map



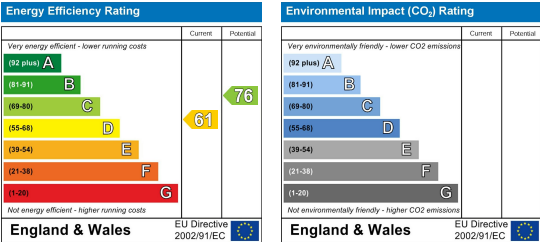
Floor Plan



Viewing

Please contact our Hunters Beverley Office on 01482 861411 if you wish to arrange a viewing appointment for this property or require further information.

Energy Efficiency Graph



These particulars are intended to give a fair and reliable description of the property but no responsibility for any inaccuracy or error can be accepted and do not constitute an offer or contract. We have not tested any services or appliances (including central heating if fitted) referred to in these particulars and the purchasers are advised to satisfy themselves as to the working order and condition. If a property is unoccupied at any time there may be reconnection charges for any switched off/disconnected or drained services or appliances - All measurements are approximate. **THINKING OF SELLING?** If you are thinking of selling your home or just curious to discover the value of your property, Hunters would be pleased to provide free, no obligation sales and marketing advice. Even if your home is outside the area covered by our local offices we can arrange a Market Appraisal through our national network of Hunters estate agents.