

HUNTERS®

HERE TO GET *you* THERE



HUNTERS®

Trinity Court, Trinity Court

Beverley, HU17 0EB

Offers In The Region Of £110,000



HUNTERS®

HUNTERS®

28A Trinity Court

Beverley, HU17 0EB

Offers In The Region Of £110,000



Entrance Hall

UPVC front door, double glazed window to the side aspect, stairs to first floor landing and power points.

Lounge

UPVC double glazed window to the front aspect, coving, electric storage heater and power points.

Kitchen

UPVC double glazed window to the rear aspect, Vinyl flooring, range of wall and base units with roll top work surfaces, tiled splash back, sink and drainer unit, plumbed for washing machine, space for fridge/freezer, electric cooking range, storage cupboard and power points.

First Floor Landing

Coving, loft access, electric storage heater and power points.

Bedroom One

UPVC double glazed window to the front aspect, coving and textured ceiling, fitted wardrobes and power points.

Bathroom

UPVC double glazed window to the rear aspect, textured ceilings, tiled walls, three piece bathroom suite comprising; bath with mixer taps and electric shower attachment, low flush WC, wash hand basin with pedestal and extractor fan.

Garden

Communal garden, mainly laid to lawn with plant and shrub borders.

Parking

Allocated for 1 car.

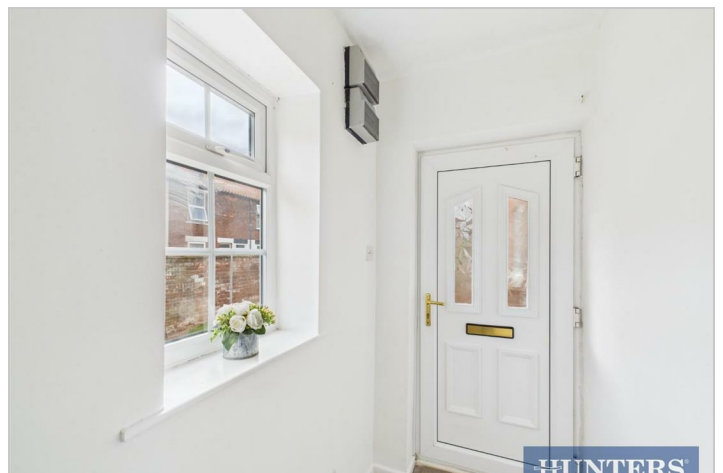
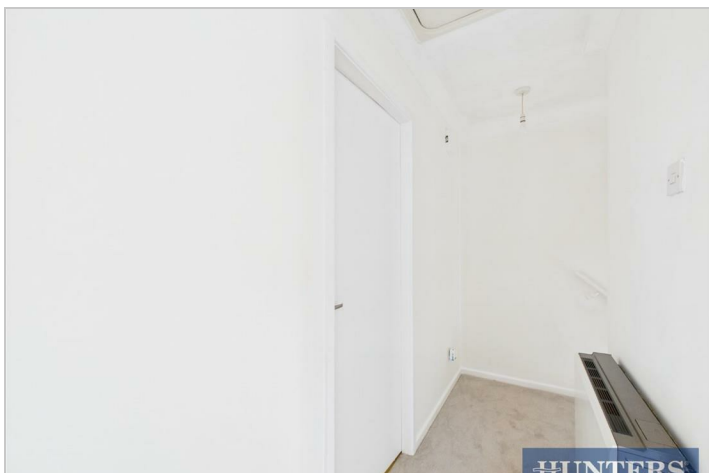
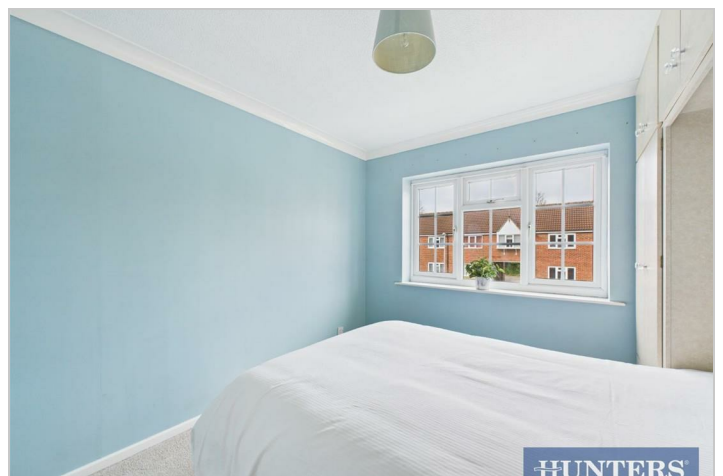
Lease Information

999 Year lease from January 1st 1985

Nestled in the charming heart of Beverley, this delightful apartment on Trinity Court just off Grovehill Road presents an excellent opportunity for both investors and those seeking a cosy home to downsize. The property features a well-appointed reception room, ideal for relaxation or entertaining guests, and a comfortable bedroom that offers a peaceful retreat. The bathroom is thoughtfully designed, ensuring convenience and comfort.

Beverley is renowned for its rich history and vibrant community, making this location particularly appealing. Residents will enjoy easy access to local amenities, including shops, cafes, and parks, all within a short stroll. The town's picturesque streets and historic architecture add to the allure of this property, making it a perfect choice for anyone looking to immerse themselves in the local culture.

Whether you are looking to invest in a rental property or seeking a charming place to call home, this apartment on Grovehill Road is a fantastic option. With its prime location and inviting features, it promises to be a wonderful living space or a sound investment for the future. Don't miss the chance to explore this gem in Beverley.



Road Map



Hybrid Map



Terrain Map



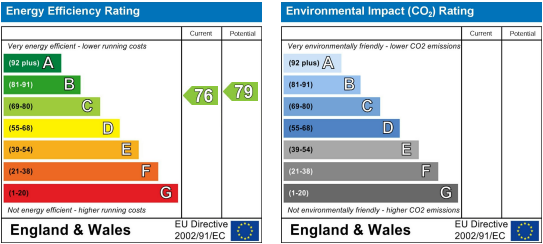
Floor Plan



Viewing

Please contact our Hunters Beverley Office on 01482 861411 if you wish to arrange a viewing appointment for this property or require further information.

Energy Efficiency Graph



These particulars are intended to give a fair and reliable description of the property but no responsibility for any inaccuracy or error can be accepted and do not constitute an offer or contract. We have not tested any services or appliances (including central heating if fitted) referred to in these particulars and the purchasers are advised to satisfy themselves as to the working order and condition. If a property is unoccupied at any time there may be reconnection charges for any switched off/disconnected or drained services or appliances - All measurements are approximate. **THINKING OF SELLING?** If you are thinking of selling your home or just curious to discover the value of your property, Hunters would be pleased to provide free, no obligation sales and marketing advice. Even if your home is outside the area covered by our local offices we can arrange a Market Appraisal through our national network of Hunters estate agents.