

HUNTERS®

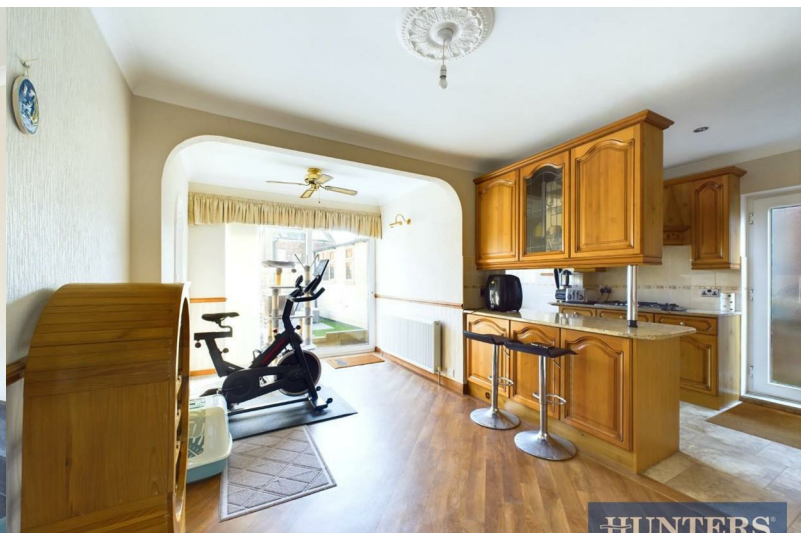
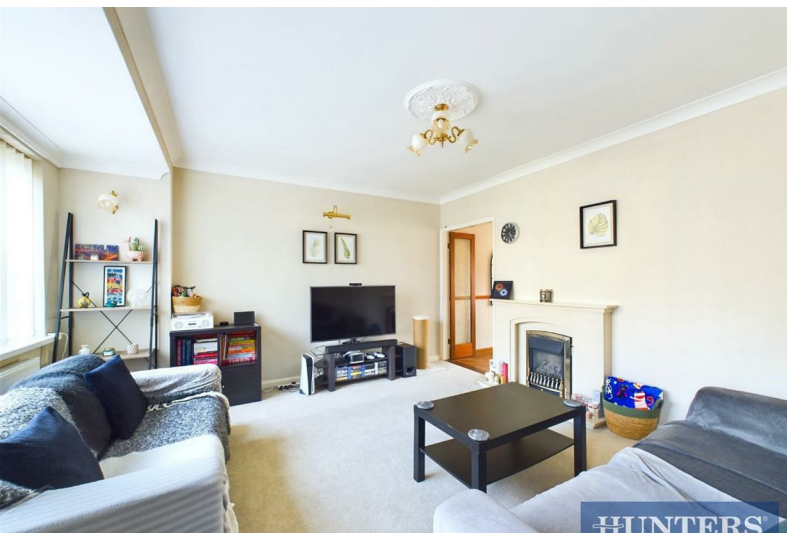
HERE TO GET *you* THERE



Lyndhurst Close

Beverley, HU17 0QG

Offers In The Region Of £200,000



11 Lyndhurst Close

Beverley, HU17 0QG

Offers In The Region Of £200,000



Entrance Hall

UPVC front door, textured ceiling, stairs to first floor landing, radiator and power points.

Lounge

UPVC double glazed window to the front aspect, coving, gas feature fireplace, radiator, TV point and power points.

Kitchen/ Dining Room

Sliding door onto garden, door to the side aspect, coving, ceiling rose, laminate laid wood style flooring, range of wall and base units with roll top work surfaces, tiled splash back, sink and drainer unit, integrated microwave, electric oven, gas hob, dado rail, radiator, extractor fan and power points.

First floor landing

UPVC double glazed window to the side aspect, textured ceiling, loft access, radiator and power points.

Bedroom One

UPVC double glazed window to the rear aspect, textured ceiling, radiator, TV point and power points.

Bedroom Two

UPVC double glazed window to the front aspect, coving, fitted wardrobes, radiator, TV point and power points.

Bedroom Three

UPVC double glazed window to the front aspect, coving and textured ceiling, fitted wardrobes, radiator and power points.

Bathroom

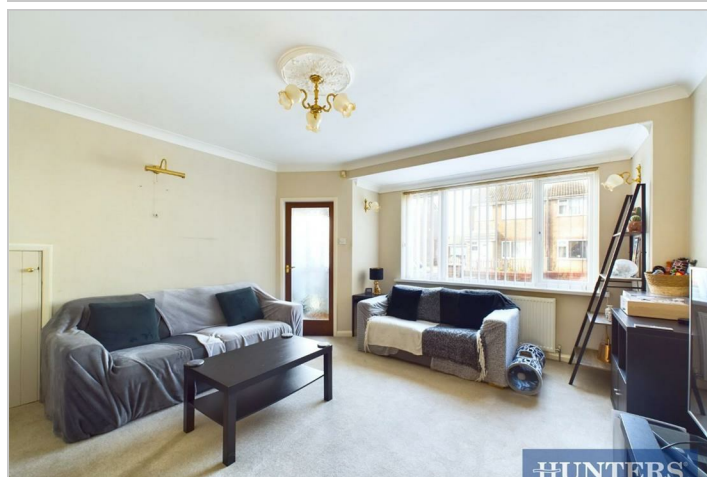
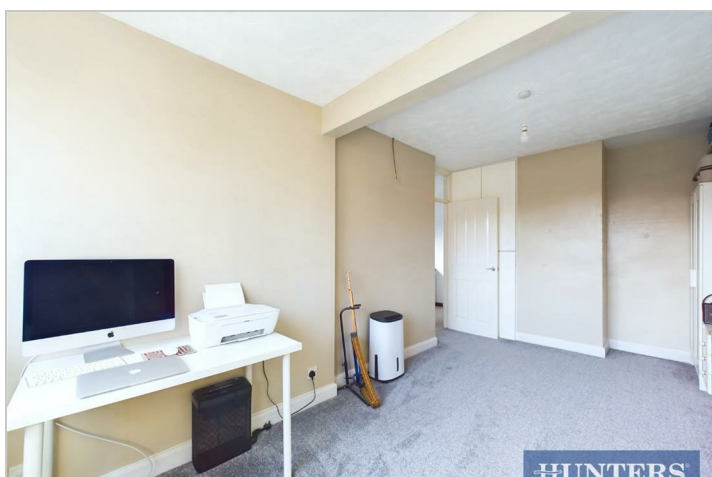
UPVC double glazed window to the rear aspect, coving, tiled walls, laminate laid style flooring, four piece bathroom suite comprising; bath with mixer taps, septic shower with mains shower, low flush WC, wash hand basin with vanity unit, radiator and extractor fan.

Garden

South Facing Low maintenance garden, raised sleepers, side access, shed with plumbing and power, outside tap, outside lighting and outside power point.

Welcome to Lyndhurst Close, Beverley - A charming location for this fabulous extended 3-bedroom house! This property boasts a spacious reception room, perfect for entertaining guests or relaxing with your family. With three cosy bedrooms, there's plenty of space for everyone to enjoy. The house features a well-maintained bathroom, ensuring your comfort and convenience.

Located in a sought-after area, this property offers a wonderful opportunity to create a warm and inviting home. Whether you're looking to settle down or invest in a promising property, this house is sure to meet your needs. Don't miss out on the chance to make Lyndhurst Close your new address - a place where comfort and style come together seamlessly.



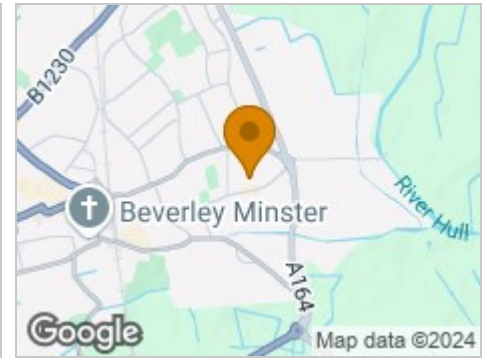
Road Map



Hybrid Map



Terrain Map



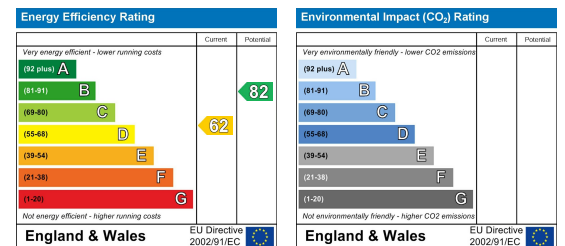
Floor Plan



Viewing

Please contact our Hunters Beverley Office on 01482 861411 if you wish to arrange a viewing appointment for this property or require further information.

Energy Efficiency Graph



These particulars are intended to give a fair and reliable description of the property but no responsibility for any inaccuracy or error can be accepted and do not constitute an offer or contract. We have not tested any services or appliances (including central heating if fitted) referred to in these particulars and the purchasers are advised to satisfy themselves as to the working order and condition. If a property is unoccupied at any time there may be reconnection charges for any switched off/disconnected or drained services or appliances - All measurements are approximate. **THINKING OF SELLING?** If you are thinking of selling your home or just curious to discover the value of your property, Hunters would be pleased to provide free, no obligation sales and marketing advice. Even if your home is outside the area covered by our local offices we can arrange a Market Appraisal through our national network of Hunters estate agents.