

HUNTERS®

HERE TO GET *you* THERE



Mill Drive

Leven, HU17 5NR

Offers In The Region Of £230,000



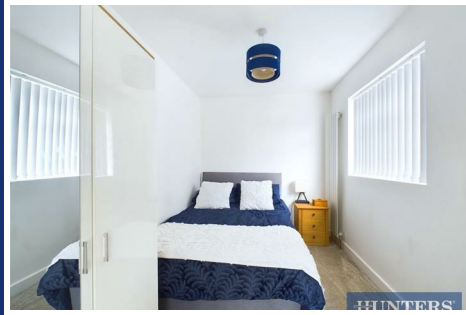
Council Tax: B



7 Mill Drive

Leven, HU17 5NR

Offers In The Region Of £230,000



Entrance Hall

UPVC front door, UPVC window to the front aspect, laminate laid wood style flooring, fuse board, radiator, telephone point and power points.

Inner Hall

Laminate laid wood style flooring, fitted cupboard and loft access with ladder.

Lounge

UPVC double glazed window to the front aspect, laminate laid wood style flooring, feature log burner fireplace, TV point and power points.

Kitchen

UPVC double glazed French doors to the rear aspect, laminate laid wood style flooring, range of wall and base units with work surfaces, tiled splash back, breakfast bar feature, sink and drainer unit, plumbed for washing machine, space for fridge/freezer, electric double oven, gas hob, extractor hood, extractor fan and power points.

Bedroom One

UPVC double glazed French doors onto garden, radiator, TV point and power points.

Bedroom Two

UPVC double glazed window to the side aspect, radiator and power points.

Wet Room

Electric shower, low flush WC, wash hand basin with vanity unit, radiator and extractor fan.

Garden

Mainly laid to lawn with plant and shrub borders, side access, patio area, outside tap and outside lighting.

Tandem Garage

Tandem garage with up and over door.

Parking

Allocated parking for two vehicles.

A semi-detached bungalow located on Mill Drive in the sought-after area of Leven, East Yorkshire. This beautifully finished property boasts a tranquil setting, perfect for those seeking a peaceful retreat.

Upon entering, you are greeted by a cosy reception room, ideal for relaxing or entertaining guests. The bungalow features two lovely bedrooms, offering comfortable living spaces for you and your family. With a well-appointed wet room, convenience is at your fingertips.

The allure of this property lies not only in its interior but also in its surroundings. The tranquil scenery that envelops the bungalow provides a serene backdrop for everyday life.

Don't miss the opportunity to make this charming bungalow your new home. Embrace the peaceful lifestyle that this property offers and create lasting memories in this idyllic setting. Contact us today to arrange a viewing and experience the beauty of Mill Drive for yourself.



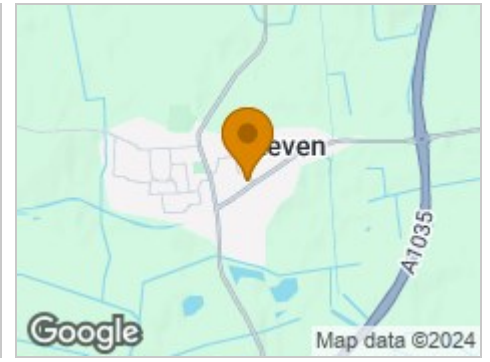
Road Map



Hybrid Map



Terrain Map



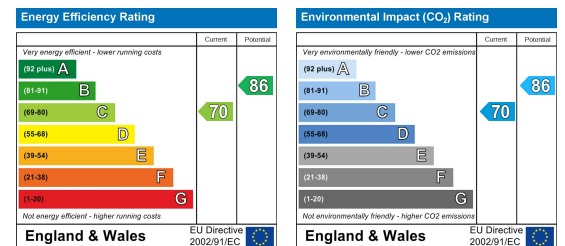
Floor Plan



Viewing

Please contact our Hunters Beverley Office on 01482 861411 if you wish to arrange a viewing appointment for this property or require further information.

Energy Efficiency Graph



These particulars are intended to give a fair and reliable description of the property but no responsibility for any inaccuracy or error can be accepted and do not constitute an offer or contract. We have not tested any services or appliances (including central heating if fitted) referred to in these particulars and the purchasers are advised to satisfy themselves as to the working order and condition. If a property is unoccupied at any time there may be reconnection charges for any switched off/disconnected or drained services or appliances - All measurements are approximate. **THINKING OF SELLING?** If you are thinking of selling your home or just curious to discover the value of your property, Hunters would be pleased to provide free, no obligation sales and marketing advice. Even if your home is outside the area covered by our local offices we can arrange a Market Appraisal through our national network of Hunters estate agents.