

HUNTERS®

HERE TO GET *you* THERE



Neville Avenue

Beverley, HU17 0HS

Offers In The Region Of £169,950



3



1



2



Council Tax: A



HUNTERS



HUNTERS

17 Neville Avenue

Beverley, HU17 0HS

Offers In The Region Of £169,950



Entrance Hall

Wooden glazed front door, stairs to first floor landing and power points.

Downstairs Cloakroom

UPVC double glazed window to the side aspect, side entrance with large store room and low flush WC.

Lounge

UPVC double glazed windows to the front and side aspects, open feature fireplace, dado rail, TV point and power points.

Dining Room

UPVC double glazed window to the front aspect, laminate laid wood style flooring, radiator and power points.

Kitchen

UPVC double glazed window to the rear aspect, laminate laid wood style flooring, range of wall and base units with roll top work surfaces, tiled splash backs, sink and drainer unit, plumbed for washing machine, radiator and power points.

First Floor Landing

UPVC double glazed window to the rear aspect, loft access, airing cupboard housing boiler, radiator views of the historical Minster and power points.

Bedroom One

UPVC double glazed window to the front aspect, fitted cupboards, radiator and power points.

Bedroom Two

UPVC double glazed window to the front aspect, storage cupboard, dado rail, radiator, TV point and power points.

Bedroom Three

UPVC double glazed window to the rear aspect, dado rail, radiator and power points.

Shower Room

UPVC double glazed window to the rear aspect, part tiled walls, shower cubicle with mains shower, low flush WC, wash hand basin with pedestal, heated towel rail and extractor fan.

Garden

Mainly laid to lawn with plant and shrub borders, side access, patio area and outside tap.

Garage

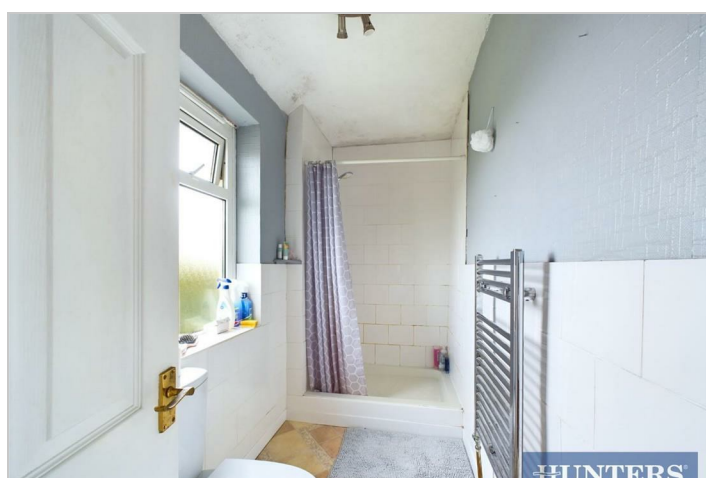
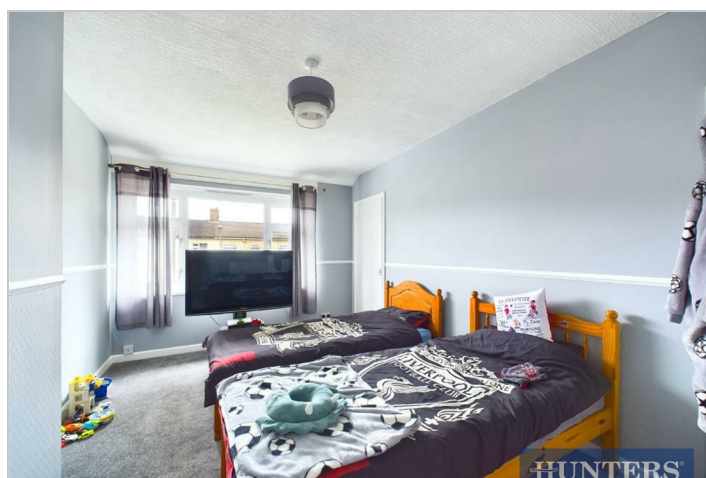
Up and over door.

A charming property that offers the perfect opportunity for a family project! This delightful house boasts two reception rooms, ideal for entertaining guests or simply relaxing with your loved ones. With three spacious bedrooms, there is plenty of room for the whole family to enjoy.

Parking is a breeze with space for up to three vehicles, making trips out or hosting visitors a stress-free experience.

One of the highlights of this property is the generous garden space, providing endless possibilities for outdoor activities, gardening, or simply basking in the fresh air. Imagine the joy of creating your own outdoor oasis right at your doorstep!

Don't miss out on this fantastic opportunity to turn this house into your dream family home. With its prime location in Beverley and all these wonderful features, this property is sure to be a gem waiting to be discovered.



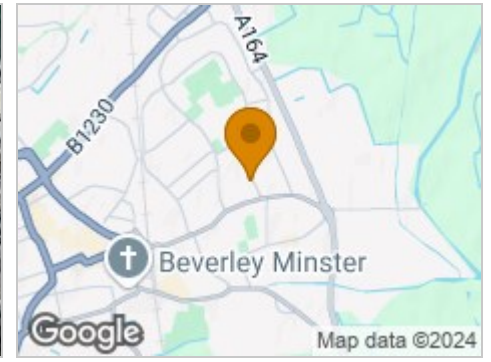
Road Map



Hybrid Map



Terrain Map



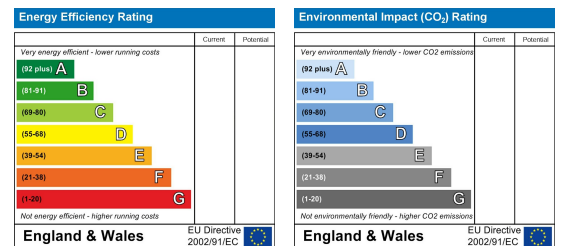
Floor Plan



Viewing

Please contact our Hunters Beverley Office on 01482 861411 if you wish to arrange a viewing appointment for this property or require further information.

Energy Efficiency Graph



These particulars are intended to give a fair and reliable description of the property but no responsibility for any inaccuracy or error can be accepted and do not constitute an offer or contract. We have not tested any services or appliances (including central heating if fitted) referred to in these particulars and the purchasers are advised to satisfy themselves as to the working order and condition. If a property is unoccupied at any time there may be reconnection charges for any switched off/disconnected or drained services or appliances - All measurements are approximate. **THINKING OF SELLING?** If you are thinking of selling your home or just curious to discover the value of your property, Hunters would be pleased to provide free, no obligation sales and marketing advice. Even if your home is outside the area covered by our local offices we can arrange a Market Appraisal through our national network of Hunters estate agents.