

HUNTERS[®]

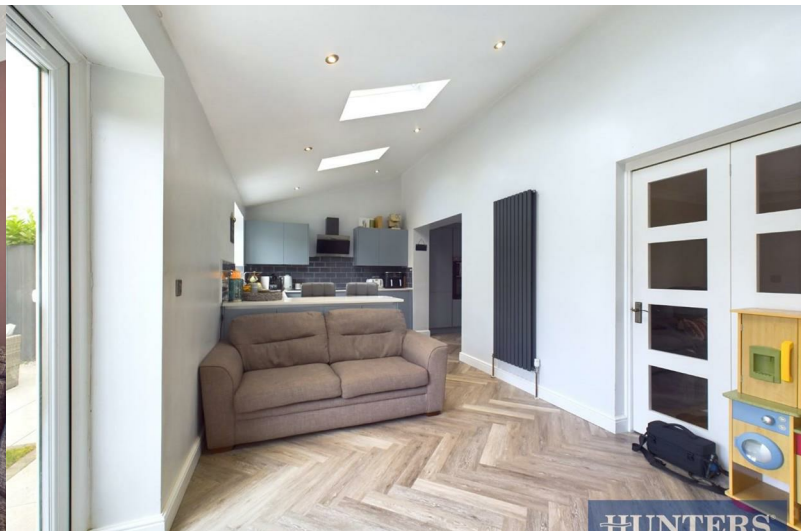
HERE TO GET *you* THERE



Norwich Court

Beverley, HU17 8UJ

Offers In The Region Of £285,000



5 Norwich Court

Beverley, HU17 8UJ

Offers In The Region Of £285,000



Downstairs Cloakroom

Herringbone flooring, low flush WC, wash hand basin with vanity unit and under stairs cupboard.

Lounge

UPVC double glazed window to the front aspect, coving and textured ceiling, oak flooring, radiator, TV point and power points.

Kitchen/Diner/Family Room

French doors onto garden, Herringbone flooring, range of wall and base units with resin work surfaces, tiled splash back, breakfast bar, sink and drainer unit, integrated washing machine, integrated dish washer, space, integrated fridge/freezer, electric oven, induction hob, extractor fan, vertical radiator and power points.

Bedroom One

UPVC double glazed window to the front aspect, textured ceiling, radiator and power points.

Bedroom Two

UPVC double glazed window to the front

aspect, textured ceiling, fitted wardrobes, fitted cupboard, radiator and power points.

Bedroom Three

UPVC double glazed window to the rear aspect, textured ceiling, radiator and power points.

Bathroom

UPVC double glazed opaque window to the rear aspect, tiled walls, vinyl flooring, panel enclosed bath with mixer taps and shower attachment, low flush WC, wash hand basin with vanity unit, heated towel rail and extractor fan.

Garden

Mainly laid to lawn with gravel borders, side access and porcelain patio area.

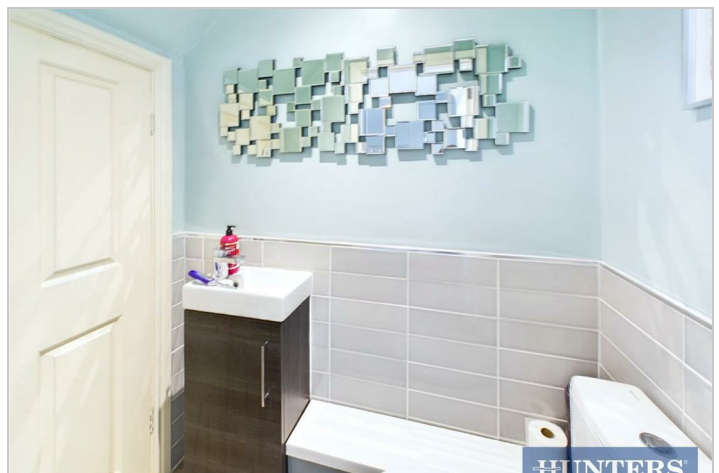
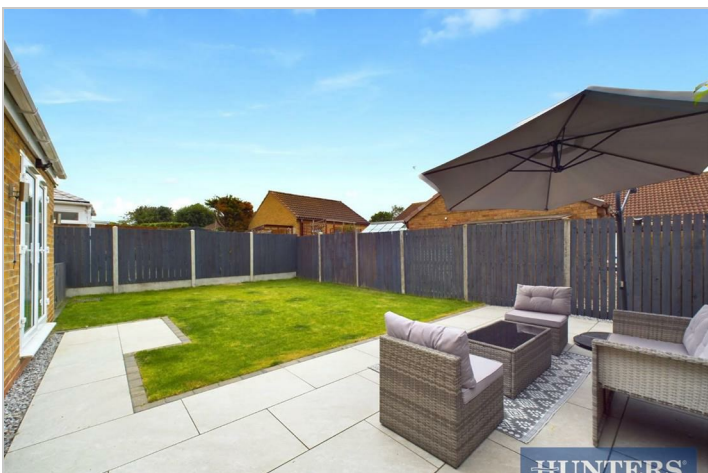
Garage

Up and over door with power and lighting.

A stunning detached house that exudes charm and elegance. This beautiful property boasts a spacious and light interior, perfect for creating a warm and inviting atmosphere. With 1 reception room, 3 bedrooms, and 1 bathroom, this house offers ample space for comfortable living.

Situated in a desirable location, this property features an open garden, ideal for enjoying the outdoors and hosting gatherings with family and friends. Whether you're looking to relax in a tranquil setting or entertain guests in style, this house provides the perfect backdrop for creating lasting memories.

Don't miss the opportunity to make this house your home and experience the best of Beverley living. Embrace the charm of Norwich Court and enjoy the comfort and beauty it has to offer.



Road Map



Hybrid Map



Terrain Map



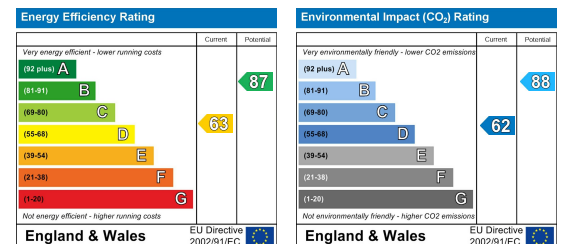
Floor Plan



Viewing

Please contact our Hunters Beverley Office on 01482 861411 if you wish to arrange a viewing appointment for this property or require further information.

Energy Efficiency Graph



These particulars are intended to give a fair and reliable description of the property but no responsibility for any inaccuracy or error can be accepted and do not constitute an offer or contract. We have not tested any services or appliances (including central heating if fitted) referred to in these particulars and the purchasers are advised to satisfy themselves as to the working order and condition. If a property is unoccupied at any time there may be reconnection charges for any switched off/disconnected or drained services or appliances - All measurements are approximate. **THINKING OF SELLING?** If you are thinking of selling your home or just curious to discover the value of your property, Hunters would be pleased to provide free, no obligation sales and marketing advice. Even if your home is outside the area covered by our local offices we can arrange a Market Appraisal through our national network of Hunters estate agents.