

# HUNTERS®

HERE TO GET *you* THERE



## Warton Drive

Woodmansey, HU17 0FB

Asking Price £480,000



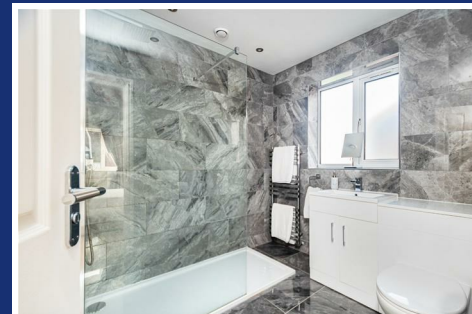
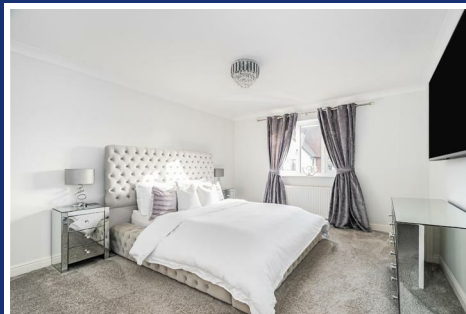
Council Tax: F



# 11 Warton Drive

Woodmansey, HU17 0FB

Asking Price £480,000



## ENTRANCE HALL

Composite front door, kardean flooring coving, radiator, power points, stairs to first floor landing.

## DOWNSTAIRS TOILET

Coving, Heated Towel Rail, Kardean flooring, Low flush wc, wash hand basin with vanity unit , extractor fan.

## LOUNGE

Bay window to the front aspect, radiator, TV point and power points.

## STUDY

UPVC D/G Bay window to front , coving, Radiator, power points, tv point .

## KITCHEN

UPVC D/G Window to rear, tiled floor, range of wall and base units with roll top work surfaces, kitchen island , tiled splash back, integrated dishwasher, sink and drainer unit, integrated full size fridge and full size freezer, extractor fan, power points.

## DINING ROOM

French doors onto the rear garden, radiator and power points.

## UTILITY ROOM

Composite door to rear aspect, tiled floor, range of wall and base units with roll top work surfaces, Quartz work tops, space for washing machine, space for tumble dryer, sink and drainer unit, power points, radiator.

## FIRST FLOOR LANDING

radiator, airing cover, loft access with pull down ladder, power points.

## BEDROOM 1

UPVC D/G window to front, radiator, telephone point, tv point, power points.

## ENSUIT TO BEDROOM 1

UPVC D/G window to side, aspect opaque, tiled floor, fully tiled shower cubicle with rainfall mixer shower , low flush w/c wash hand basin with vanity unit , heated towel rail, tiled walls, extractor fan.

## BEDROOM 2

UPVC D/G Window to front, coving, radiator, tv point, power points.

## ENSUIT TO BEDROOM 2

UPVC D/G window to front, wash hand basin, separate shower, tiled floor, heated towel rail.

## BEDROOM 3

UPVC D/G window to rear, coving, radiator, power points .

## BEDROOM 4

UPVC D/G window to rear aspect, radiator, power points.

## MAIN HOUSE BATHROOM

UPVC D/G opaque window , jacuzzi bath, radiator, tiled floor, low flush wc, wash hand basin pedestal, extractor fan.

## GARAGE

UPVC window , up and over door, power and lighting.

## REAR GARDEN

low maintenance garden, side and rear access, artificial grass patio area, outside tap, porcelain tiled, power points.

## Material Information - Hunters Beverley

Tenure Type; Freehold  
Council Tax Banding; F

Nestled in a peaceful cul de sac location, this modern 4-bedroom spacious home epitomizes comfort and contemporary living it offers a warm and inviting atmosphere for you and your family to call home.

The property offers four generously-sized bedrooms, each carefully designed with comfort in mind. The master suite is a true sanctuary, complete with a private en-suite bathroom. With its cosy and modern design, ample space, and well-thought-out details, this 4-bedroom house provides the perfect backdrop for a comfortable and stylish lifestyle. It offers a place where you can create lasting memories and enjoy the comforts of home while staying connected to the modern world.

Nestled just beyond the bustling streets of the historic market town of Beverley, you'll discover a tranquil village that feels like a serene escape to call home. The property itself briefly comprises; Entrance hall, lounge, study/treatment room, downstairs WC, dining room, kitchen/breakfast room, utility, four double bedrooms, two ensuites, family bathroom, garage and private rear garden.



Road Map



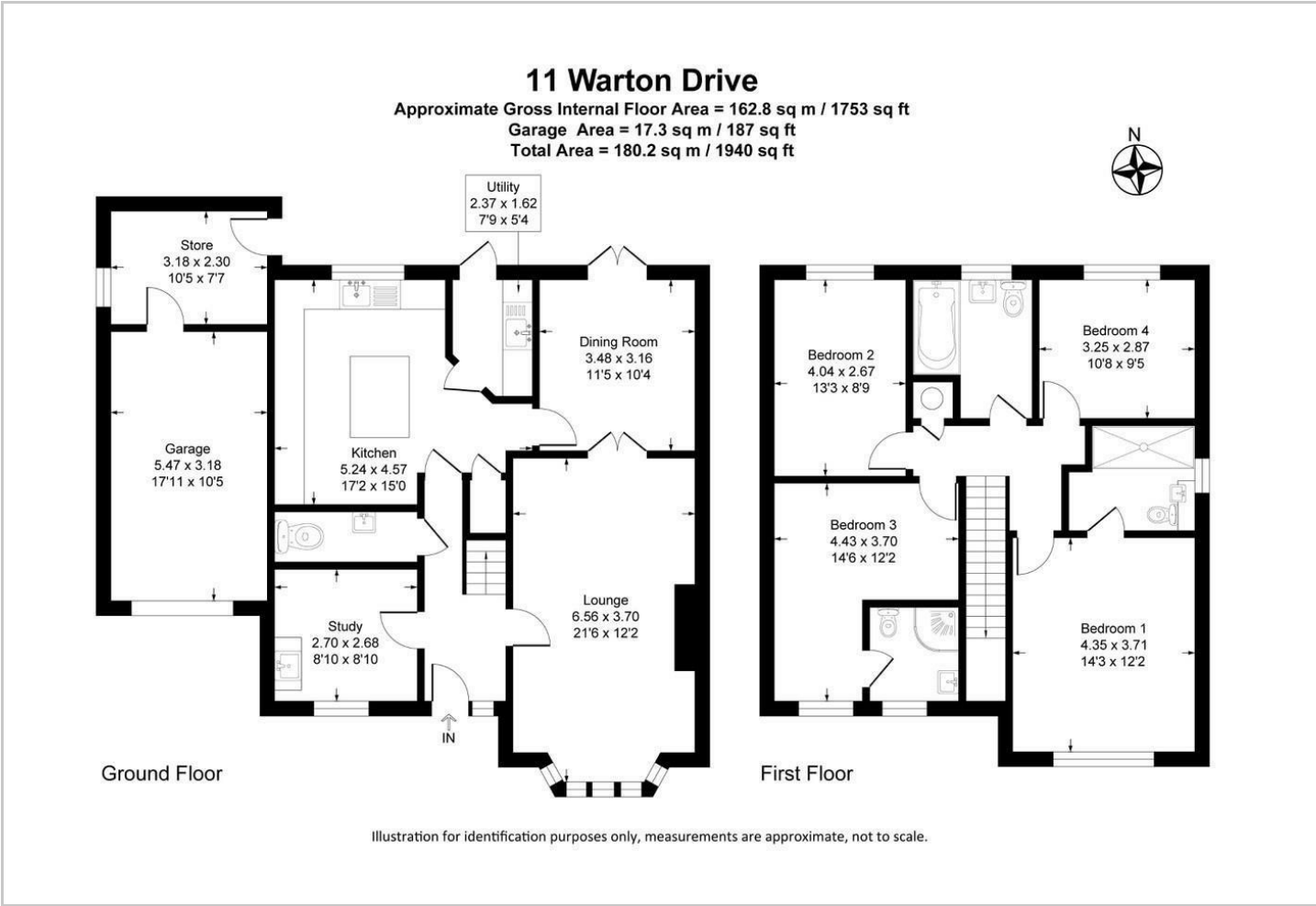
Hybrid Map



Terrain Map



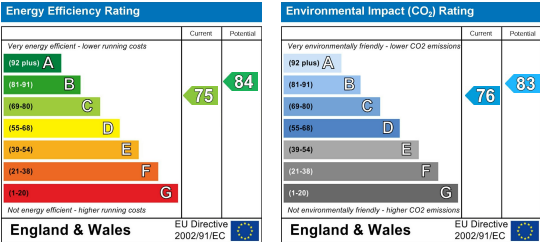
Floor Plan



Viewing

Please contact our Hunters Beverley Office on 01482 861411 if you wish to arrange a viewing appointment for this property or require further information.

Energy Efficiency Graph



These particulars are intended to give a fair and reliable description of the property but no responsibility for any inaccuracy or error can be accepted and do not constitute an offer or contract. We have not tested any services or appliances (including central heating if fitted) referred to in these particulars and the purchasers are advised to satisfy themselves as to the working order and condition. If a property is unoccupied at any time there may be reconnection charges for any switched off/disconnected or drained services or appliances - All measurements are approximate. **THINKING OF SELLING?** If you are thinking of selling your home or just curious to discover the value of your property, Hunters would be pleased to provide free, no obligation sales and marketing advice. Even if your home is outside the area covered by our local offices we can arrange a Market Appraisal through our national network of Hunters estate agents.