

Kennedys'

01737 817718

kennedys-ipa.co.uk
@kennedysipa

, Warren Drive
Kingswood
KT20 6PY

We are delighted to offer to the Lettingsmarket this magnificent residence situated in one of the most prestigious locations in Kingswood. The property offers approximately 7,400 sq ft of luxury accommodation over three floors. Pets considered available from 22/07/2025

£14,500 Per Month



6



3



6



?



- Large kitchen/living/family room
- Six bedroom property
- Three receptions rooms
- Unfurnished

- Approx 7,400 sq ft
- Cinema/media Room
- Available July 2025
- Set in one of Kingswood's prime locations



PROPERTY DESCRIPTION

Full Description.

An Exceptional Kingswood Residence | 6 Bedrooms | Available July 2025 | Pets Considered |
£14,500 pcm | Unfurnished

We're excited to bring to market this extraordinary residence in one of Kingswood's most prestigious private roads. Offering approximately 7,400 sq ft of versatile living space across three floors, this is luxury living at its finest — and it's available to let from the 22nd of July 2025.

This beautifully designed home features six spacious bedrooms, ideal for families seeking flexible and high-end living. On the ground floor, you'll find three elegant reception rooms, a cloakroom, and a stunning bespoke kitchen/breakfast/family room complete with granite and solid wood worktops, premium appliances, and a separate utility room. Underfloor heating runs throughout the ground level, including the integral double garage.

The first floor offers four generously sized double bedrooms, each with its own en-suite, along with a luxurious dressing room in the master suite. The second floor provides two further bedrooms, one with an en-suite, as well as a cinema/media room and gym — offering a variety of potential uses depending on your lifestyle.

Outside, the property is approached via a gated in-and-out driveway, surrounded by mature borders and a well-kept front lawn. To the rear, the landscaped garden features a large patio area, ideal for entertaining or relaxing in complete privacy.









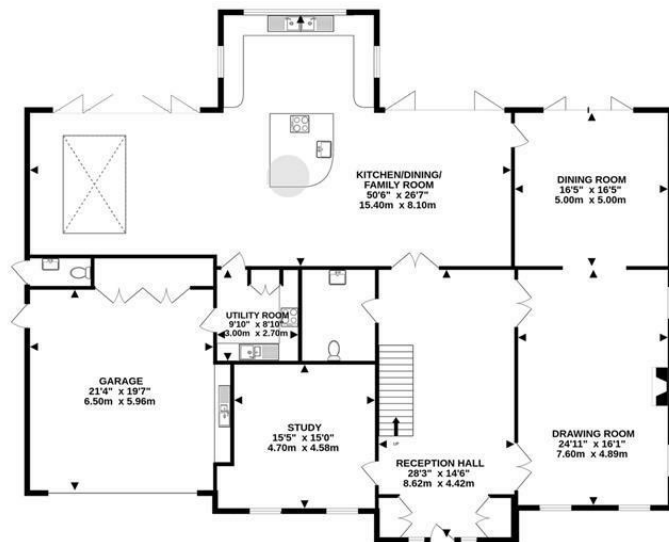
PROPERTY DESCRIPTION

Perfectly located in the heart of Kingswood, this home offers easy access to the village's cafés, shops, restaurants, and train station with direct services to London. Excellent schools, golf courses, and road links via the M25 to Gatwick and Heathrow airports are all within close reach.

This pet-friendly property is offered unfurnished and will be available from 22 July 2025. The rent is £14,500 per calendar month.

Properties of this quality rarely become available. To arrange a viewing or for more details, please contact our Lettings Team on 01737 817718.

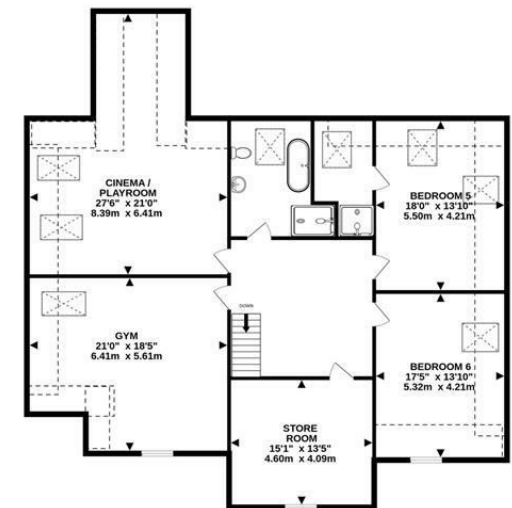
A large, stylized white signature or logo on a dark background. The signature is fluid and cursive, starting with a large 'C' and ending with a long, sweeping tail.



GROUND FLOOR



1ST FLOOR



2ND FLOOR

TOTAL FLOOR AREA : 7364sq.ft. (684.1 sq.m.) approx.
 Measurements are approximate. Not to scale. Illustrative purposes only
 Made with Metropix ©2025

Energy Efficiency Rating		
	Current	Potential
Very energy efficient - lower running costs		
(92 plus) A		
(81-91) B	87	88
(69-80) C		
(55-68) D		
(39-54) E		
(21-38) F		
(1-20) G		
Not energy efficient - higher running costs		
England & Wales	EU Directive 2002/91/EC	

, Warren Drive

If you would like to arrange a viewing, please call a member of the Kennedys sales team on 01737 817718

TENURE:
 EPC RATING: B
 COUNCIL:
 TAX BAND:

These particulars, whilst believed to be accurate are set out as a general guide only for guidance and do not constitute any part of an offer or contract. Intending purchasers should not rely on them as statements of representation of fact, but must satisfy themselves by inspection or otherwise as to their accuracy. No person in Kennedys' has the authority to make or give any representation or warranty in respect of the property.



01737 817718

kennedys-ipa.co.uk [@kennedysipa](https://www.instagram.com/kennedysipa) info@kennedys-ipa.co.uk

48 Walton Street, Walton on the Hill,
KT20 7RT