



£550,000

NORTH BARN & WEST COTTAGE, MAIN ROAD, AISLABY, WHITBY, YO21 1SW

- Four Bedroom Barn Conversion
- Attached Two Bedroom Annex
- Whitby Village Location

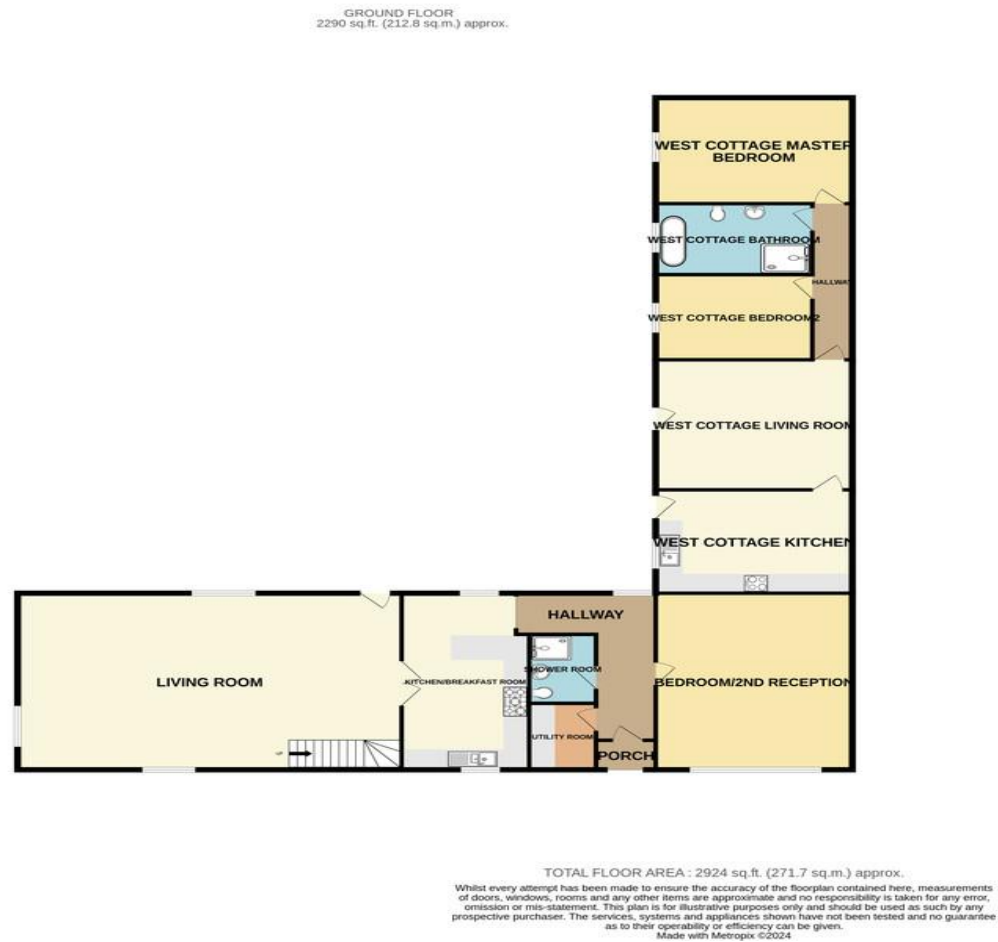
A RARE AND FANTASTIC OPPORTUNITY TO PURCHASE THIS STUNNING FOUR BEDROOM BARN CONVERSION WITH ATTACHED TWO BEDROOM ANNEX COTTAGE. THE PERFECT MULTI GENERATION LIVING PROPERTY, SITUATED IN THIS STUNNING NORTH YORKSHIRE VILLAGE ON THE FRINGE OF THE BEAUTIFUL TOWN OF WHITBY.



TIPPLE UNDERWOOD ESTATE AGENTS
3 Coldyhill Lane, Scarborough, North Yorkshire, YO12 6SF

CONTACT
www.tippleunderwood.co.uk
01723 350299
mail@tippleunderwood.co.uk

Agents Note: Whilst every care has been taken to prepare these sales particulars, they are for guidance purposes only. All measurements are approximate and for general guidance purposes only and whilst every care has been taken to ensure their accuracy, they should not be relied upon and potential buyers are advised to recheck the measurements.



Property Description

North Barn is a modern four bedroom barn conversion, with beautiful well-appointed rooms, modern fittings, exposed beams, stone floors, two bathrooms, 32ft reception room and some sea views. West cottage is attached at the rear in a courtyard setting, with two double bedrooms, modern four piece bathroom, dining kitchen and separate living room. Both properties enjoy low maintenance grounds and three parking spaces at the front of north barn.



NORTH BARN

GROUND FLOOR HALLWAY

MASTER BEDROOM/RECEPTION 2
19' 7" x 16' 7" (5.97m x 5.05m)

UTILITY ROOM
7' 5" x 5' 7" (2.26m x 1.7m)

SHOWER ROOM
7' 8" x 5' 8" (2.34m x 1.73m)

KITCHEN/BREAKFAST ROOM
19' 4" x 10' 9" (5.89m x 3.28m)

LIVING ROOM
32' 4" x 19' 5" (9.86m x 5.92m)

FIRST FLOOR

LANDING

BEDROOM
13' 4" x 11' 3" (4.06m x 3.43m)

BEDROOM
13' 1" x 10' 4" (3.99m x 3.15m)

BEDROOM
9' 8" x 7' 9" (2.95m x 2.36m)

BATHROOM
11' x 7' 6" (3.35m x 2.29m)

OUTSIDE

GARDEN

PARKING

COVERED PARKING

WEST COTTAGE

GROUND FLOOR

KITCHEN/DINER
16' 7" x 11' 6" (5.05m x 3.51m)

LIVING ROOM
16' 7" x 14' 5" (5.05m x 4.39m)

HALLWAY

BEDROOM
16' 7" x 11' 9" (5.05m x 3.58m)

BEDROOM
12' 9" x 9' 6" (3.89m x 2.9m)

BATHROOM
12' 9" x 7' 1" (3.89m x 2.16m)

OUTSIDE