



TOTAL FLOOR AREA: 1178 sq. ft. (109.4 sq.m.) approx.
These plans are intended to be used as a guide only. They are not intended to be used as a basis for any legal proceedings. The plans are not intended to be used as a basis for any legal proceedings. The plans are not intended to be used as a basis for any legal proceedings. The plans are not intended to be used as a basis for any legal proceedings.



£225,000

15 THE INTAKE, OSGOBY, SCARBOROUGH, YO1 1 3PT

- Four Bedrooms
- Garage And Garden
- Distant Sea Views
- Master En Suite

A WELL PRESENTED FOUR BEDROOM MODERN TOWN HOUSE WITH GARAGE, OFF STREET PARKING, AND BALCONY ALSO DISTANT SEA AND RURAL VIEWS. LOCATED IN THIS POPULAR LOCATION THIS LOVELY HOME OFFERS THE POTENTIAL PURCHASER A PROPERTY THEY CAN MOVE STRAIGHT INTO.



TIPPLE UNDERWOOD ESTATE AGENTS
 3 Coldyhill Lane, Scarborough, North Yorkshire, YO12 6SF

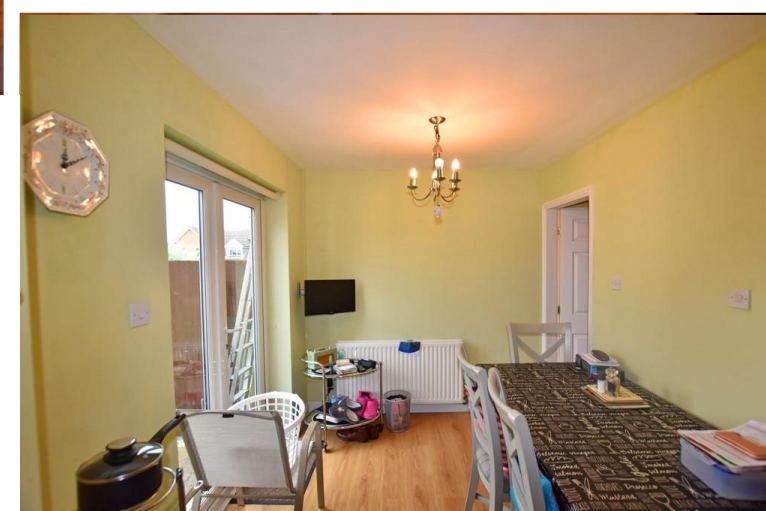
CONTACT
www.tippleunderwood.co.uk
 01723 350299
mail@tippleunderwood.co.uk

Agents Note: Whilst every care has been taken to prepare these sales particulars, they are for guidance purposes only. All measurements are approximate and for general guidance purposes only and whilst every care has been taken to ensure their accuracy, they should not be relied upon and potential buyers are advised to recheck the measurements.



Property Description

The property when briefly described comprises, entrance lobby, bay fronted lounge, open plan kitchen diner spanning the rear of the property, cloakroom, and integral garage on the ground floor. On the first floor are four bedrooms master with en suite shower room, fourth bedroom has a front facing balcony and a house bathroom. To the rear of the property is an enclosed garden mainly laid to lawn with paved paths and timber deck. At the front is a low maintenance garden and driveway.



GROUND FLOOR

LOBBY

LOUNGE

23' x 11' 3" (7.01m x 3.43m)

DINING AREA

9' 8" x 7' 6" (2.95m x 2.29m)

KITCHEN AREA

11' 6" x 9' 8" (3.51m x 2.95m)

CLOAKROOM

FIRST FLOOR

LANDING

MASTER BEDROOM

18' 7" x 10' 8" (5.66m x 3.25m)

ENSUITE

BEDROOM

11' 5" x 7' 9" (3.48m x 2.36m)

BEDROOM

7' 9" x 7' 7" (2.36m x 2.31m)

BALCONY

BEDROOM

8' 8" x 7' 3" (2.64m x 2.21m)

OUTSIDE

INTEGRAL GARAGE

19' 7" x 8' 1" (5.97m x 2.46m)

GARDEN