

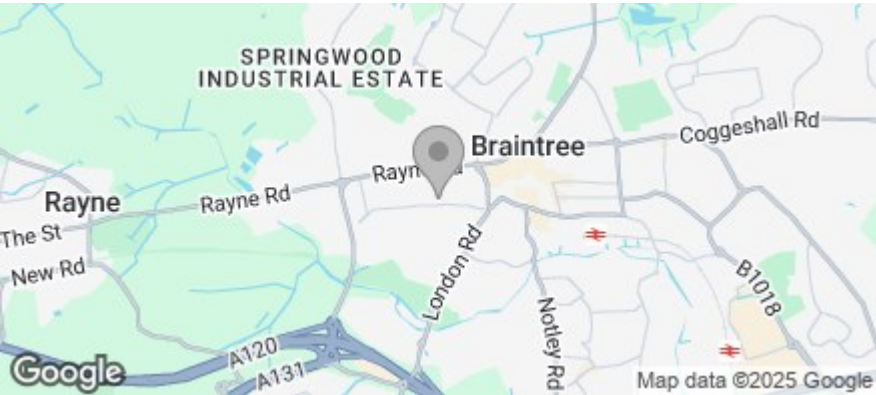
4 HUNNABLE ROAD, BRAINTREE CM7

£1,550 PER MONTH

3 Bedrooms | 2 Bathrooms | 2 Receptions

Floor Plan

Area Map



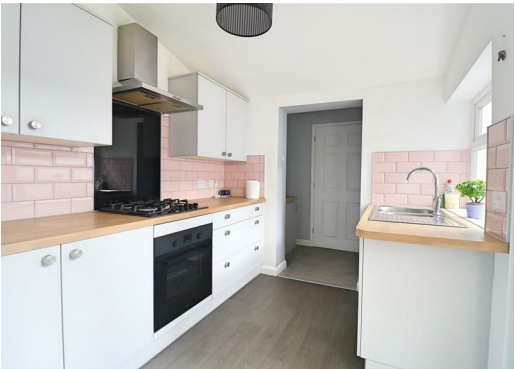
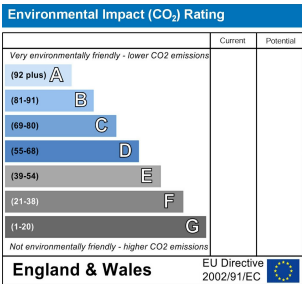
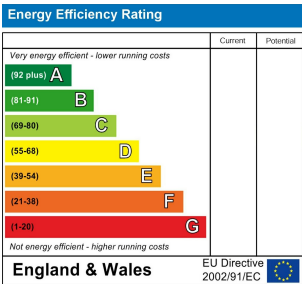
Accommodation

- THREE BEDROOMS
- TWO RECEPTION ROOMS
- TWO BATHROOMS
- WALKING DISTANCE TO TOWN CENTRE & STATION
- EASY ACCESS TO A120
- GAS CENTRAL HEATING

Viewing

Please contact us on 01376 386555 if you wish to arrange a viewing appointment for this property, or require further information.

Energy Efficiency Graph



Phone: 01376 386555
Email: info@branocsestates.co.uk
Website: www.branocsestates.co.uk

Phoenix House 5 New Street
Braintree
Essex
CM7 1ER

Branocs endeavour to maintain accurate depictions of properties in Virtual Tours, Floor Plans and descriptions, however, these are intended only as a guide and purchasers must satisfy themselves by personal inspection.

