

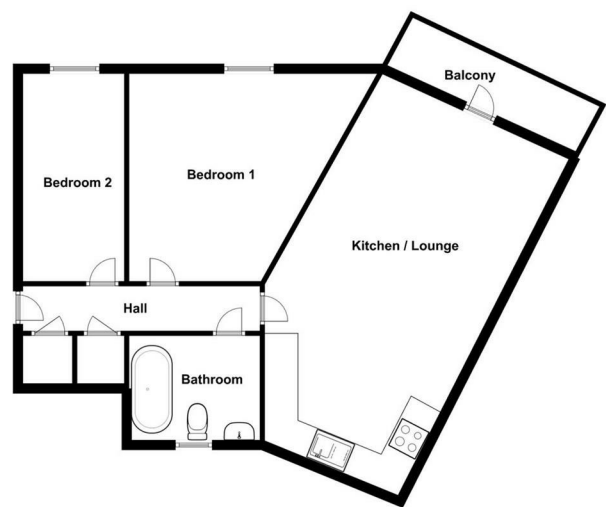


BOCKING WATERSIDE CHURCH STREET, BRAINTREE CM7

GUIDE PRICE £180,000

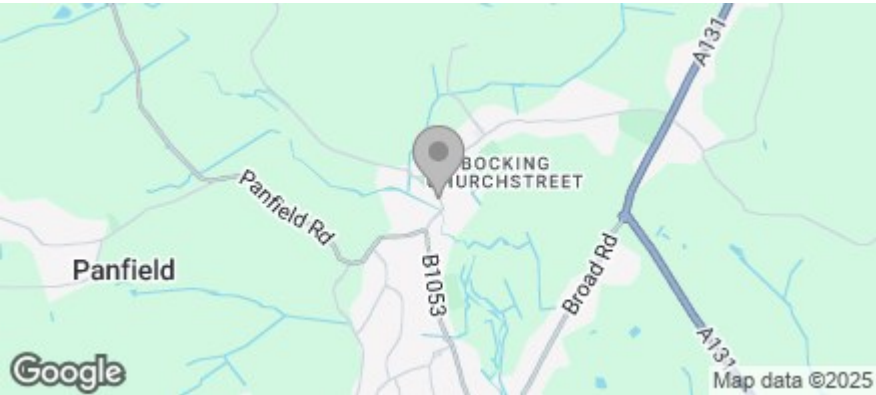
2 Bedrooms | 1 Bathrooms | 1 Receptions

Floor Plan



© Essex EPCs
This floor plan is not to scale and is for illustrative purposes only.
We make no guarantee, warranty or representation as to its accuracy and completeness.

Area Map



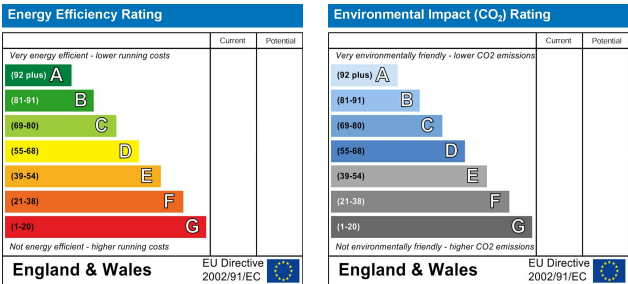
Accommodation

- TWO BEDROOM APARTMENT
- OPEN PLAN LIVING
- HIGH SPEC FINISH THROUGHOUT
- COMPLETED ONWARD CHAIN
- BALCONY OVERLOOKING RIVER
- SOUGHT AFTER LOCATION
- CLOSE TO LOCAL AMENITIES
- COMMUNAL GARDENS

Viewing

Please contact us on 01376 386555 if you wish to arrange a viewing appointment for this property, or require further information.

Energy Efficiency Graph



Phone: 01376 386555
Email: info@branocsestates.co.uk
Website: www.branocsestates.co.uk

Phoenix House 5 New Street
Braintree
Essex
CM7 1ER

Branocs endeavour to maintain accurate depictions of properties in Virtual Tours, Floor Plans and descriptions, however, these are intended only as a guide and purchasers must satisfy themselves by personal inspection.

