

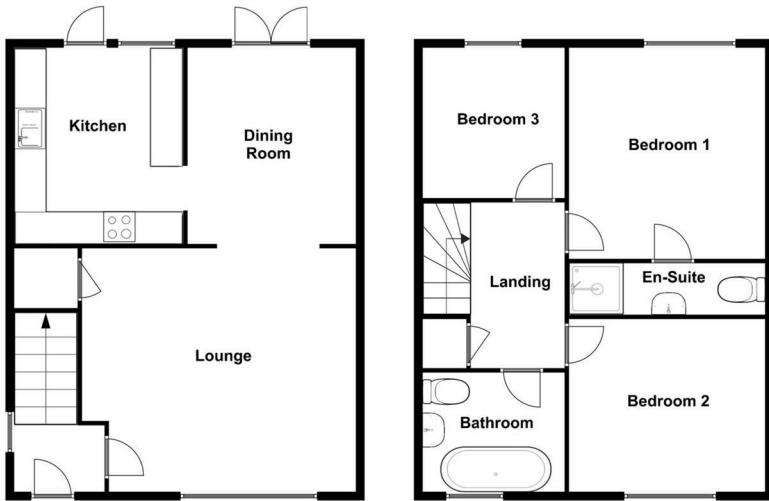
**BRANOC'S**  
ESTATES

**77 NASH DRIVE, BROOMFIELD CM1**

OFFERS IN EXCESS OF £425,000

3 Bedrooms | 2 Bathrooms | 2 Receptions

## Floor Plan



© Essex EPCs  
 This floor plan is not to scale and is for illustrative purposes only.  
 We make no guarantee, warranty or representation as to its accuracy and completeness.

## Area Map



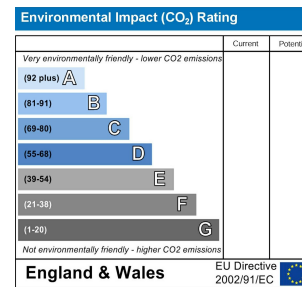
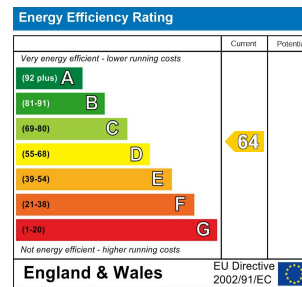
## Accommodation

- THREE BEDROOMS
- DETACHED GARAGE
- SOUTH FACING GARDEN
- HUGE POTENTIAL TO EXTEND
- CLOSE TO BROOMFIELD HOSPITAL AND MAJOR TRANSPORT ROUTES
- ENSUITE TO MASTER BEDROOM
- 5 MINUTES FROM CHELMSFORD CITY CENTRE
- CUL-DE-SAC LOCATION

## Viewing

Please contact us on 01376 386555 if you wish to arrange a viewing appointment for this property, or require further information.

## Energy Efficiency Graph



**Phone:** 01376 386555  
**Email:** info@branocsestates.co.uk  
**Website:** www.branocsestates.co.uk

Phoenix House 5 New Street  
 Braintree  
 Essex  
 CM7 1ER

Branocs endeavour to maintain accurate depictions of properties in Virtual Tours, Floor Plans and descriptions, however, these are intended only as a guide and purchasers must satisfy themselves by personal inspection.

