



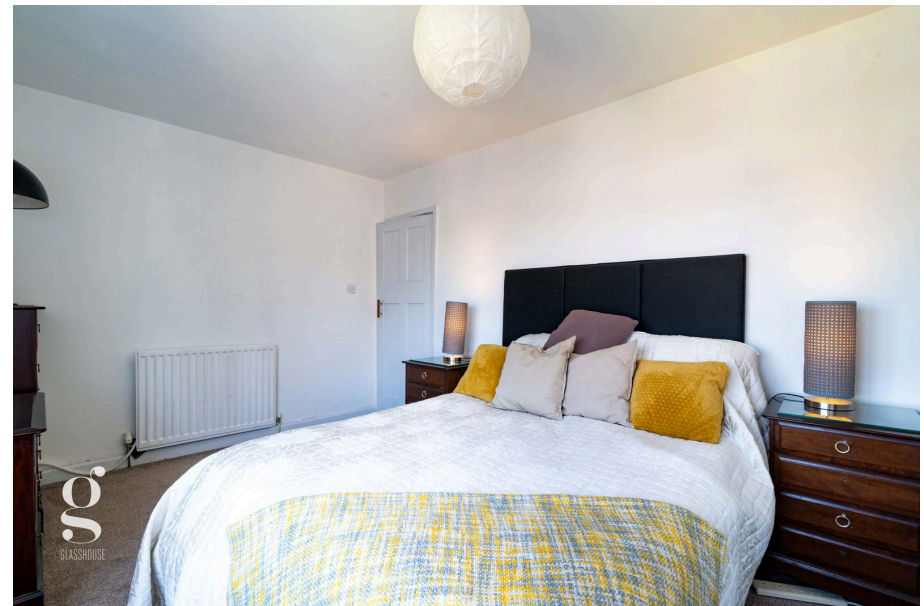
o

g
GLASSHOUSE

Symonds Street, Hereford, HR1 2HA

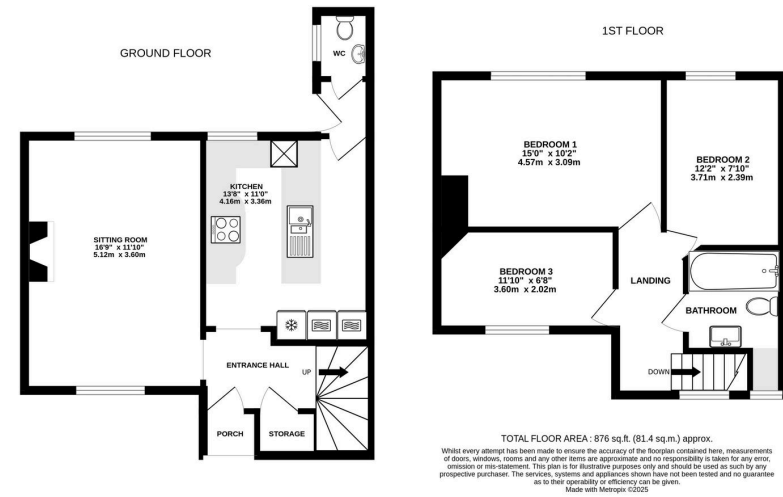
Guide Price £275,000

3 1 1



- Modern Kitchen
- Large Sitting Room
- Parking for Multiple Cars
- No Onward Chain





A Well-Proportioned 3 Bedroom Terraced House, offering spacious living accommodation and a generous rear garden and off-road parking for multiple vehicles near Hereford City Centre.

