



Newbury Court, Bobblestock, Hereford

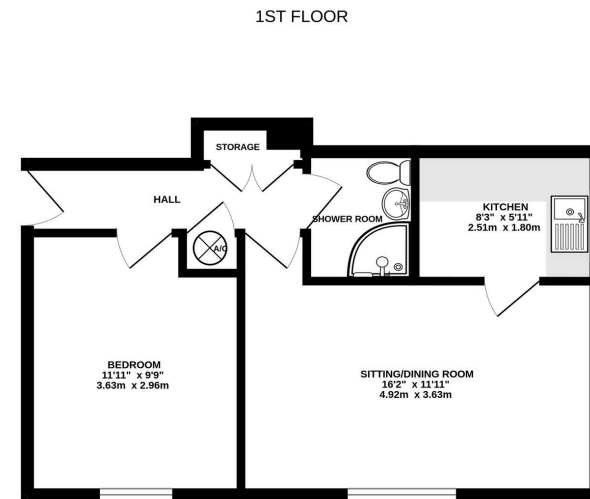
Guide Price £125,000

1 1 1



- No Onward Chain
- Ideal for First Time Buyers or Investors
- Off-Road Parking
- Close to Nearby Amenities





TOTAL FLOOR AREA: 405 sq.ft. (37.6 sq.m.) approx.
 While every effort has been made to ensure the accuracy of the floorplan contained herein, measurements of floors, walls, doors and any other items are approximate and no responsibility is taken for any error.
 This plan is for illustrative purposes only and should be used as a guide for any prospective purchaser. The services, systems and appliances shown have not been tested and no guarantee is given for their operation or efficiency (see the green).
 Made with Metreplan 12025

A Well Presented 1 Bedroom First Floor Flat, with a good-size reception room and double bedroom. Benefiting from double glazing and off-road parking, situated in Bobblestock, Hereford. Offered With No Onward Chain.

