





Eggleton Lane, Holmer, Hereford

Guide Price £310,000

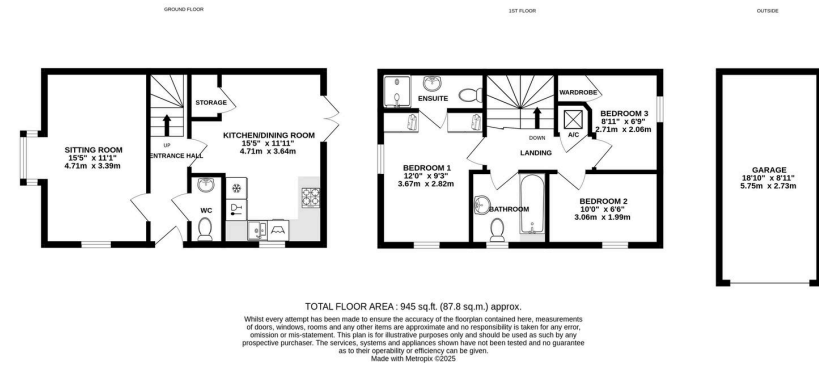
3 2 1





- 3 Bedrooms; Detached
- 2-Car Driveway & Garage
- Well Presented Throughout
- Great Travel Connections





A Modern 3 Bedroom Detached Home in Holmer, Hereford, located in the sought-after Furlongs development. Positioned in a desirable residential setting, the property enjoys close proximity to local amenities, excellent transport links, and open green spaces.

