



Your Logo

Ryeland Lane, Kingstone

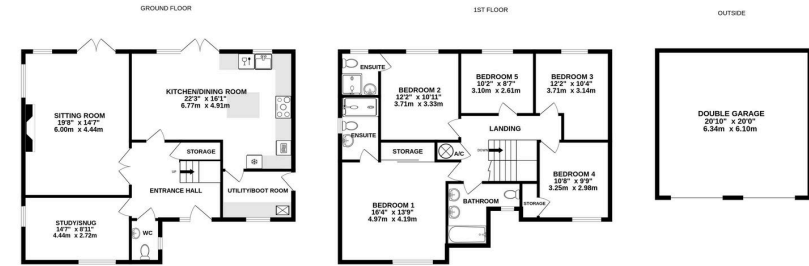
Guide Price £485,000

5 3 3



- Expansive Kitchen/Dining Room
- South-Facing Landscaped Garden
- 5 Double Bedrooms; Detached
- Double Garage & Large Driveway
- Tasteful High Quality Finish Throughout
- Envious Position Within Quiet Development





TOTAL FLOOR AREA : 2293 sq.ft. (213.0 sq.m.) approx.

Whilst every attempt has been made to ensure the accuracy of the floorplan contained here, measurements of doors, windows, rooms and any other items are approximate and no responsibility is taken for any error, omission or mis-statement. This plan is for illustrative purposes only and should be used as such by any prospective purchaser. The services, systems and appliances shown have not been tested and no guarantee as to their operability or efficiency can be given.

Made with Metriq 6/2025

A Spacious, Stylish 5 Double Bedroom Detached House, nestled in a quiet corner of a recent development in Kingstone, spectacularly upgraded throughout, with expansive kitchen/dining hub and stunning south-facing garden.

