



4 Bed Detached with 2 Bed Annexe – Kingsthorpe, Hereford

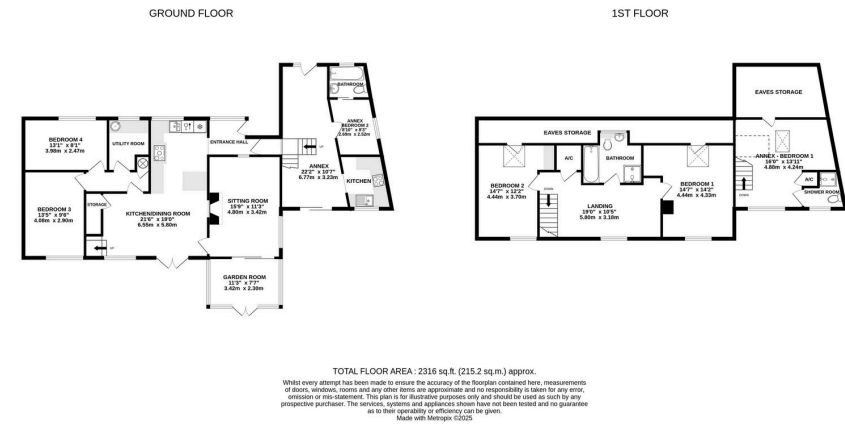
Guide Price £475,000

🛏 6 🚿 3 🛋 4



- 4 Double Bedrooms; Detached
- Large Private Gardens with Raised Decking
- Multiple Reception Rooms
- 2 Bed Attached Annexe with Private Garden & Entry
- Sweeping Tarmac Driveway
- Spacious Multi-Generational Family Home





A Spacious and Versatile 4 Bedroom Detached Home with an Attached 2 Bedroom Annexe, set in the tranquil village of Kingsthorpe, just south of Hereford. Offered With No Onward Chain.

