





# Tremlett Court, Holmer, Hereford

Guide Price £160,000

1 1 1





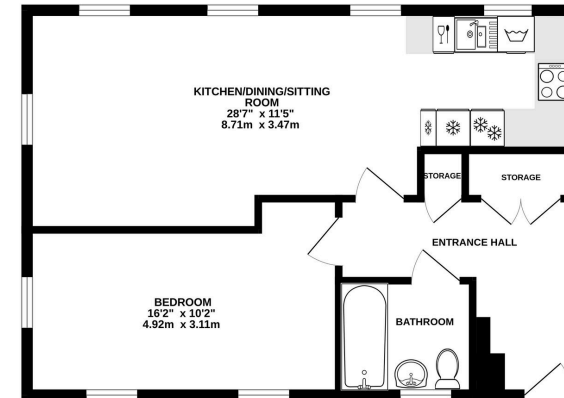
- Newly Installed Wren Kitchen • Designated Off-Road Parking
- Stylish Interior Decor Throughout
- Good Travel Connections Throughout





A Superbly Presented 1 Bedroom Apartment Situated in Tremlett Court, Holmer, Hereford. Boasting a modern open-plan layout, this property features a recently installed Wren kitchen, stylish interiors, and allocated parking.

1ST FLOOR



TOTAL FLOOR AREA: 566 sq ft (52.6 sq m.) approx.  
While every attempt has been made to ensure the accuracy of the floorplan contained here, measurements of rooms, kitchen, baths and any other items are approximate and the responsibility is taken for any error or omission of the floorplan. This plan is for illustrative purposes only and should be used as a guide only and not for any other purpose. The services, systems and appliances shown here are not to be used as a guarantee of any kind or for any other purpose. Made with Metaphor 02/25

