



# Church Pastures, Holmer, Hereford, HR1 1RE

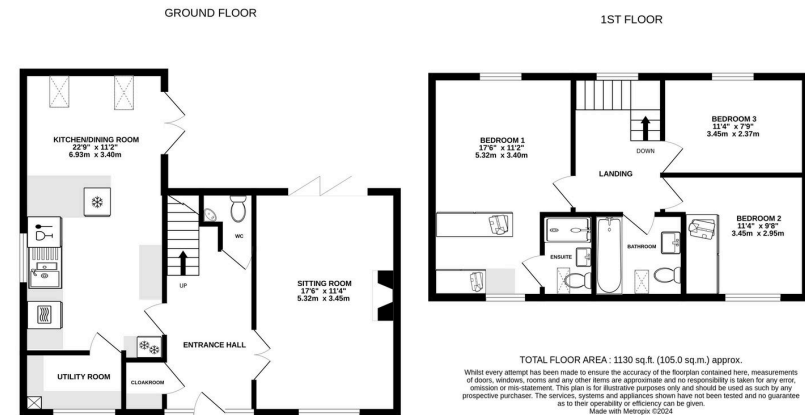
Guide Price £400,000

3 2 2



- Large Kitchen/Dining Room
- Parking for Multiple Cars
- Luxury Bedroom Suite
- EV Charging Point
- 3 Double Bedrooms
- Complete Onward Chain





A Stylish, Spacious & Executive 3 Bedroom Detached House, set on the edge of a recent development in Holmer, with great travel connections and City access, all offered with a complete Onward Chain.

