



Brook Farm Court, Belmont, Hereford

Guide Price £112,500

🛏 2 🪑 1 🚿 1

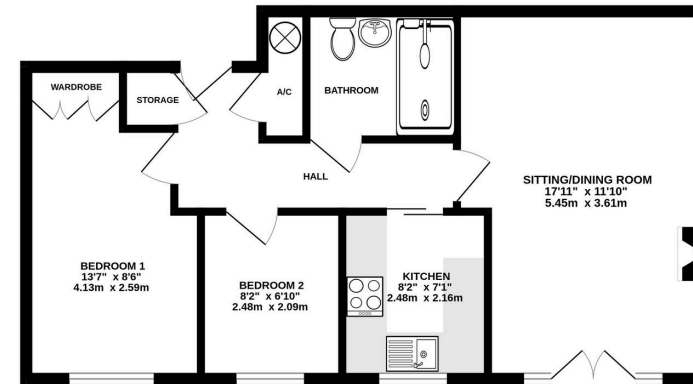


- 2 Bedroom First Floor Flat
- Available to Over 55's Only
- Very Close to Local Amenities
- Offered With No Onward Chain
- Communal Gardens
- Off-Road Parking





FIRST FLOOR



TOTAL FLOOR AREA: 553 sq ft (51.4 sq.m.) approx.
Whilst every attempt has been made to ensure the accuracy of the floorplan contained here, measurements of doors, windows, rooms and any other items are approximate and no responsibility is taken for any error, omission or mis-statement. This plan is for illustrative purposes only and should be used as such by any prospective purchaser. The services, systems and appliances shown have not been tested and no guarantee as to their operability or efficiency can be given.
 Made with Merge3D 2020

A Well Presented 2 Bedroom First Floor Flat, situated in a private residential enclave available to over 55's, all Offered With No Onward Chain.

