



# St. Peters Close, Moreton-On-Lugg

Guide Price £245,000

🛏️ 4 🚿 1 🚻 1



A Well Presented 4 Bedroom Terraced House, modernised throughout, including additional downstairs bedroom converted from original garage, all in the popular village of Moreton-On-Lugg near the outskirts of Hereford City.

**Kitchen – Sitting/Dining Room – Downstairs Bedroom – Utility Room/WC – 2 Upstairs Double Bedrooms – Single Bedroom – Family Bathroom – Rear Garden – 2 Sheds – Large Driveway**

This modern home offers 4 bedrooms, including a downstairs double bedroom converted from the original garage, spacious reception room backing onto the garden, modern kitchen & bathroom, 3 bedrooms upstairs and large front driveway.

### Location

Situated just 4 miles from the City of Hereford or 9 miles from Leominster, Moreton-on-Lugg is a popular village with a thriving sense of community. Opposite the property is the village park with football pitch and basketball court, as well as a wooded area. The village also offers a general store, post office and also has an award-winning fish & chip shop, whilst further afield in Hereford are a wide range of amenities.

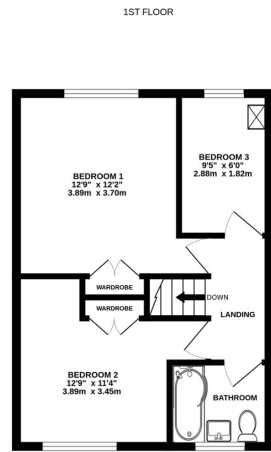
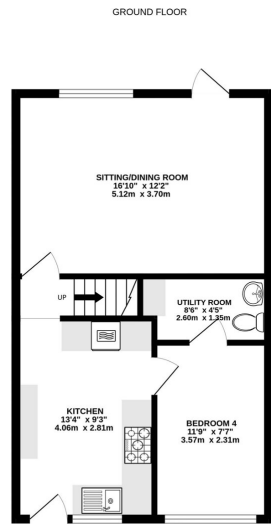
### The Property

**Kitchen:** A well-appointed kitchen, with cream cabinets and modern appliances. Includes a built-in oven, grill, gas hob, extractor fan and stainless-steel sink with drainer. The kitchen also includes space for a dishwasher and fridge-freezer. The neutral tones and tiled floor offer a clean and practical space.

**Sitting/Dining Room:** A sizeable carpeted reception room, with fully glazed external door and wide window overlooking the garden and filling the room with light. Includes wallpaper feature wall and ample space for a dining table and furniture suite.

**Downstairs Bedroom:** Converted from the original garage, with fitted





TOTAL FLOOR AREA: 869 sq ft. (80.7 sq.m.) approx.  
While every effort has been made to ensure the accuracy of the figures contained here, measurements of floor, window, doors and any other items are approximate and no responsibility is taken for any errors, omissions or mis-statements. This plan is for guidance purposes only and should be used as such by any prospective purchaser. The services, systems and appliances shown have not been tested and no guarantee as to their operation or efficiency can be given.  
 Made with Metreps 12/24

- 4 Bedrooms, including Garage Conversion
- Large Driveway
- Great Travel Connections
- Secure Garden with 2 Sheds
- Popular Herefordshire Village
- Modern Kitchen & Bathroom

