



Stoke Lacy, Bromyard

Guide Price £585,000

🛏️ 3 🚿 2 🛋️ 3



A Gorgeous 18th Century 3 Double Bedroom Red Brick Farmhouse, with immaculately presented extensive lawned gardens, driveway and garage, all set in the peaceful village of Stoke Lacy, near Bromyard.

Entrance Hall – Sitting Room – Large Kitchen/Dining/Family Room – Utility Room with Storage – Downstairs Shower Room – Study/Library – Storage – First Floor Landing – 3 Double Bedrooms – Family Bathroom – Airing Cupboard – Extensive Lawned Gardens – Pond – Garage – Driveway

This stunning detached period property is set within a wealth of beautifully kept private gardens, while the house itself offers approx. 1,600 sq. ft of inside space, including a massive kitchen/diner with woodburner, formal sitting room and separate study, 3 double bedrooms and family bathroom, which has been updated with modern fixtures.

Location

Nestled in the picturesque countryside near Bromyard, the charming village of Stoke Lacy offers a serene escape with a strong sense of community. Boasting scenic landscapes, it is perfect for nature enthusiasts and walkers. The village is home to the historic St Peter & St Paul Church and the renowned Wye Valley Brewery. With easy access to the A44, Stoke Lacy provides convenient travel connections to nearby towns and cities, making it an ideal location for those seeking a peaceful rural lifestyle with excellent commuting options.

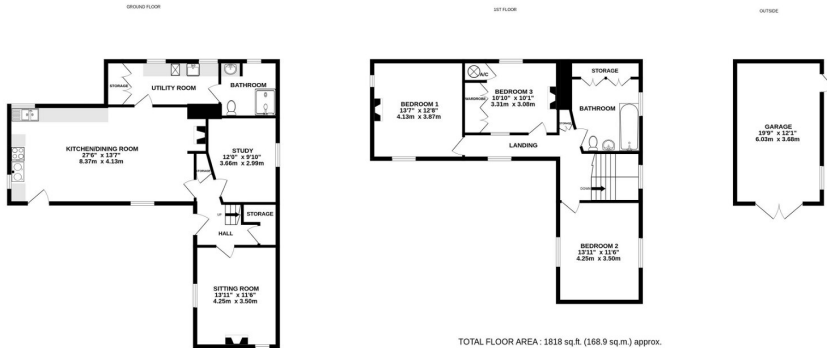
The Property

Entrance Hall: An original over-sized wooden door opens into the tiled hall, which includes two useful storage closets.

Sitting Room: A cosy carpeted lounge, with dual aspect sash windows bringing light to the space. Features a woodburning stove with wooden surround.



- Stunning 18th Century Farmhouse
- Beautiful Extensive Lawned Gardens
- Surrounded by Rural Herefordshire Countryside
- 3 Double Bedrooms; Detached
- Idyllic Peaceful Village Setting
- Approx. 0.3 Acre Plot



TOTAL FLOOR AREA: 1818 sq.ft. (168.9 sq.m.) approx.
Whilst every attempt has been made to ensure the accuracy of the floorplan contained here, measurements of floors, windows, doors and any other items are approximate and no responsibility is taken for any error, omission or mis-statement. This plan is for illustrative purposes only and should be used as such by any prospective purchaser. The services, systems and appliances shown have not been tested and no guarantee as to their operability or efficiency can be given. Made with Metrepro ©2024

