



Allensmore, Hereford
Guide Price £450,000

🛏 3 🚗 1 🛋 2



A Charming & Characterful Country Cottage with Detached Outbuildings, offering 3 double bedrooms and potential for expansion, all set in approx. an acre of well-maintained gardens in the parish of Allensmore, near Hereford.

Entry Porch – Kitchen – Dining Room – Cloakroom – Utility Room – Downstairs WC – Snug – Sitting Room – 3 Double Bedrooms – Family Bathroom – Detached Outbuilding/Games Room – Storage Sheds – Double Garage – Gardens & Grounds Extending to Approx. 1 Acre – Large Driveway

Allensmore is a picturesque village in Herefordshire and offers a serene rural lifestyle with easy access to the amenities of Hereford. The village is well-known for its beautiful landscapes and community spirit. Hereford, with its extensive range of shops, supermarkets, public houses, doctors' surgeries, post office, theatres, dental practices, and schools, is just a short drive away. The Cathedral City of Hereford is 3 miles away, providing further conveniences and mainline train stations.

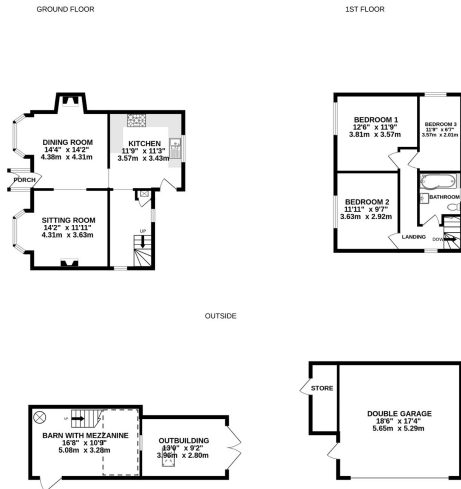
The Property

Kitchen – A good-size room with a range of white shaker cupboard units above and below granite effect countertops. Includes large range oven and extractor fan hood above, with additional space for a fridge/freezer and dishwasher.

Dining Room – Tiled flooring continues from the kitchen into the adjoining dining room, featuring a wood-burning stove, adding a cosy ambiance to the room. Offers generous space for a large dining table, perfect for special occasions. A glazed door leads into a small porch top the front aspect of the cottage.

Sitting Room – The main living room is both cosy and welcoming, featuring a charming fireplace with a quarry tile hearth that serves as the focal point of the room. The space is fully carpeted, enhancing the warmth and comfort. Exposed wooden beams add a rustic touch, while a large picture window offers lovely views of the front gardens, allowing natural light to fill the room and complete the aesthetic.





TOTAL FLOOR AREA: 1644 sq.ft. (152.7 sq.m.) approx.

Whilst every attempt has been made to ensure the accuracy of the floorplan contained here, measurements of doors, windows, rooms and any other items are approximate and no responsibility is taken for any error, omission or mis-statement. This plan is for illustrative purposes only and should be used as such by any prospective purchaser. The services, systems and appliances shown have not been tested and no guarantee as to their operability or efficiency can be given.
Made with Metropix ©2024.

- Approx. an Acre of Gardens & Grounds
- Detached Barn, Sheds & Double Garage
- Characterful Detached Cottage
- Surrounded by Countryside
- 3 Double Bedrooms
- Modern Kitchen & Bathroom

