





# Mantella Drive, Tupsley, Hereford

Guide Price £465,000

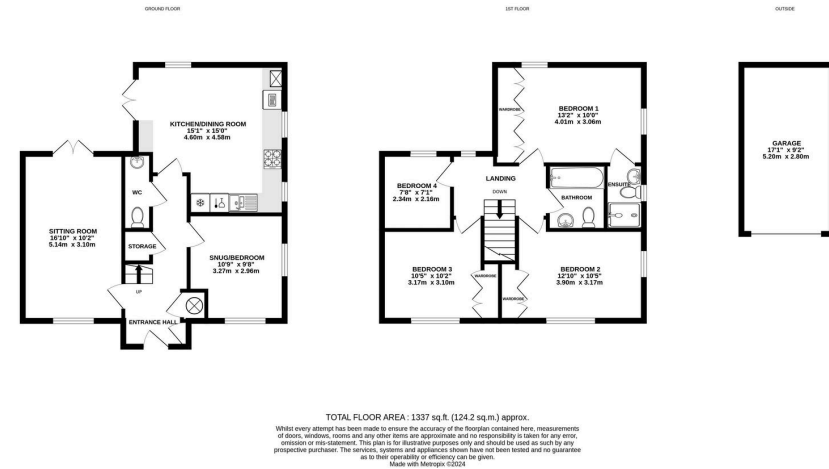
🛏 4 🚿 2 🚗 3





- Spacious Living on Both Floors
- 4/5 Bedrooms; Detached
- Beautiful Private Gardens
- No Onward Chain
- Detached Garage & Driveway
- Nearby Access to Walking Routes with Views





A Spacious Detached 4/5 Bedroom Contemporary House, built in 2018 in the sought-after area of Tupsley, Hereford.

