





Commercial Street, Hereford, HR1 2EH

Guide Price £70,000

1 1 1



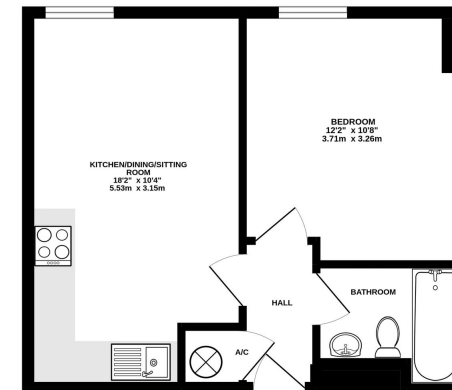
- Converted Apartment in City Centre
- Triple Glazed Windows + Secondary Glazing
- Open Plan Kitchen/Reception Room
- Offered With No Onward Chain







FIRST FLOOR



TOTAL FLOOR AREA: 375 sq.ft. (34.8 sq.m.) approx.  
 All measurements are approximate and should not be relied upon for any purpose. The actual area may vary slightly from the measurements shown. The measurements are given for information only and do not constitute a guarantee. The measurements are given for information only and do not constitute a guarantee. The measurements are given for information only and do not constitute a guarantee.

Being Sold via Secure Sale online bidding. Terms & Conditions apply. Starting Bid £70,000

