



Ranelagh Street, Whitecross, Hereford

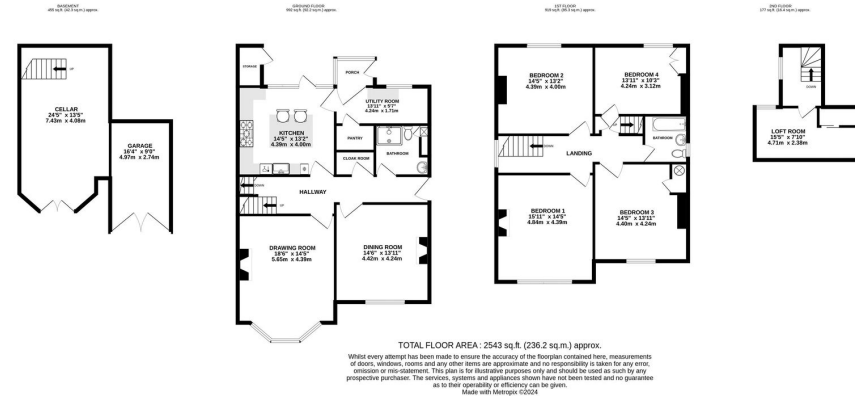
Guide Price £650,000

5 2 2



- Private Walled Garden
- 4 Double Bedrooms; Detached
- Stunning Victorian Family Home
- Bursting With Period Character
- Off-Road Parking in Secure Garage
- Desirable Location





A Gorgeous Victorian Detached 4 Double Bedroom Family Home, with a captivating kitchen opening into private walled garden and with unexpected garage, all quietly set on a no-through road in the heart of popular Whitecross.

