



Frome Court, Bartestree, Hereford, HR1 4DX

From £250,000

🛏️ 3 🪑 2 🚗 2



A Spacious 3 Double Bedroom House, set within the architectural delights of a converted Victorian Grade II Listed Gothic Revival Convent. Offered With No Onward Chain.

Entrance Hall – Sitting Room – Kitchen/Breakfast Room – Under-Stairs Boiler Closet – Landing With Storage – Bedroom 1 With Dressing Area & Ensuite – 2 Further Double Bedrooms – Family Bathroom – Communal Landscaped Gardens & Central Courtyard – Designated Off-Road Parking

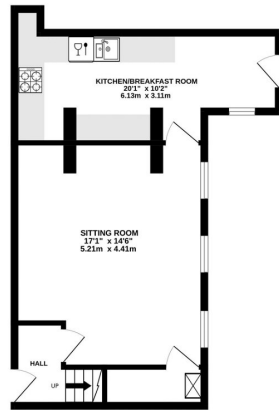
The property benefits throughout from elegantly grand proportions, with generous room sizes and high ceilings. Frome Court is nestled to the edge of the popular village of Bartestree offering local convenience store, pub, hairdresser, chip shop and vibrant village hall. Enjoying a quietly rural location it lies less than 4 miles from the full amenities of Hereford City or 10 miles from the delightful black & white market town of Ledbury.

The Property

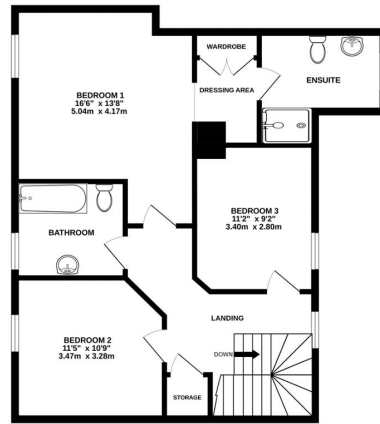
This historic convent building has been thoughtfully converted into separate dwellings, with shared access from the halls to the property, which is bursting with character and enjoys lovely views across the central courtyard with statue.



GROUND FLOOR



1ST FLOOR



TOTAL FLOOR AREA: 1160 sq ft (107.8 sq.m.) approx.

Whilst every attempt has been made to ensure the accuracy of the floorplan contained here, measurements of doors, windows, rooms and any other items are approximate and no responsibility is taken for any error, omission or mis-statement. This plan is for illustrative purposes only and should be used as such by any prospective purchaser. The services, systems and appliances shown have not been tested and no guarantee as to their operability or efficiency can be given.
Made with Merge 10/2021

- 3 Double Bedrooms; 2 Bathrooms
- Period Character
- Landscaped Communal Garden
- Highly Sought-After Village Location
- Designated Off-Road Parking
- Offered With No Onward Chain

