

*To arrange a viewing contact us
today on 01268 777400*



Cornsland Close, Upminster Offers in excess of £400,000

Located within a secure gated estate set in approximately six acres of beautifully maintained grounds, this modern first-floor two-bedroom apartment offers stylish living in a peaceful and well-kept environment.

The flat is presented in excellent decorative order and features a bright and spacious living area, a modern fitted kitchen, and two well-proportioned bedrooms. The contemporary bathroom completes the accommodation, making this an ideal purchase for first-time buyers, professionals, or downsizers.

Further benefits include a long lease, allocated parking, and the security and privacy of a gated development. The extensive communal grounds provide a rare sense of space and tranquillity, while still offering convenient access to local amenities and transport links.

Entrance Hall

Main Bathroom

Lounge

20 x 12'11 (6.10m x 3.94m)

Kitchen

11'08 x 6'10 (3.56m x 2.08m)

Master Bedroom

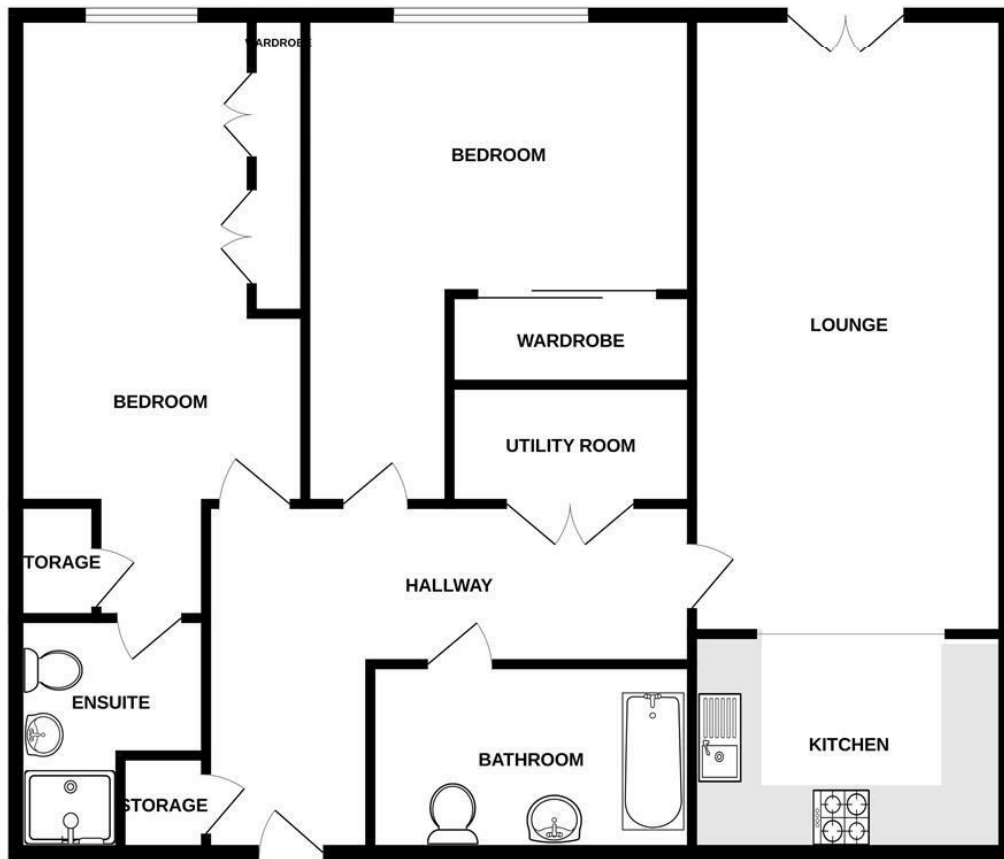
17'10 x 11'01 (5.44m x 3.38m)

En-suite

Bedroom Two

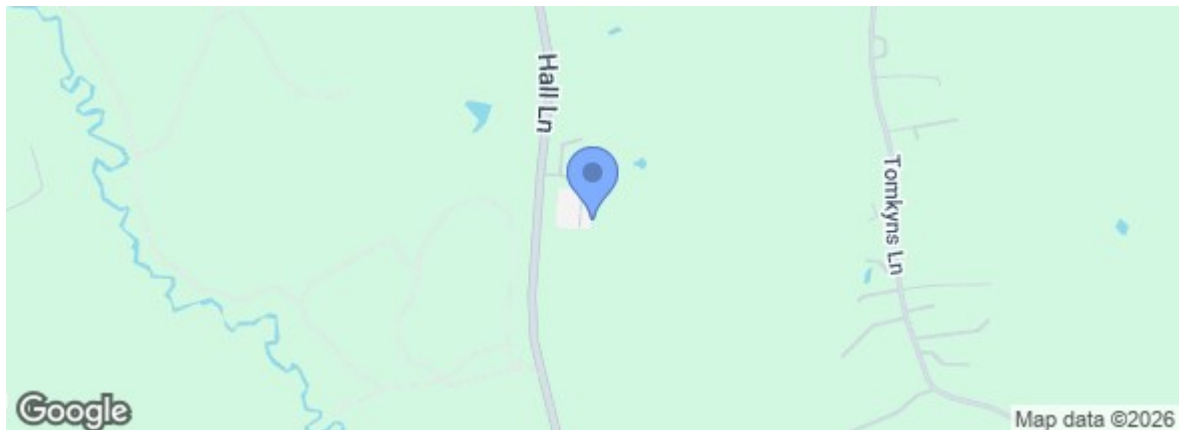
15'05 x 8'10 (4.70m x 2.69m)

GROUND FLOOR



Whilst every attempt has been made to ensure the accuracy of the floorplan contained here, measurements of doors, windows, rooms and any other items are approximate and no responsibility is taken for any error, omission or mis-statement. This plan is for illustrative purposes only and should be used as such by any prospective purchaser. The services, systems and appliances shown have not been tested and no guarantee as to their operability or efficiency can be given.
Made with Metropix C2026

Energy Efficiency Rating		Current	Potential
Very energy efficient - lower running costs			
(92 plus) A			85
(81-91) B			
(69-80) C		71	
(55-68) D			
(39-54) E			
(21-38) F			
(1-20) G			
Not energy efficient - higher running costs			
England & Wales		EU Directive 2002/91/EC	
Environmental Impact (CO ₂) Rating		Current	Potential
Very environmentally friendly - lower CO ₂ emissions			
(92 plus) A			
(81-91) B			
(69-80) C			
(55-68) D			
(39-54) E			
(21-38) F			
(1-20) G			
Not environmentally friendly - higher CO ₂ emissions			
England & Wales		EU Directive 2002/91/EC	



 **rightmove.co.uk**
The UK's number one property website

Zoopla.co.uk

Under the Property Misdescriptions Act 1991 we make every effort to ensure our sales details are accurate but they are a general outline and do not constitute any part of an offer or contract. Any services, equipment and fittings have not been tested and no warranty can be given as to their condition. We strongly recommend that all the information provided be verified by your advisors and in particular, measurements required for a specific purpose such as fitted furniture or carpets. Please tell us if you have any problems and members of our branches will help either over the phone or in person. A copy of our complaints procedure is available on request. The details are issued on the strict understanding that any negotiations in respect of the property named herein are conducted through Aspire Estate Agents.