

**To arrange a viewing contact us  
today on 01268 777400**



ASPIRE

ASPIRE  
ESTATE AGENTS



## Charlotte Gardens, Romford, Havering, Guide price £425,000

Aspire Estate Agents are delighted to present this impressive three-bedroom end-of-terrace home, positioned on a generous corner plot within the highly sought-after Charlotte Gardens, Romford.

Occupying a fantastic-sized plot, this home offers exceptional internal space along with multi-vehicle off-street parking. Ideal for growing families or buyers needing room to spread out.

Upon entering, you're welcomed by a spacious front porch and entrance hall, leading to a modern fitted kitchen complete with integrated appliances. A convenient downstairs WC is also located just off the hallway.

To the rear of the property is a superbly sized open-plan lounge and dining room. Bright and airy, it provides direct access to the walled rear garden which has been landscaped with low-maintenance artificial lawn — perfect for entertaining or relaxing.

Upstairs, the property offers three genuine double bedrooms. The principal bedroom features built-in wardrobes, while bedroom two also benefits from excellent built-in storage. The third bedroom is a generous double, ideal as a guest room or home office.

The family shower room is a real standout — beautifully presented with a high-end finish, offering both style and practicality.

To the front of the property is a large private driveway with ample space for multiple vehicles. The corner position not only gives the property a sense of privacy but also opens the door to potential for extension (subject to planning permission).

[www.aspireestateagents.co.uk](http://www.aspireestateagents.co.uk)

**Front Porch**

8'1" x 4'7" (2.470 x 1.419)

**Hallway**

12'1" x 3'10" (3.704 x 1.181)

**W/C**

4'11" x 3'9" (1.507 x 1.163)

**Kitchen**

8'6" x 8'6" (2.614 x 2.613)

**Living Room/Diner**

17'6" x 17'6" (5.359 x 5.351)

**Landing**

12'1" x 5'4" (3.699 x 1.642)

**Bedroom 1**

12'8" x 8'10" (3.863 x 2.713)

**Bedroom 2**

11'6" x 11'0" (3.529 x 3.375)

**Bedroom 3**

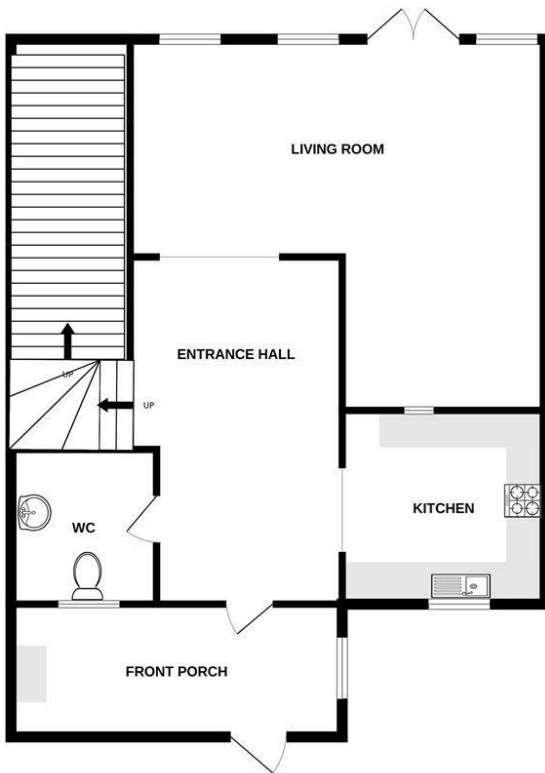
8'3" x 8'0" (2.537 x 2.458)

**Bathroom**

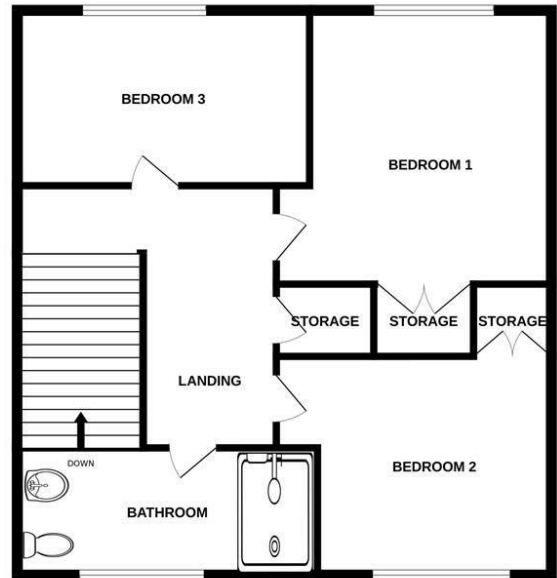
8'2" x 5'0" (2.491 x 1.542)

**Garden**

GROUND FLOOR  
996 sq.ft. (92.5 sq.m.) approx.

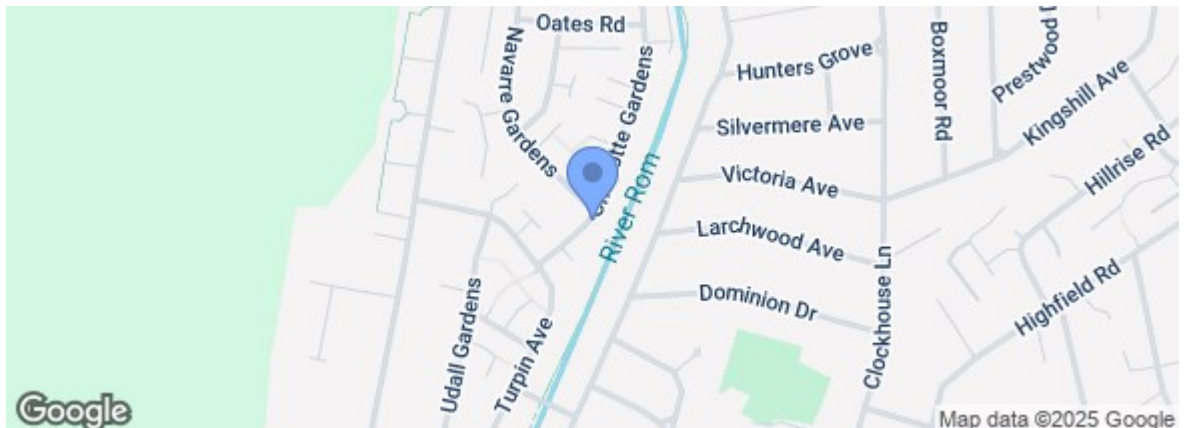
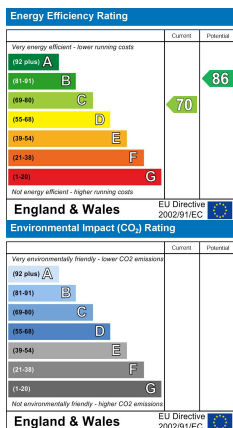


1ST FLOOR  
869 sq.ft. (80.8 sq.m.) approx.



TOTAL FLOOR AREA : 1866 sq.ft. (173.3 sq.m.) approx.

Whilst every attempt has been made to ensure the accuracy of the floorplan contained here, measurements of doors, windows, rooms and any other items are approximate and no responsibility is taken for any error, omission or mis-statement. This plan is for illustrative purposes only and should be used as such by any prospective purchaser. The services, systems and appliances shown have not been tested and no guarantee as to their operability or efficiency can be given.  
Made with Metropix ©2025



rightmove.co.uk  
The UK's number one property website

Zoopla.co.uk

Under the Property Misdescriptions Act 1991 we make every effort to ensure our sales details are accurate but they are a general outline and do not constitute any part of an offer or contract. Any services, equipment and fittings have not been tested and no warranty can be given as to their condition. We strongly recommend that all the information provided be verified by your advisors and in particular, measurements required for a specific purpose such as fitted furniture or carpets. Please tell us if you have any problems and members of our branches will help either over the phone or in person. A copy of our complaints procedure is available on request. The details are issued on the strict understanding that any negotiations in respect of the property named herein are conducted through Aspire Estate Agents.