

*To arrange a viewing contact us
today on 01268 777400*



Crown Avenue, Pitsea Guide price £290,000

Aspire is proud to present this charming semi-detached bungalow, featuring a beautifully light-filled conservatory that fills the home with warmth and natural light. In addition to two generously sized double bedrooms, the property offers a versatile space that can be used as a home study or a single bedroom. With spacious living areas, a modern kitchen, and a cozy garden, this home is perfect for both relaxation and entertaining. Located in a peaceful neighbourhood, it combines comfort and convenience for tranquil living.
Guide £290,000 to £300,000

Kitchen

11'5" x 11'5" (3.50 x 3.50)

Lounge

11'0" x 15'0" (3.37 x 4.59)

Conservatory

6'7" 12'4" (2.03 3.76)

Bedroom

10'0" x 11'2" (3.05 x 3.42)

Bedroom

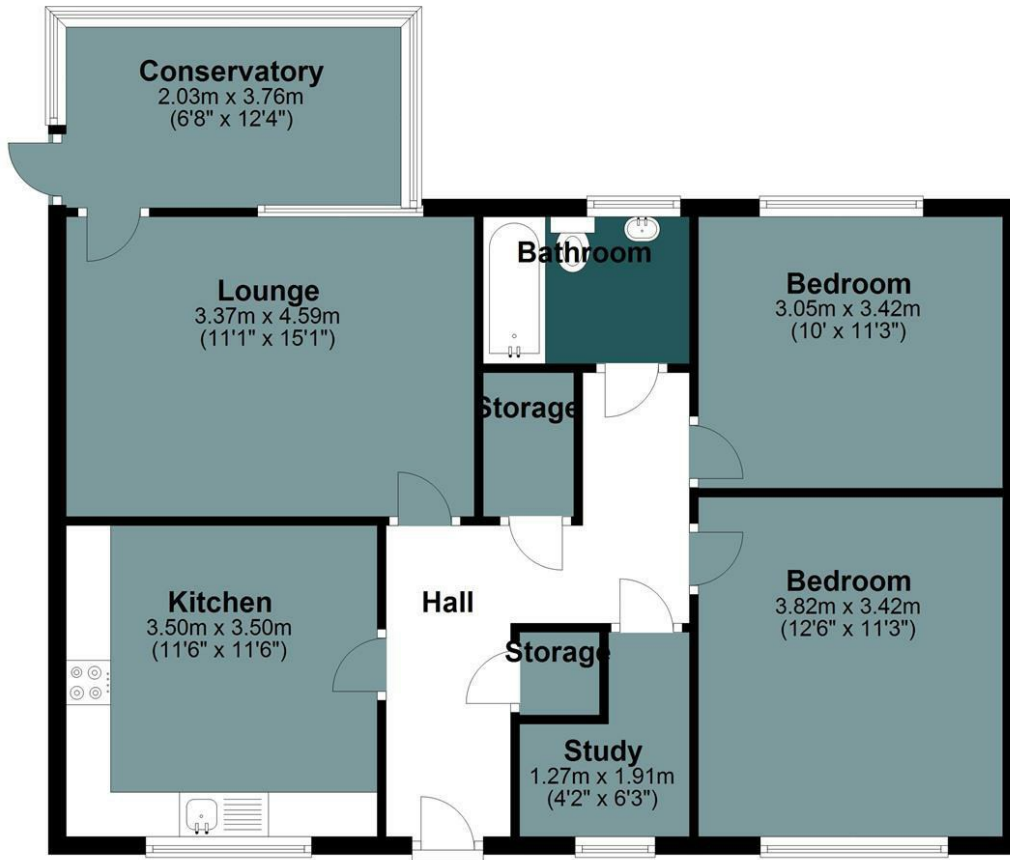
12'6" x 11'2" (3.82 x 3.42)

Study / Single Bed

4'1" x 6'3" (1.27 x 1.91)

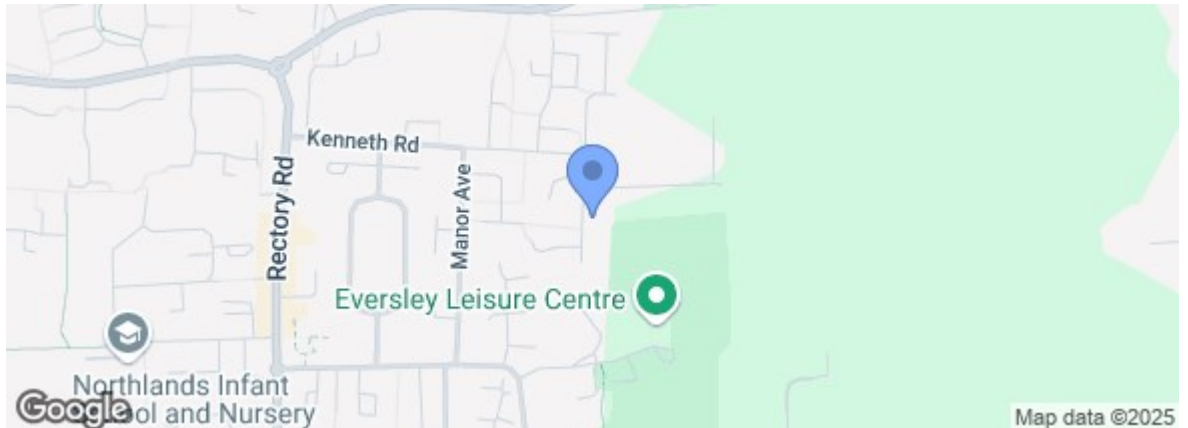
Ground Floor

Approx. 76.8 sq. metres (826.5 sq. feet)



Total area: approx. 76.8 sq. metres (826.5 sq. feet)

Energy Efficiency Rating		Current	Potential
Very energy efficient - lower running costs			
(92 plus) A			
(81-91) B			
(69-80) C			
(55-68) D			
(39-54) E			
(21-38) F			
(1-20) G			
Not energy efficient - higher running costs			
England & Wales			
EU Directive 2002/91/EC			
Environmental Impact (CO ₂) Rating		Current	Potential
Very environmentally friendly - lower CO ₂ emissions			
(92 plus) A			
(81-91) B			
(69-80) C			
(55-68) D			
(39-54) E			
(21-38) F			
(1-20) G			
Not environmentally friendly - higher CO ₂ emissions			
England & Wales			
EU Directive 2002/91/EC			



Under the Property Misdescriptions Act 1991 we make every effort to ensure our sales details are accurate but they are a general outline and do not constitute any part of an offer or contract. Any services, equipment and fittings have not been tested and no warranty can be given as to their condition. We strongly recommend that all the information provided be verified by your advisors and in particular, measurements required for a specific purpose such as fitted furniture or carpets. Please tell us if you have any problems and members of our branches will help either over the phone or in person. A copy of our complaints procedure is available on request. The details are issued on the strict understanding that any negotiations in respect of the property named herein are conducted through Aspire Estate Agents.