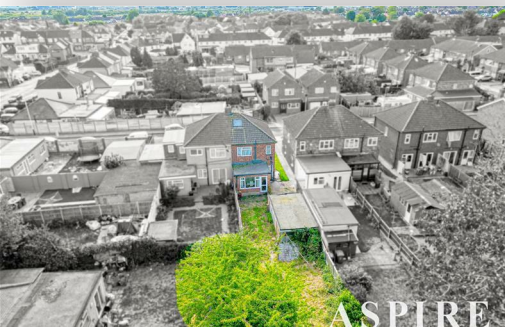


**To arrange a viewing contact us
today on 01268 777400**



ASPIRE



ASPIRE



ASPIRE



ASPIRE

Deri Avenue, Rainham Offers in the region of £425,000

Aspire are pleased to introduce this charming four-bedroom semi-detached home, perfect for families seeking both space and opportunity. With approximately 100ft garden, the property offers significant potential for outdoor living, extensions, or future enhancements. Ideally located with excellent transport links into London and top-rated local schools nearby, brimming with possibilities for personalization and expansion, making it a perfect choice for growing families.

PORCH

DOWNSTAIRS W/C

Skimmed ceiling with over head lighting front facing UPVC double glazed obscured window wallpapered walls, mirror, sink, W/C Radiator and Tiled flooring.

ENTRANCE HALL

12 x 5 (3.66m x 1.52m)

Skimmed ceiling with over head lighting, side aspect UPVC obscured window, Radiator, wood affect flooring. stairs to first floor and rooms leading to lounge and kitchen.

LOUNGE

18 x 9 (5.49m x 2.74m)

Skimmed ceiling with over head lighting, front facing UPVC Double Glazed windows, radiators and wood effect flooring.

KITCHEN

10 x 6 (3.05m x 1.83m)

Over head lighting with UPVC Windows to the side and rear, kitchen compromises of counter tops to the left and right, gas oven, a range of lower and upper storage cupboards, half tiled walls and tiled flooring. room leading to dining room.

DINING AREA

9 x 12 (2.74m x 3.66m)

Skimmed ceiling with over head lighting, Rear UPVC double glazed window and side obscured window, radiator and wood affect flooring, rooms leading to kitchen and lounge. door to the garden.

BEDROOM ONE

13 x 8 (3.96m x 2.44m)

Skimmed ceiling with over head lighting, Front aspect bay window, floor to ceiling fitted wardrobes, radiator and carpeted flooring.

BEDROOM TWO

11 x 9 (3.35m x 2.74m)

Skimmed ceiling with over head lighting, rear facing UPVC double glazed window, radiator, storage cupboard, carpeted flooring.

BEDROOM THREE

8 x 5 (2.44m x 1.52m)

Skimmed ceiling with over head lighting, front aspect UPVC double glazed window, radiator and carpeted flooring.

BEDROOM FOUR

10x11 (3.05mx3.35m)

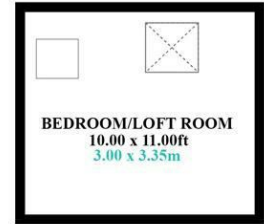
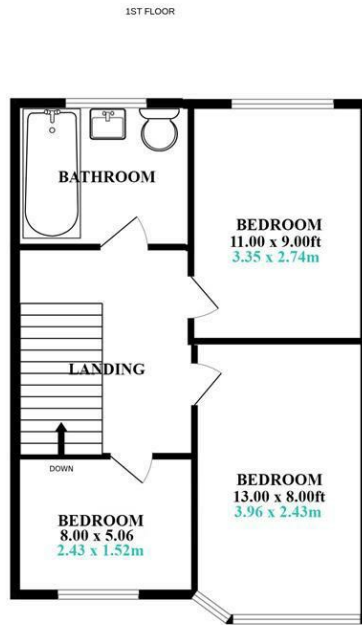
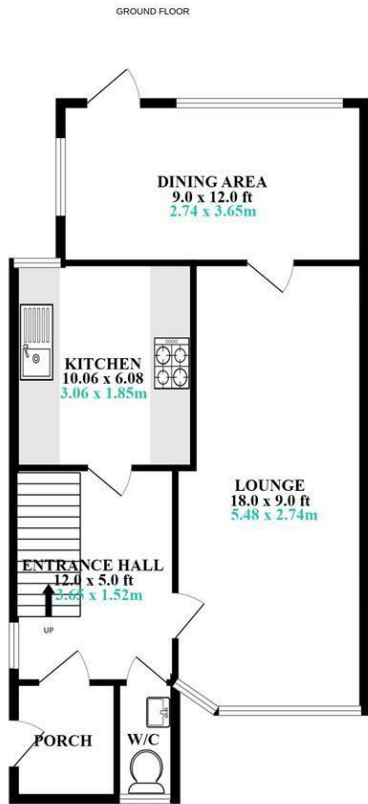
Skimmed ceiling with over head lighting, Loft room with ceiling window, Radiator and carpeted flooring.

BATHROOM

Skimmed ceiling with over head lighting, tiled walls, Storage mirror, sink, bath and shower, w/c, tiled flooring.

GARDEN

Approximately 100ft garden which is north east facing, detached garage.



ASPIRE

ESTATE AGENTS

DERI AVENUE RAINHAM

🏠 x4 🚗 x2

Whilst every attempt has been made to ensure the accuracy of the floorplan contained here, measurements of doors, windows, rooms and any other items are approximate and no responsibility is taken for any error, omission or mis-statement. This plan is for illustrative purposes only and should be used as such by any prospective purchaser. The services, systems and appliances shown have not been tested and no guarantee as to their operability or efficiency can be given.
Made with Metropix ©2024

Energy Efficiency Rating		Current	Potential
Very energy efficient - lower running costs			
(92 plus)	A		
(81-91)	B		
(69-80)	C		
(55-68)	D		
(39-54)	E	39	
(21-38)	F		
(1-20)	G		
Not energy efficient - higher running costs			
England & Wales EU Directive 2002/91/EC			
Environmental Impact (CO ₂) Rating		Current	Potential
Very environmentally friendly - lower CO ₂ emissions			
(92 plus)	A		
(81-91)	B		
(69-80)	C		
(55-68)	D		
(39-54)	E		
(21-38)	F		
(1-20)	G		
Not environmentally friendly - higher CO ₂ emissions			
England & Wales EU Directive 2002/91/EC			



Under the Property Misdescriptions Act 1991 we make every effort to ensure our sales details are accurate but they are a general outline and do not constitute any part of an offer or contract. Any services, equipment and fittings have not been tested and no warranty can be given as to their condition. We strongly recommend that all the information provided be verified by your advisors and in particular, measurements required for a specific purpose such as fitted furniture or carpets. Please tell us if you have any problems and members of our branches will help either over the phone or in person. A copy of our complaints procedure is available on request. The details are issued on the strict understanding that any negotiations in respect of the property named herein are conducted through Aspire Estate Agents.