

To arrange a viewing contact us
today on 01268 777400



Manor Road, Tilbury Offers invited £375,000

Aspire Estate Agents are delighted to announce the recent installation of a Modern Gloss Kitchen, boasting sleek, contemporary cabinetry and high-quality finishes. The property now also features newly installed double-glazed windows, offering superior insulation and energy efficiency.

The highlight of this property is its expansive garden, which includes beautifully landscaped areas with shrubs, a tranquil pond, and a stylish deck perfect for outdoor dining and relaxation.

Located in a desirable neighborhood, this property offers easy access to local amenities, schools, and transport links, ensuring convenience for daily commuting and family activities.

www.aspireestateagents.co.uk

Entrance Hallway

Lounge

14'3 x 12'9 (4.34m x 3.89m)

Kitchen

16'10 x 8'2 (5.13m x 2.49m)

Dinning Room

12'4 x 7'7 (3.76m x 2.31m)

Utility Room

Downstairs Bedroom

12'4 x 9'5 (3.76m x 2.87m)

Landing

Bathroom

7'3 x 6'2 (2.21m x 1.88m)

Master Bedroom

15'1 x 10'8 (4.60m x 3.25m)

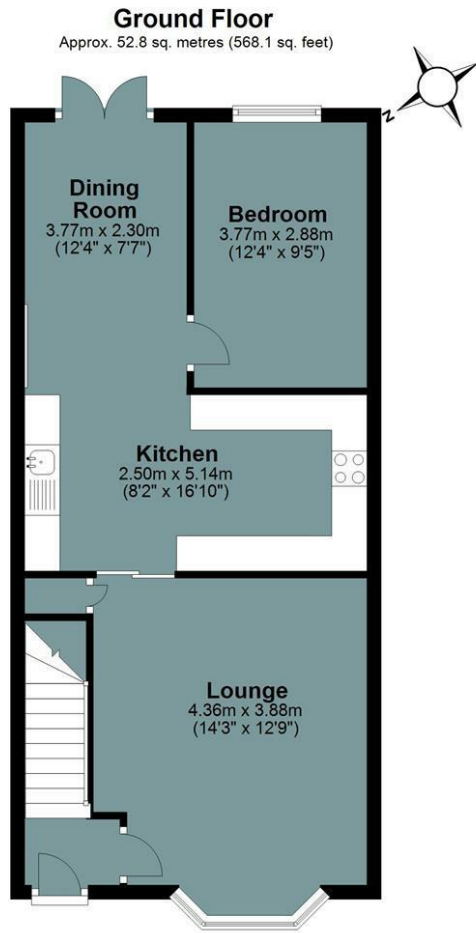
Second Bedroom

10'11 x 10'9 (3.33m x 3.28m)

Rear Garden

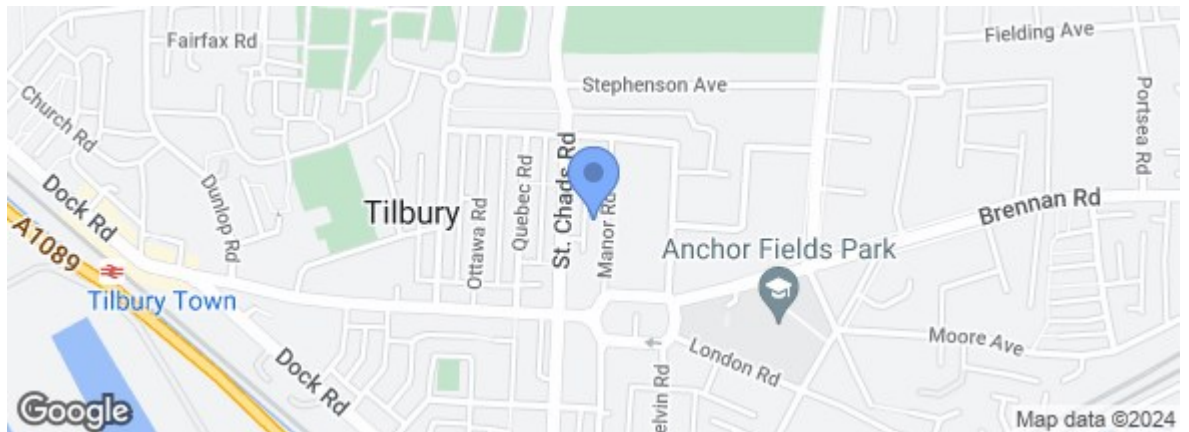
160 (48.77m)

Front Parking



Total area: approx. 88.2 sq. metres (949.9 sq. feet)
Manor Road

Energy Efficiency Rating		Current	Potential
Very energy efficient - lower running costs			
(92 plus)	A		
(81-91)	B		
(69-80)	C		
(55-68)	D		
(39-54)	E		
(21-38)	F		
(1-20)	G		
Not energy efficient - higher running costs			
England & Wales EU Directive 2002/91/EC			
Environmental Impact (CO ₂) Rating		Current	Potential
Very environmentally friendly - lower CO ₂ emissions			
(92 plus)	A		
(81-91)	B		
(69-80)	C		
(55-68)	D		
(39-54)	E		
(21-38)	F		
(1-20)	G		
Not environmentally friendly - higher CO ₂ emissions			
England & Wales EU Directive 2002/91/EC			



Under the Property Misdescriptions Act 1991 we make every effort to ensure our sales details are accurate but they are a general outline and do not constitute any part of an offer or contract. Any services, equipment and fittings have not been tested and no warranty can be given as to their condition. We strongly recommend that all the information provided be verified by your advisors and in particular, measurements required for a specific purpose such as fitted furniture or carpets. Please tell us if you have any problems and members of our branches will help either over the phone or in person. A copy of our complaints procedure is available on request. The details are issued on the strict understanding that any negotiations in respect of the property named herein are conducted through Aspire Estate Agents.