

To arrange a viewing contact us
today on 01268 777400



Ditton Court Road, Westcliff-On-Sea Offers invited £325,000

Aspire Estate Agents proudly present this charming ground floor maisonette boasting three bedrooms and a host of desirable features, private rear garden, fitted kitchen, and bathroom with separate W.C. Situated mere moments from Westcliff On Sea Station and the bustling Hamlet Court Road Shopping district, replete with its myriad of bars and restaurants, this spacious property offers easy access to the seafront. With the added benefit of being offered with No Onward Chain, this property warrants an internal viewing. Contact our Sales Team today to arrange a viewing.

HALLWAY

With access to the accommodation.

LOUNGE - 17'7" (5.36m) Max x 13'6" (4.11m)

KITCHEN - 12'4" (3.76m) x 7'4" (2.24m)

MASTER BEDROOM - 13'8" (4.17m) x 10'1" (3.07m)

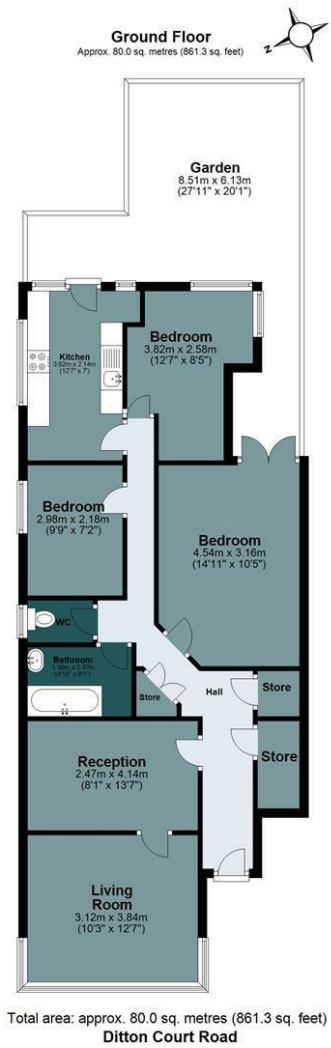
BEDROOM TWO - 13'6" (4.11m) Max x 8'8" (2.64m)

BATHROOM

SEPERATE W.C

BEDROOM THREE - 9'7" (2.92m) x 7'1" (2.16m)

REAR GARDEN



Energy Efficiency Rating		Current	Potential
Very energy efficient - lower running costs			
(92 plus)	A	69	
(81-91)	B		
(69-80)	C		
(55-68)	D		
(39-54)	E		
(21-38)	F		
(1-20)	G		
Not energy efficient - higher running costs			
England & Wales		EU Directive 2002/91/EC	
Environmental Impact (CO ₂) Rating		Current	Potential
Very environmentally friendly - lower CO ₂ emissions			
(92 plus)	A		
(81-91)	B		
(69-80)	C		
(55-68)	D		
(39-54)	E		
(21-38)	F		
(1-20)	G		
Not environmentally friendly - higher CO ₂ emissions			
England & Wales		EU Directive 2002/91/EC	



Under the Property Misdescriptions Act 1991 we make every effort to ensure our sales details are accurate but they are a general outline and do not constitute any part of an offer or contract. Any services, equipment and fittings have not been tested and no warranty can be given as to their condition. We strongly recommend that all the information provided be verified by your advisors and in particular, measurements required for a specific purpose such as fitted furniture or carpets. Please tell us if you have any problems and members of our branches will help either over the phone or in person. A copy of our complaints procedure is available on request. The details are issued on the strict understanding that any negotiations in respect of the property named herein are conducted through Aspire Estate Agents.